

# For Farm Women . . .

(Continued from page eight)

One tablespoon paprika  
 Three tablespoons flour  
 One-cup dairy sour cream  
 One cup water  
 One teaspoon grated lemon rind  
 One tablespoon lemon juice.  
 Coat chicken with flour, salt and pepper. Brown slightly in hot fat. Add onion, water and paprika. Cover tightly and simmer until chicken is fork-tender, 20 to 25 minutes. Remove chicken and prepare gravy. Add flour to pan juices and blend. Cook until bubbly. Add sour cream and water and simmer, stirring constantly until uniformly thickened. Cover and simmer about five minutes. Add lemon juice and rind. Heat chicken in the gravy.

## Peas, Picked and Packed



Packed in iced barrels, these hulled peas are on their way by truck to the cannery from Lancaster County. Pea picking is at its height at the moment. Producers consider this a good pea crop, with yields up to two tons per acre. (Lancaster Farming Staff Photo).

## Farm Women 3 Schedule Picnic At Brickerville

Society of Farm Women 3 met Saturday at the home of Mrs. Grace Weidman, Arkron. The meeting was in charge of Mrs. Harold E. Stuber, president. Reports of the recent visit to the County Home were given by Mrs. Harry Usner. A treat of ice cream and pretzel stick was given each guest. Society No. 4 assisted with the project.

Mrs. Lloyd Martin gave a report on the Ephrata Hospital Auxiliary Fete where Society 1 and 3 conducted a Market Booth. Mystery sisters were revealed, and new ones assigned for the coming year.

Book reviews on some Book Club books were given by Mrs. Harold Fry and Mrs. Irvin Burkholder.

The next meeting will be July 22 at the Brickerville Church grove as a family picnic.

Refreshments were served and a social hour followed.

### HEAR

The Mennonite Hour  
 Each Sunday

Lancaster WLAN 12:30 P. M.  
 Norristown WNAR 8:00 A. M.  
 Hanover WHVR 1:00 P. M.

## New & Rebuilt CLEANERS

We Service All Makes of Vacuum Cleaners

RODGERS VACUUM CLEANER SERVICE

Ph. 7-5776 21 E. Vine St. Lanc.  
 Closed Mondays

Make A Point To Visit Our

Animal Health Department

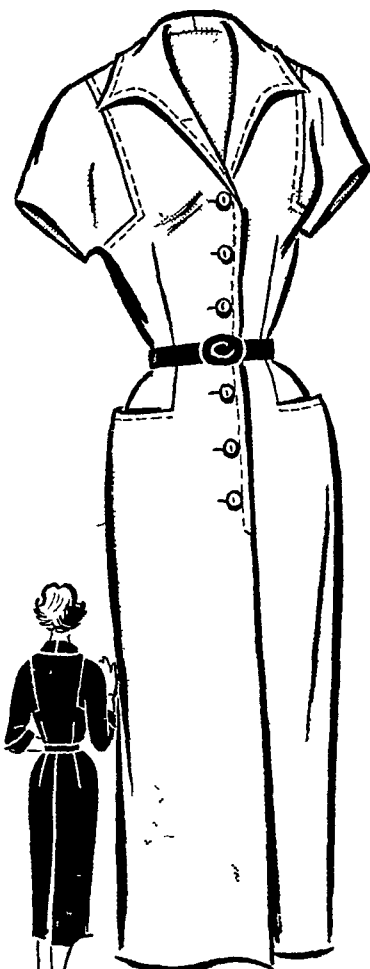
THE QUARRYVILLE DRUG CO.

QUARRYVILLE, PA.  
 PHONE 100

There is debate of all kinds on seasoning, flouring, flavoring chicken. There is a school that says for chicken, "Paprika? Absolutely not." Others swear it adds much. Then the recipe above calls for a touch of citrus fruit and juice, another item of flavoring that has caused no end of contention. Likely chicken itself provides too delicate a flavor to warrant use of fruit, an idea that is more applicable to veal and ham.

That's it until next weekend when we'll see you again.

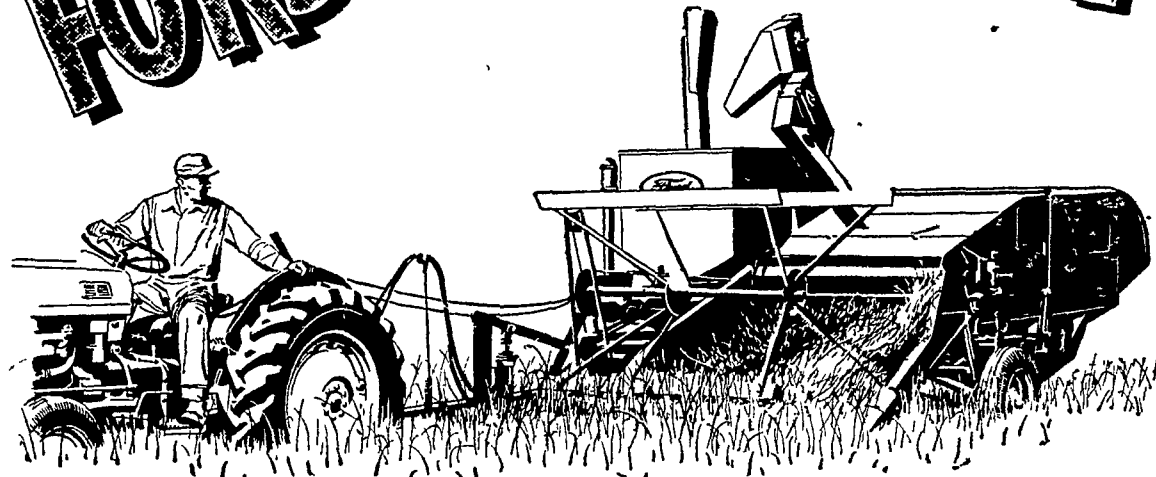
### Today's Pattern



9189 SIZES 12-20, 40  
 by Marian Martin

Pattern 9189—Misses' Sizes 12, 14, 16, 18, 20, 40. Size 16 takes 4 yards 35-inch fabric.  
 Send Thirty-five cents in coins for this pattern—add 5 cents for each pattern if you wish 1st class mailing. Send to 170 Newspaper Pattern Dept., 232 West 18th St., New York 11, N. Y. Print plainly NAME, ADDRESS with ZONE, SIZE and STYLE NUMBER.

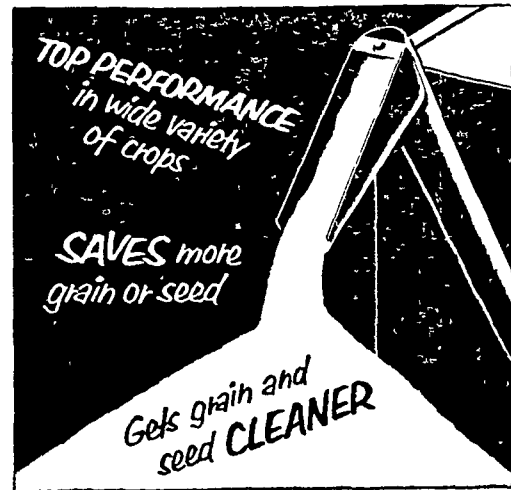
# It's the NEW FORD 6-foot COMBINE



for a money-making harvest

There are dozens of features in the new Ford Combine which make us say, "you've never seen a combine to match it." And the best way to find out all that's new and better about this combine is to come in and check it over.

Right away, you'll notice many crop-saving advantages. The sickle, for example, will cut within 1½ inches of the ground to get more of the "down" grain. Or, it can be raised as high as 3 feet for faster work in sorghums or other tall crops. You can adjust cylinder speed by the twist of a knob, and one handy lever controls the volume of wind. Rubber elevator paddles reduce grain cracking. It's the only combine in its class with the walker type straw rack . . . a real grain saver. There are up to 26% fewer points to lubricate, and the Ford Combine is as much as 14 inches narrower than other 6-foot combines for easier passage through gates.



There's much more—we've just touched on a few of the high spots. So come in and find out more!

See the FORD COMBINE NOW . . . easy terms available



SAUDER BROS.

HAVERSTICK BROS.

NEW HOLLAND

Ph. 4-8721

Columbia Pike

Lancaster Ph. 2-5722

CONESTOGA FARM SERVICE

ELIZABETHTOWN FARMERS SUPPLY INC.

Quarryville Ph. 282

Ph. 7-1341

**Sawette**  
 America's most revolutionary chain saw cuts trees, or any growth up to 6" in diameter, level with terrain, while operator is in upright position. Speedy, efficient, rugged, the Sawette is the answer to heavy growth clearing problems.

**Cuts**  
 WEEDS, GRASS, REEDS  
 4 TIMES FASTER THAN ORDINARY METHODS

NEW POWER & NEW ENGINEERING  
 New equipped with double lever, double fuel capacity. Trims weeds on rocky or uneven ground. Cuts grass or weeds close to buildings. Clips reeds or underwater growth. Cuts with ease wherever a man can walk, wade, or row a boat. Equipped with 3 h.p. motor, 1-gal. capacity gas tank, 20-inch oscillating cutter bar. Weighs only 26 lbs.

Twist of the wrist and the SCYTHETTE becomes the Sawette

PRODUCT OF HOFFCO INC. RICHMOND, INDIANA

MAST Saw and Knife Service  
 605 Marietta Ave.  
 Lancaster Ph. 24291