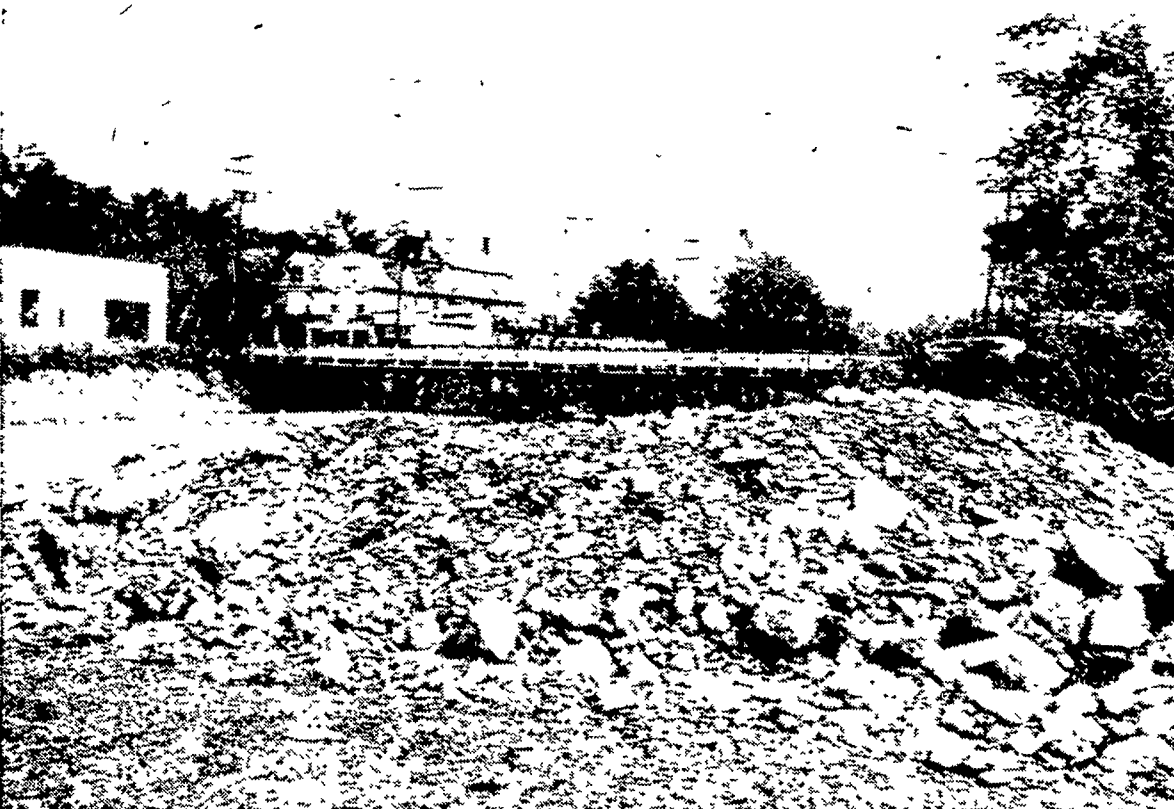




Wending its course toward the Delaware River and the Delaware Water Gap in Stroudsburg, this stream today appears most inviting for summer vacationers. This is one that last summer overflowed in the August flood. (Lancaster Farming Staff Photo).

Back In Business



Debris and rubble plus the temporary bridge prove effects of the August flood in Stroudsburg, where traffic and trade are returning to a normal basis in the beautiful Pocono Mountains. (Lancaster Farming Staff Photo).

A patch on your coat and money in your pocket is better and more creditable than a writ on your back and no money to take it off—Benjamin Franklin.

General Motors' sales reached almost twelve and a half billion dollars last year, a record. Net income passed the billion-dollar mark for the first time in the corporation's history.

June as Dairy Month Faces Big Schedule

HARRISBURG — Capitol Hill became Pennsylvania's "Dairyland" today with the start of June Dairy Month.

Governor George M. Leader attended the opening of a milk bar, in the rotunda of the main Capitol Building and later received "Miss Pennsylvania Milkmaid of 1956" in his office.

"Drink more milk" was the slogan advocated by Governor Leader for the month of June, along with the increased consumption of ice cream, butter, cheese and other dairy products when milk production is at its peak.

The Governor drank milk with Miss Susan Gail Coskery, Centre Valley, Lehigh County farm girl, winner of the State Milkmaid Queen title over nearly 100 entries in a statewide contest.

At the milk bar he drank milk with Miss Martha McDonald, Shippensburg RD 3, a Penn State University co-ed. She was Pennsylvania Apple Blossom Queen in 1955, and sails for Israel on June 12 as an international exchange student. Governor Leader left last Monday for Israel where a forest is to be dedicated to him. They talked of their pending visits while studying a map of Israel. Miss McDonald will spend six months in Israel, living on farms to learn customs if the people.

Rules on 1956 Crop Soil Bank Participation

WASHINGTON — (USDA) — Secretary of Agriculture Ezra Taft Benson today announced the national average rates which will be used in determining payments which can be earned by corn, cotton, wheat, and rice farmers who participate in the 1956 crop Soil Bank program, after entering into agreements with their local county Agricultural Stabilization and Conservation (ASC) Committees.

Rates for peanuts and tobacco will be announced later.

Under the Acreage Reserve part of the program, farmers in areas where crops are not too far advanced will be able to earn payments in connection with their 1956 crops of corn, wheat, cotton (both upland and extra long staple), peanuts, rice, and most types of tobacco. They can qualify for the payments by putting land into the Acreage Reserve, and thus reducing their acreage of the crop below the established allotment (or base acreage in the case of corn) for the farm.

"The rates and conditions we are announcing today apply to 1956 production only," said Secretary Benson in discussing the announcement. "It is so late in the season that we are moving with all possible speed to make the Soil Bank available for those farmers who can participate this year, in line with the expressed intent of Congress. In a sense, we are going to the field with a special program designed to meet the time emergency. Before next year's crops are planted, including fall seeding of grain this year, we will have an opportunity to review and study all provisions in more detail. Such changes as are found to be desirable will be made and announced before the 1957 Soil Bank is under way."

**Cautions Farmers**

"I should like to caution farmers on one point. No producer should go ahead with action to participate in the Soil Bank until he has checked with his local county ASC committee, and entered into an agreement with the committee regarding the practices he is to carry out. The lack of time to get more complete information into farm areas makes this especially important. We will get instructions to the county committees as rapidly as possible."

The payments which farmers

Landisville Guernsey Herd in Type Tests

Harry S. Mumma, Landisville, has recently had his Guernsey herd classified for type by L. O. Colebank, official classifier for the American Guernsey Cattle Club.

A complete analysis of the herd shows that of his 27 cows classified, four were rated Very Good, 13 Desirable and eight Acceptable.

Thirteen daughters of R. F.'s Melody Master were classified. Two rated Very Good, five Desirable and five Acceptable.

Four daughters of Llan Fair Resolute Kin were classified. Three rated Desirable and one Acceptable.

can earn for participating in the Acreage Reserve will be determined by multiplying a base unit "rate" by a yield factor to be determined.

The national average rates for 1956 crops of corn, cotton, wheat and rice are as follows:

- Corn — 90 cents per bu.
- Cotton — 15 cents per lb.
- Wheat — \$1.20 per bu.
- Rice — \$2.25 per cwt.

Regulations are being completed for the Conservation Reserve but are not ready for release. The Acreage Reserve for 1956 crops obviously must take precedence. Farmers who participate in the Conservation Reserve part of the Soil Bank program can earn two types of payment. The first will be a payment to cover a major part of the cost, including labor, of establishing a conservation practice. The second will be an annual payment during the period of the individual Conservation Reserve agreement. The annual Conservation Reserve payments will average out nationally at about ten dollars an acre.

SEE OUR LINE OF

- ★ Garden Tractors
- ★ Moto Mower Power Mowers
- ★ Ortho Products For the Farm and Garden

Martin's Hardware

Farm and Home Supplies  
Bareville  
Ph. Leola 6-3171

EXCAVATING

Donald C. Walter

TRENCHING — BACKFILLING  
LOADING AND GRADING

Willow Street R1, Ph. Lanc. 3-1187

LANDIS STONE MEAL CO.

Consult Us For The Best

WHITE LILLY ALL PURPOSE MINERALS

Agricultural Ground Limestone — Hard Poultry Grits  
Feed Mixing Calcium — Calcium — Stable Grits —

Lime Spreading Service  
RHEEMS, PA.

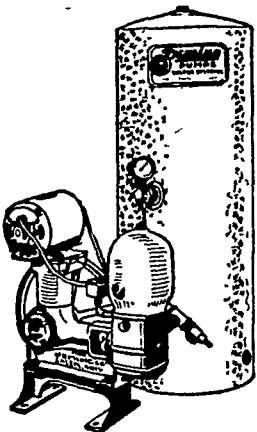
Call Elizabethtown 7-2901 — Night Calls 7-2906

PUMPS

FOR EVERY  
FARM HOME

AND

INDUSTRIAL NEED



HERR THE PUMP MAN

211 N. Ann St. Lancaster, Pa. Ph. 3-3694

O&D Shavings

... for clean, dry houses, excellent fertilizer, and real savings for you ...

Phone: MANHEIM

5-2305

Prompt Delivery Service!

A Ton of SHAVINGS goes twice as far ...

O & D Sawdust Co.

109 North Main Street

MANHEIM, PA.