

## For Farm Women . . .

(Continued from page six)

One-half cup hot water  
One cup granulated sugar  
One-fourth teaspoon salt  
Two egg whites  
One cup thawed strawberries and juice  
One tablespoon lemon juice  
One-half cup whipped cream  
Crush strawberries with juice; add sugar and let stand one-half hour. Pour cold water in mixing bowl and sprinkle gelatin on top of water. Add salt and hot water and stir until dissolved. Add berries and lemon juice. Cool, and when it begins

## Farm Women 23 Honor Mothers; Slides Shown

Twenty-one mothers and 20 members of the Society of Farm Women 23 were entertained at 6 p. m. Thursday of last week at a Mother and Daughter banquet in the home of Mrs. John H. Herr, Jr., 139 Kready Ave., Millersville. Mrs. Herr was hostess. Devotions were in charge of Mrs. Enos Newcomer, R6, Lancaster. Roll call was answered by "An experience your mother remembers about you." Mr. and Mrs. Milton Eberly showed slides of their recent trip to South America. Each mother received a plant as a token of love from the group.

Make A Point To Visit Our

Animal Health Department

THE QUARRYVILLE DRUG CO.

QUARRYVILLE, PA. PHONE 100

**Cuts**  
WEEDS, GRASS, REEDS  
NOW EQUIPPED WITH DIESEL POWER, DOUBLE FUEL CAPACITY, TRIMS WEEDS, ON ROCKY OR SLOPED GROUND. Cuts grass or weeds close to buildings. Cuts reeds or underwater growth. Cuts with ease wherever a man can walk, weed, or row a boat. Equipped with 2 h. p. motor, 1-gal. capacity gas tank, 20-inch oscillating cutter bar. Weighs only 26 lbs.

**Sawette**  
America's most revolutionary chain saw cuts trees, or any growth up to 4" in diameter, level with terrain while operator is in upright position. Speedy, efficient, rugged, the Sawette is the answer to heavy growth clearing problems.

PRODUCT OF HOFFCO INC. RICHMOND, INDIANA

**MAST Saw and Knife Service**  
605 Marietta Ave.

Lancaster Ph. 24291

## Corn Soup Supper Takes 600 Chickens

Six hundred chickens will be required for the Lititz Fire Company's chicken corn soup supper tomorrow night during the county convention. Members of the Ladies' Auxiliary cleaned chickens Tuesday and Wednesday for the event. Business sessions of the 35th annual convention will be in the Lititz Springs Park. A parade at 2 p. m. is scheduled, with prizes based on historical aspects of fire fighting equipment.

to thicken, beat until fluffy in whipped cream and beaten egg whites. Put in baked pie shell and chill. Garnish with cream and berries.

### CORRECTION

It sometimes happens, and it did happen. We left the butter out of a recent recipe, and our reader, Lena Brubaker of R1 Quarryville is not sure whether it was her fault or ours. She writes, "I must have omitted the butter in the recipe for sugar cookies. I'm sorry but it should have included a cup of butter." To correct this, we'll reprint the entire recipe, correct, this time, we hope:

### SUGAR COOKIES

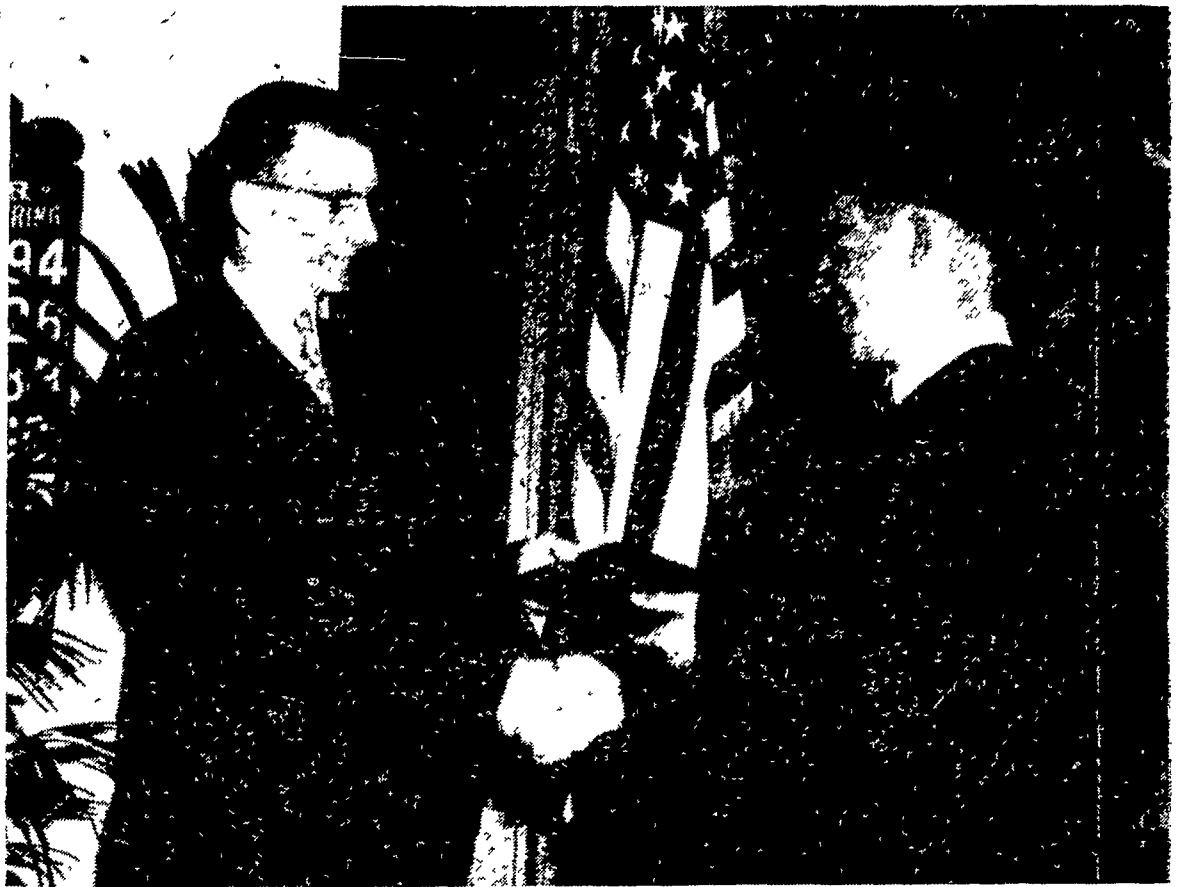
Three eggs  
Two cups white sugar  
One cup butter  
One cup sour cream  
One teaspoon soda  
One-half teaspoon salt  
One teaspoon vanilla  
About five cups (all purpose) flour, enough to make soft dough.  
Cream butter, sugar and un-beaten eggs in a big bowl, then stir in the sour cream and vanilla. Sift dry ingredients and add them to bowl. Stir all until thoroughly and smoothly mixed. You may have to add a little more flour, but keep the dough soft. Let stand overnight.  
Next day, roll dough out, cut in any shape desired. Sprinkle lightly with sugar and bake in 375-degree F oven. Cookies may be centered with raisins or nuts or cherries. This makes about five dozen. You can also drop these cookies on a cookie sheet if desired.

We apologize, and hope your next Sugar Cookies will be a bit richer.

## Farm Women 15 To Sponsor Band Concert June 6

Farm Women's Society No 15 met at the home of Mrs. Almus Shoemaker, Bartville, at 2 p. m. on Thursday. Mrs. Robert Weickel, president, conducted the meeting, with Mrs. Shoemaker in charge of devotions. The Youth Recreation committee reported that on Wednesday evening, June 6, it would sponsor a concert by both Senior and Junior Bands of Solanco High School in the Solanco gym. Proceeds will be used to help pay for uniforms for the Junior group. It was decided to write the secretary of the Joint School Board of Solanco schools, protesting the building of the new High School for the area in the Borough of Quarryville. It also was voted to make a contribution for the purpose of sending a child from Southern Lancaster County to the East Seal Camp for crippled children, located in the Pittsburgh area. This fund also is forwarding contributions from other organizations to the Crippled Children's Association in Lancaster.

## Do Dreams Come True?



Yes, Eike Franz-Georg Grevel, German exchange student, might well reply, for here he is pictured receiving his high school diploma at commencement exercises late last week in the Quarryville Methodist Church from Supervising Principal Harry K. Gerlach. In last week's Lancaster Farming, "Ike" expressed the

wish that he could see the West before returning to his homeland. At this moment, Ike is enroute to Oregon, to attend a national meeting of the Church of the Brethren, thanks to arrangements by his church and his hosts, Mr. and Mrs. A. Clyde Kreider. (Lancaster Farming Staff Photo).

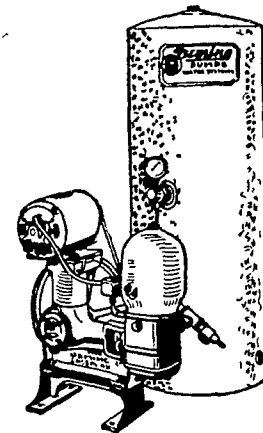
There have been several requests in this column, and response has been excellent. One of our readers, Violet Preston of 553 Chestnut Coatesville, asks if anyone has any crochet chair set patterns. She would like one of the Four-Leaf Clover. She would return it after use.

Keep those cards and letters coming. We appreciate them. Until next week, that's all until we will see you again.

### HEAR

The Mennonite Hour  
Each Sunday

Lancaster WLAN 12 30 P. M.  
Norrstown WNAR 8 00 A. M.  
Hanover WHVR 1 00 P. M.



## PUMPS

FOR EVERY FARM HOME

AND

INDUSTRIAL NEED

## HERR THE PUMP MAN

211 N. Ann St. Lancaster, Pa. Ph. 3-3694

## In 1956 More and More Farmers are Using Ful-O-Pep High Sweet Blend For Preserving Grass Silage

HERE'S WHAT IT WILL DO FOR YOU . . .

- PRESERVE GRASSES
- RETAIN VALUABLE JUICES
- INCREASE VALUE OF SILAGE
- SWEETEN
- ECONOMICAL

SEE YOUR FULL-O-PEP DEALER FOR FURTHER DETAILS

**D. W. Hoover**  
East Earl, R. D. 1, Pa.  
New Holland 4 7201

**J. C. Snively & Sons, Inc.**  
Landisville, Pa.  
3511

**Paul M. Ressler & Son**  
Paradise, Pa.  
OV 7-2493

**J. C. Walker & Son**  
Gap, Pa.  
Hickory 24169

**Ross C. Ulrich**  
Peach Bottom, R. D., Pa.  
riensel 19R3

**Millport Roller Mills**  
Lititz, R. D. 4, Pa.  
Lititz 6 8831