

For the Farm Wife and Family

We're still in the midst of Leb Kuchen, but there's more in the morning's mail, poems, household hints and recipes. It's a busy season, and quick meals are in order. But they must be hearty as well as speedy.

Winner of a one-year subscription to Lancaster Farming this week is Mrs. Eva Hoover, R3 Ephrata, who, among other items, includes a recipe for Aunt Hannah's Leb Kuchen. This we printed last week, so we'll pass over that and cover the rest of Mrs Hoover's letter:

"We enjoy Lancaster Farming, so I'm sending you some things you can use:

"First a poem

UNFINISHED STILL

A baby's boot and a skein of wool.

Faded and soiled, and soft, Odd things, you say, and no

Free To Women...

One year charter subscription to LANCASTER FARMING to one housewife each week who submits the best letter . . . recipe . . . home-making hint. Send your letter to LANCASTER FARMING, Quarryville, Pa.

doubt you're right
Round a seaman's neck this stormy night
Up in the yards aloft.

Most like its folly, but, mate, look here

When first I went to sea
A woman stood on the far off strand

FARM WOMEN 6
Society of Farm Women 6 will be guests of Farm Women 9 Saturday in a meeting at Martic Forge. In the most recent meeting, Mrs. John Hershey of Lititz gave an illustrated talk on the Holy Lands. Farm Women 8 will be guests of Society 6 June 2 at the home of Misses Stella and Lela Coble, R3 Elizabethtown.

With a wedding ring on a small, soft hand
Which clung so close to me.

My wife, God bless her! The day before

She sat beside my foot
And the sunlight kissed her yellow hair
And the dainty finger, deft and fair
Knitted a baby's boot.

The voyage was over. I came ashore

What, think you, I found there?

A grave the daisies had sprinkled while;
A cottage empty, dark as night
And this, beside the chair.

The little boot, 'twas unfinished still

The tangled skein lay near
But the knitter had gone away to rest,

With the babe asleep, on her quiet breast,
Down in the churchyard rear.

Mrs. Hoover encloses some items she calls

WIFE SAVERS

Use a hot knifeblade for cutting fresh bread, and a wet knife for cutting soft cake.

In making tea, never use water that has boiled before or has been standing in the kettle. Use fresh water and bring it to the boiling point.

The shell of a coconut can be cracked easily if the nut is put in a hot oven for a few minutes.

Pin small stockings together when you take them off. They will not get lost as quick when they go through the washing machine.

Icing will not sugar or grain when it dries on a cake if a pinch of salt is added to the ingredients.

Here's an old-time recipe that Mrs. Hoover offers, instructions on how to

DRY BEEF

20 pounds of good, fresh killed beef (the rounds)
One pint fine salt
One teaspoon saltpeter
One-fourth pound brown sugar

Mix these ingredients well, rubbing out all lumps. Divide the mixture into three equal parts. Place meat in a large bowl and rub thoroughly with one portion of the above mixture. Let stand one day. Turn meat several times daily. Allow meat to remain in bowl for seven more days. Then hang in a warm place until meat stops dripping. When dripping has stopped, hang in a cool shed about six weeks to dry thoroughly. Wrap meat in a clean muslin bag and keep in a cool place. If, in six months, it becomes too hard, soak in cold water for 24 hours and wipe dry. Wrap again in muslin bag and hang in cool place.

"We usually smoke it in our smokehouse, and we had no trouble with it getting hard," Mrs. Hoover adds.

By the way, Mr. Berus (who started this shower of Leb Kuchen recipes), Mrs. Hoover suggests you try Aunt Hannah's Leb Kuchen.

EDITOR SHOWS SLIDES

Ernest J. Neill, editor of Lancaster Farming, Thursday night showed colored slides of trips to Mexico and New Providence Island in the Bahamas before a meeting of the Green Tree Thimble Club at Middle Octorara Presbyterian Church.

Farm Women 21 Entertain Mothers

Farm Women 21 entertained their mothers as guests at Longwood Gardens near Kennett Square Thursday.

Enroute they stopped at the Red Rose for refreshments. The next meeting will be June 14 at the home of Mrs. Betty Martin, New Providence. Mabel Bucher will give a book review.

We have another recipe for Walnut Pie. This week our contributor is Mrs. Levi Sheneberger of R4 Lititz:

WALNUT PIE

Mix together
One cup sugar
One cup molasses
Two tablespoons flour
One cup hot water
One egg
One cup walnut meats
Mix together crumbs to put

Make A Point To Visit Our

Animal Health Department

THE QUARRYVILLE DRUG CO.

QUARRYVILLE, PA.
PHONE 100



TITE-ON SHINGLES

(Each Shingle Locked Down)

Resisted Hurricane Hazel

Especially designed for re-roofing over old wooden shingles and other types of roofing. We do the job for you with men who know how! 1000's of satisfied customers!

FREE ESTIMATES! EASY TERMS IF YOU DESIRE!

PAUL CLUCK - EAST PETERSBURG, PA.

Roofing - Siding - Spouting
Storm Windows and Doors
Phone Lanc. 2-6124
Or Landisville 2897

See Our Display Stand any Tuesday Eve. at Roots Country Mkt. East Petersburg.

FOR GREATER YIELD

Pasture, Small Grain and Corn

MATHIESON



ANHYDROUS AMMONIA

82% NITROGEN

Increase your yields and your profits.
Easily applied. Saves Time. Saves Labor.

DEALERS

L. H. BRUBAKER—R. 4, Lanc. & R. 3, Lititz

HIESTAND INC.—Marietta

SAUDER BROS.—New Holland

CUSTOM APPLICATORS

JESSE B. DOURTE
R3 E-Town 7-3881

ROY W. MARTIN
Marietta 6-9358

AMMON HOOVER
Lititz R3. Ph. 3-1743

AMOS N. MILLER
Strasburg OV 7-3630

ROY ERB
Pequea

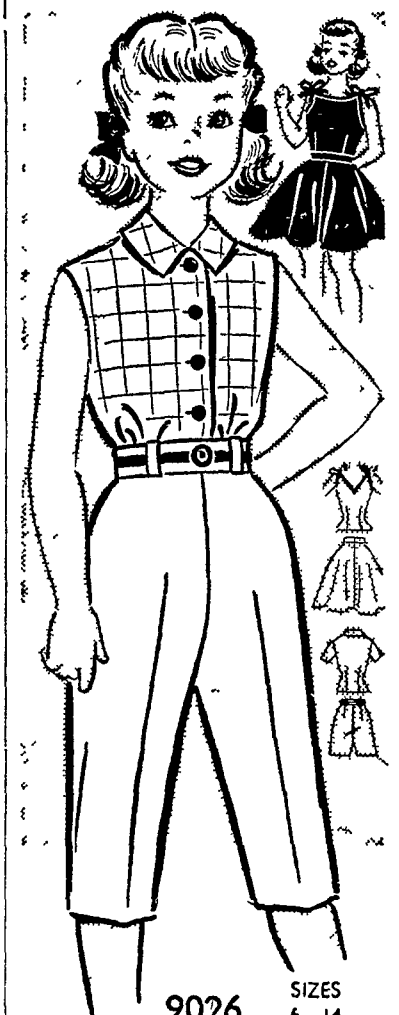
HIESTAND INC.
Marietta 6-9301

L. B. BRUBAKER
Lititz R3 Ph. 6-7766

CLARENCE RUTT
New Holland 4-2721 or 4-9797



Today's Pattern



9026 SIZES 6-14
by Marjorie Martin

Pattern 9026: Girls' Sizes 6, 8, 10, 12, 14. Size 10 shirt, 1 yard 35-inch, pedal pushers, 1½ yards; sun-top and skirt, 2¾ yards.
Send Thirty-five cents in coins for this pattern—and 5 cents for each pattern if you wish 1st-class mailing. Send to 170 Newspaper Pattern Dept., 232 West 18th St., New York 11, N. Y. Print plainly NAME, ADDRESS with ZONE, SIZE and STYLE NUMBER.



Smart Homemakers Have a Kitchen Telephone

A kitchen telephone is so convenient. It lets you reach instead of run when the telephone rings.

Really, an extension telephone is wonderful anywhere, and it can be used in so many places . . . the kitchen, the bedroom, the living room . . . in fact, almost any place in your home.

You'll be amazed at the low cost and the lasting satisfaction. Call our business office for full information on this extra telephone convenience today.

PENNSYLVANIA COMMUNITY TELEPHONE COMPANY

A Subsidiary of the Commonwealth Telephone Co.



DALLAS, PA.
QUARRYVILLE, PA.