

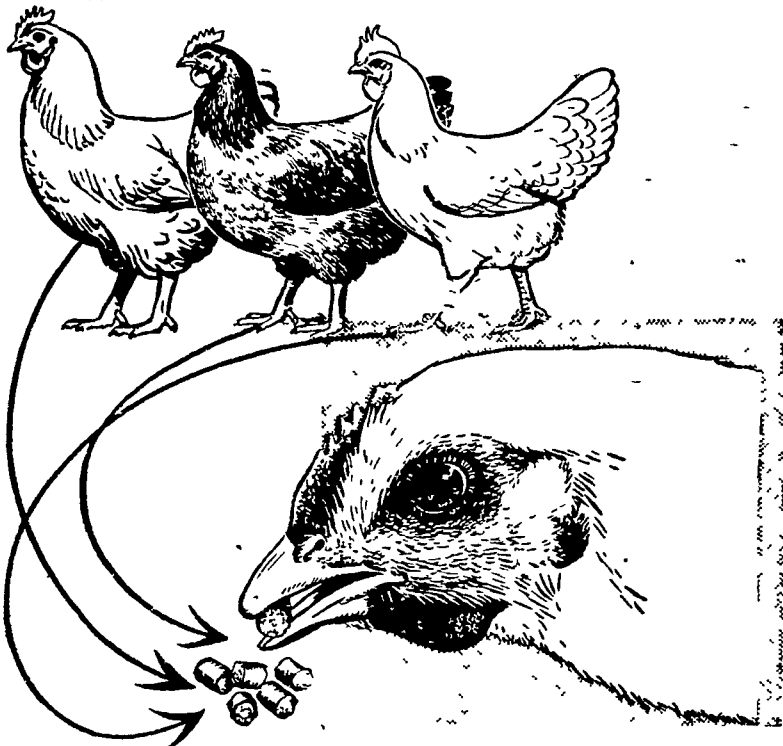
Four-H Winners Honored at Lunch Sponsored by Lancaster ABClub

(Continued from page one) Farm Show, through the Eastern District Show at Lancaster to Harrisburg, has been progressive in her case, from fifth in 1953 to first and second in 1954 to grand champion last year. She also gave credit to the original breeder of her Shropshires, Robert Harnish, pointing out that it was unusual for Shrops to move into the championship ring so quickly.

For a view of the baby beef work in 4H, Harry Lee Hoar of

R1 Gap, explained that he was a member of the Red Rose Baby Beef and Lamb Club, and too tasted the grand championship honors with his baby beef steer at the 1956 State Farm Show. His path along the championship trail was from Ephrata to first place at the Eastern District in Lancaster, and on to Harrisburg and the coveted purples there. He plans to go to college and study agriculture, with part of the winnings he has made as a showman.

NEW PURINA Bite-Size CHECKER PLAN OF GROWING PULLETS



CUTS GROWING COST by cutting feed waste

Compared to usual mash feeding, the new Bite-Size Checker plan can make a big cut in your growing cost. Chicks start eating the new, smaller Checkers when only 4 to 6 weeks old. It takes less feed because pullets spill less out of the hoppers. And the few Checkers that are spilled are quickly picked up—not lost on the ground like mash.

Save more money with PURINA PULLET DEVELOPER

When pullets are 10 weeks old, change to Pullet Developer Checkers which produce a big laying bird at still lower cost.



Snader's Mill
Mt. Airy

B. F. Adams
Bird-in-Hand

John J. Hess
Vintage

J. Fred Whiteside
Kirkwood

S. H. Hiestand
Salunga

John J. Hess II
New Providence

H. S. Newcomer
Mt. Joy

John B. Kurtz
Ephrata

Wenger Bros.
Rheems

James High
Gordonville

Warren Sickman
Pequea

J. H. Reitz
Millway

Lower Clark Farm Of 142 Acres Sells

J. Harold and Vera B. Frey of Running Pump Road have purchased the 142-acre Lower Clark Farm on the Cameron Estates near Donegal Springs for an undisclosed sum.

Included were a ten-room dwelling, bank barn, tobacco shed, and concrete poultry houses. Possession will be July 1, through the Schram Realty Co. of Lancaster.

Turning to the dairy breeds, Abram Flory, R3 Manheim, reported four grand championships in the ten years he has been a 4H club member, from second place at the Lancaster district show to reserve champion, and grand champion at West Lampeter. Having completed 4H work, passing beyond the maximum age, Abram today is applying what he has learned in club work to actual business and has a herd of 14 Ayrshires.

Abram brought out a point that was reemphasized by County Agent Smith that there's proof of support from good parents when a youngster moves through 4H work into showing and championships such as proved by this meeting.

Crops, capons and pigs received the plaudits of Bruce Boyd, R1 Ephrata, who told the group that there are many phases in production of winners. Take crops for example: seed selection, soil testing and fertilizing, cultivation, the fight against disease and insect, harvesting, and, marketing. Much the same applies in the case of pigs, proper selection of properly bred stock, studies of feed costs, pasture management, all to produce better meat for the consumer table. A member of the Lancaster County livestock judging team that went to Penn State, Bruce told of his work in 4H.

Appeal to Consumer

On capons, much the same principles must be followed: breeding, proper care, proper rations, the best gains at the lowest possible cost, and proper dressing to present to the consumer the most attractive buy he can make. Right now, he is working with 150 capons — a prize from last year's winnings — that are the basis of his new project for 1956.

Program chairman was Ray Syndansk. Miss Ullrich appeared on behalf of the Community Chest, introduced by Nathaniel C. Hager, county drive chairman. Hal Spinner was song leader.

Framed citations were on display for outstanding contributions to the Lancaster ABC's Spastic Paralysis Fund, to Hager Bros, Fidelity Electric, Robert Hall Clothiers, Armstrong Cork Co., Schick, Inc., Stanley H. Deiter, auctioneer, Champion Blower and Forge Co., Merrill and Margaret Hassel, Joseph Moss, Hubley Manufacturing Co., Richard Oblender, Francis Ehrgood, Mr. and Mrs. Newton Mearing, L. B. Herr & Son, Shenk Bros., and Carolyn Wiker.

7 More Cars Derailed in 2nd Wreck This Week

Seven more cars were derailed early this morning in the second such accident in less than a week on the Columbia and Port Deposit branch of the Pennsylvania Railroad.

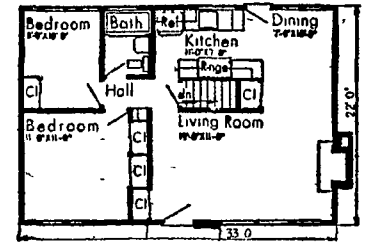
The latest accident occurred shortly after midnight this morning just west of Safe Harbor on a westbound train. Both the east and west tracks of the line are blocked to traffic by the wreckage. The railroad called crews from the site of last week's wreckage to help clear the tracks in the latest mishap.

'Bare Minimum' Plan from Small Homes Guide



This tiny structure, featured—and enthusiastically so—by SMALL HOMES GUIDE magazine, might be considered the bare minimum in a two-bedroom house. Designed by Architects Grainger Thomas and Baar, the modern-looking honeymoon cottage is just the thing for the beginning family.

In spite of the small size of the house, the rooms are good-sized, and closet space is well planned. Open planning gives a more spacious feeling. Total area is 726 sq. ft. Information on blueprints and their cost can be obtained by writing to SMALL HOMES GUIDE, Dept. 1674, 621 N. Dearborn Street, Chicago 10, Ill.



Rogation Day Is Observed Locally

Several Lancaster County churches celebrated Rogation Day last Sunday on the 1,504th anniversary of the tradition for blessing livestock, seed and soil.

Among churches making special observance were Chestnut Level Presbyterian, Bangor Episcopal Church at Churchtown, Bergstrasse Evangelical Church, and at the home of Mr. and Mrs. George W. Webb, Fal-mouth Pike, where the Rev. Emmert Moyer, rector of St. Luke's Episcopal Church in Mount Joy conducted the blessing of seed and soil.

Dr. W. W. Finlay, business administration professor: "Man has a much greater capacity for inventing than for managing (the things invented)."

Farm Compensation Insurance

There are more accidents in farming than in any other business!

Protect yourself with a policy in the

P. T. F. Company
SEE

John F. Weaver Co., Inc.
202 Fulton Bldg.
Lancaster Ph. 2-6912



ADVANCED Power Steering Is Yours TODAY in a Great Fleet of JOHN DEERE TRACTORS

It's the success story of the tractor industry! Two years ago, John Deere introduced factory-engineered Power Steering on row-crop tractors. No other single tractor feature ever received such widespread and enthusiastic acceptance. Here was unsurpassed ease of handling that meant new freedom at the wheel on every tractor job. Now—John Deere offers you Advanced Power Steering for Models "50," "60," "70," and "80" Tractors—steering that is even smoother and more positive in its operation... even more quickly responsive to your command. Ask us for a free demonstration of a John Deere Tractor with Advanced Power Steering soon.

Landis Bros. 1305 Manheim Pike Lanc. Ph. 3-3906
Wenger Impl. Co. Buck, Pa. Ph. BUTLER 4-4467

F. H. Sholtzberger
Elm, Pa. Ph. Manheim 5-2141

