

## Poland Pork Still Moving Into U. S. Sale

Continued sharp increases in imports of canned pork—largely ham—from communist Poland were disclosed today by the American Meat Institute in reporting figures obtained from official government sources.

"During the first quarter of this year," said the meat packers' organization, "imports from Poland totaled 7,729,000 pounds against 5,550,000 lbs during the first quarter of 1955. This was an increase of approximately 40 per cent for the quarter. During March—usually a low month—imports were 86 per

### HIS REASONS

CLINTON, Tenn. — Court officials just couldn't understand why a defendant insisted on posting \$500 bond, when the grand jury had found no evidence to indict him on an assault-and-battery charge. Then, they found that, on the way to the courthouse, he had run two red lights, run three stop signs, traveled 90 m. p. h. in a 45 m. p. h zone and driven on the wrong side of the street. He explained, "I want to save myself another trip back here."

cent greater than during March of 1955; 1,047,000 lbs against 562,000 lbs.

"Imports from other countries remained about the same or were slightly greater, but these countries recognize that foreign trade is a two-way street and they import considerable quantities of American agricultural products, including lard, fancy meats, hides, tallow and other products derived from American livestock. Poland imports but a minute quantity of American meat and livestock products and the dollars it obtains for canned pork sold in the United States are utilized for other purposes."

**New & Used Tractors & Farm Equipment**  
**CLYDE E. KEENER**  
 Located at Intersection Of Rt. 230 & 72  
 R. D. 3, Lanc. Ph. 4-6414  
 Sale 2nd Thursday each month  
 Private Daily

We have for sale at all times

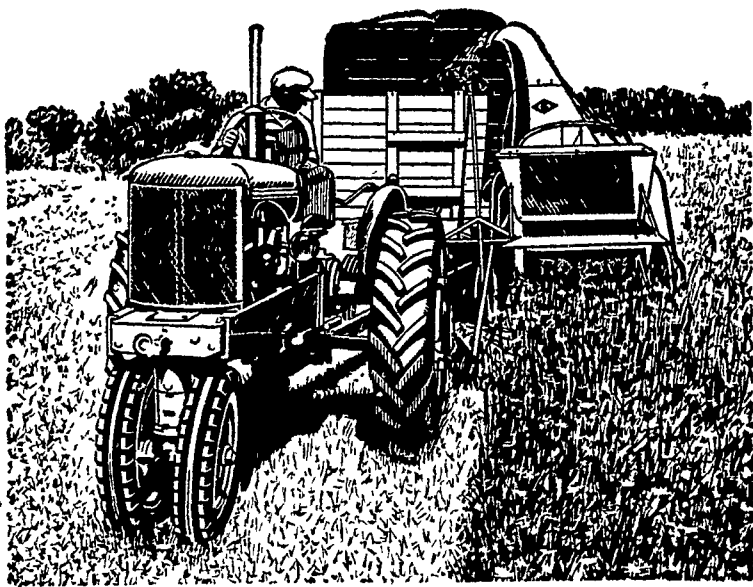
— Mixed Hay — Timothy  
 — Alfalfa — Straw — Ear Corn

Delivery anywhere in Our Prices Will  
 Lant. Co. & Nearby counties Please You  
 We treat you right ALL-WAYS  
 Ph. STRASBURG OV 7-3211

**The Esbenshade Turkey Farm**

Since 1890  
 Paradise Lancaster Co. Pa.

## Good Feed Insurance



...Regardless of weather

Now you can be sure of year-round, high-quality feed with the Allis-Chalmers Forage Harvester.

Drouths or unusually low temperatures can be costly... reducing your feed supply and forcing the sale of breeding stock or unfinished cattle.

Every year livestock farmers are trusting less to weather and more to the Allis-Chalmers Forage Harvester to supply good forage the year 'round.

The A-C "3-in-1" Forage Harvester may be equipped for cutting grass crops direct, for picking up hay or vine crops from the windrow, or for harvesting row crops. Big yard-wide cylinder has curved blades that both cut and throw. You handle more material with less power. Let us prove it.

Tune in

the National Farm and Home Hour — Every Saturday — NBC

**ALLIS-CHALMERS**  
 SALES AND SERVICE

R. S. Weaver  
 Stevens, Pa.

L. H. Brubaker  
 Lititz, Pa.

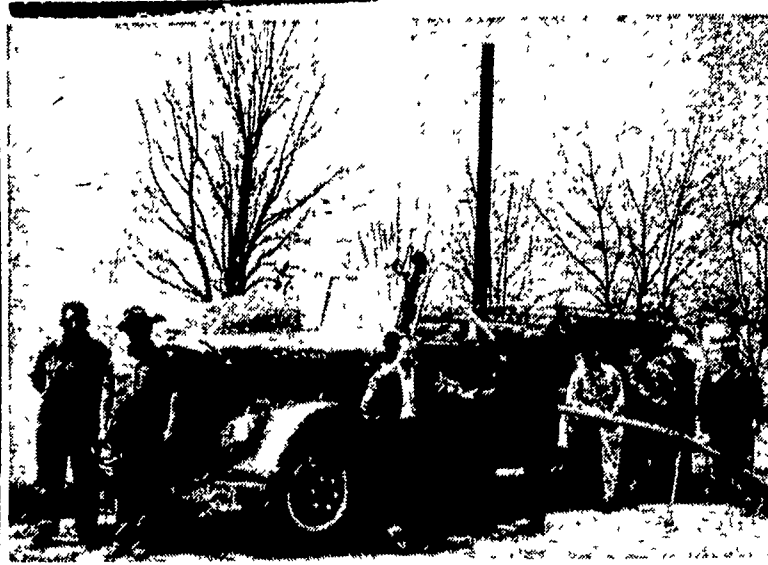
N. G. Myers & Son  
 Rheems, Pa.

Mann & Grumelli Farm Service  
 Quarryville, Pa.

L. H. Brubaker  
 Lancaster, Pa.

Snavelys Farm Service  
 New Holland, Pa.

## New Strasburg Fire Truck



Here is the \$15,000 Ward-LaFrance fire truck received by the Strasburg Fire Company, which replaces the 1935 Reo sold for \$601 to the Wintertown (York County) Fire Co. The 500-gallon a minute pumper was paid on delivery, with a \$5,000 gift from the Auxiliary and funds from various benefits. Here, from left to right, are Paul Herr, president; Marvin Weaver; Carl Atchison, from the Philadelphia Fire Underwriters; Charles F. Aulhouse, fire chief; William Rapp, Jr., Jack Koch, all of Philadelphia Underwriters and Park Shaubach, treasurer, with John McGee, actory representative from Ward-LaFrance, Elmira, N. Y. (Lancaster Farming Staff Photo.)

## Sales Dates

MAY

May 12 — Harry M. Pickel, 343 E. Chestnut St., Lancaster; 6-room brick house, conveniences household goods.

May 12 — By Mark Althouse between Clay and Hopeland, real estate, farm implements and household goods.

May 12 — Richard R. Steele Estate, North Decatur St., Strasburg, real estate, household goods. 12.30 p. m.

May 12 — Henry F. and Anna C. Hess, 39 East Lincoln Ave., Lititz, household goods, 12.30 p. m.

May 12 — Charles Falk Estate, 235 North Cherry St., Lancaster, personal property, real estate, 1 p. m.

May 14 (Night) — Kaylor Bros., 1½ miles east of Elizabethtown, along route 230; farm machinery and tools, 6 p. m.

May 15 — Lewis G. Good, one mile east of Donegal Springs (Donegal Twp.) road from Florin Farms to Colebrook road, farm implements, livestock, 12.30 p. m.

May 16 — Kenneth W. Dietrich, Brickerville, Elizabeth Twp., along route 322, 1½ story frame building with storeroom and six room living quarters, also six building lots (each 100 ft. x 170 ft. more or less), 6:30 p. m.

May 16 — William Z. and Paul Z. Martin, farm machinery and equipment, 10 a. m.

May 17 — Mrs. Ina D. Graybill, 302 N. Broad St., Lititz, household goods and antiques, 6:30 p. m.

May 16, 17, 18 — Ringwalt & Stehman, along Marietta Pike, Rohrerstown, sales of general merchandise store each evening at 6:00 p. m.

May 19 — By A. Martin Eshleman, along the road leading from Clay to Lititz, close to the Hammer Creek Church, household goods and garden tools.

May 19 — Mrs. Scott Diffenderfer, Cozy Corner Restaurant, New Holland, restaurant and household goods, 1 p. m.

May 19 — Ninth Annual Spring Show and Sale, Brandywine Angus Breeders Association, Guernsey Sale Pavilion, Lancaster.

May 19 — Robert D. Earhart, one mile north of Elizabethtown on old Hershey Pike; 23 registered Holstein cows and young cattle, farm machinery, 12:30 noon.

May 26 — Mary Hackman Estate, Brunnerville, Warwick Twp., real estate and personal property, 1 p. m.

May 26 — By Mrs. Stella K. Withers, along the Brubaker Valley road about one half mile from Clay, household goods.

June 9 — Samuel Auker, Jr., butcher shop, Rothsville, real estate, butcher shop equipment, household goods, 1 p. m.

July 21 — By the Martindale Fire Hall, household goods.

## Fisherman Paradise Will Open Friday

Pennsylvania's renowned "Fisherman's Paradise" along Spring Creek in Centre County, near Bellefonte, will open its 22d season today, Friday, May 11, at 8 a. m. It will close July 14.

Rules and regulations will be handed each fisherman upon registration. With the exception of adding rubber and plastic body artificial flies to the list of approved lures, granting permission to clean fish at designated places and extending the privilege of assisting others to land fish, regulations remain the same as last year.

## STANLEY H. DEITER

Auctioneer And Appraiser  
 1906 WILLOW ST. PIKE  
 PH. LANCASTER  
 4-1796

## O & D Shavings

... for clean, dry houses, excellent fertilizer, and real savings for you...

Phone: MANHEIM  
**5-2305**

Prompt Delivery Service!

A Ton of SHAVINGS goes twice as far...

## O & D Sawdust Co.

109 North Main Street

MANHEIM, PA.

## Martic Supervisors Push for Stop Sign

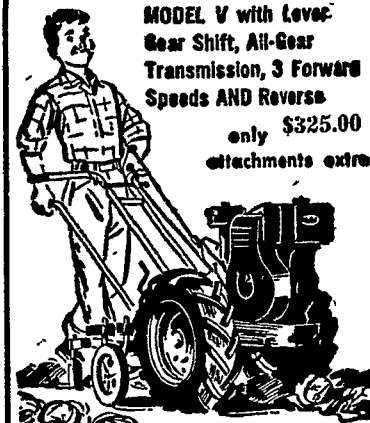
Another attempt will be made by the Martic Township Supervisors to have a stop sign erected at the crossroads of the Mt. Nebo-Rawlinsville State highway and the Mt. Nebo-Bethesda township road, in the Mt. Nebo area, following an accident occurring at the intersection the past week, when a couple from Red Lion, York County, were seriously injured in an auto-school bus crash.

U.S. economy just misses the \$400 billion annual rate

**you CAN send a boy to do a man's work!**  
 with America's easiest-to-own, easiest-to-use utility tractor



**SIMPLICITY 5 H.P. MODEL V** with lever gear shift, All-Gear Transmission, 3 Forward Speeds AND Reverse  
 only \$325.00  
 attachments extra



So easy to use, so rugged and versatile that it does a man-size job on dozens of farm, garden and yard jobs — that's Simplicity! Compare feature for feature, and you'll find Simplicity offering greatest performance at lowest cost!

2 1/2 H.P. MODEL FB POPULAR FAVORITE With lever gear. 2 1/2 H.P. MODEL LB shift, 6 forward With 2 forward speeds and reverse speeds and reverse \$225.00 \$185.00

FOB Factory attachments extra

**Snavely's Farm Service**

NEW HOLLAND  
 Phone 4-2214

## Wolgemuth Bros., Inc.



FOR

**POULTRY & LIVESTOCK**

Florin, Pennsylvania

Phones: Mount Joy 3-9551 & 3-8312