

BREAKS ARM

Leon Brubaker, six, son of Mr and Mrs Ray Brubaker, R3 Litz, broke his arm Tuesday in a fall while at play. He entered Lancaster General Hospital as a surgical patient.

New & Used Tractors & Farm Equipment

CLYDE E. KEENER
 Located at Intersection Of Rt. 230 & 72
 R. D. 3 Lanc. Ph. 4-6414
 Sale 2nd Thursday each month
 Private Daily

Household Goods Brings Good Prices

Mr. and Mrs. E. J. Brosius, Quarryville R1, held a public sale of some of their household goods recently with Kersey Bradley as auctioneer.

Good prices realized included: dahlia bulbs up to \$1.25 per bunch, violets up to \$1.75 each; glaxias, \$3.50, potted plants, from 50 cents to \$2.50 each; small oil lamp with shade, \$25; dish bench, \$21; dough tray, \$11, wardrobe, \$12.50, picture frames \$9.75; soap dish, \$.3, vanity bottles, \$8.50; bed, \$13.50; dresser, \$14, small blue dish, \$.3, spice box, \$.3, rockers, \$15; bookcase, \$11; upright piano, \$52.

Sales Dates

MAY

May 4 — Walter Dupes, Peach Alley, -Elizabethtown, annual spring housecleaning sale. Many things, antiques included 6:30 p. m.

May 4 — Maurice E. Stauffer, 1 mi. n. of Q'ville, road from Hawksville to Wimer's Shop, Eden Twp real estate 2 p. m. DST.

May 5—Liberty Square-Fishing Creek Road, real estate, household goods, by G. Horace Long, 12:30 p. m.

May 5—Elizabethtown Area School District three school houses - sale of each on respective premises: Ebersole's road from Bainbridge-Elizabethtown Road to road from Good's Church to Susquehanna Trail, adjoining farms of Martin-Good and Samuel Rutherford. 1 p. m.; Steven Hill, state road from Elizabethtown to Falmouth about one half mile east of Falmouth and four miles west of Elizabethtown, adjoining farms of Jacob Höffer and Raymond Myers. 2 p. m.; Wickersham, road from Lobato to Susquehanna Trail, about one mile from Lobato, adjoining Heistand Bros. farm and Word of Life Chapel. 3 p. m.

May 5—B. F. Hershey, Martie Twp., on road from Mt. Nebo to Bethesda, 3 miles south west of Rawlinsville, two story modern block house and household goods, 12 Noon.

May 5—Lizzie S. Stoltzfus estate, Rothsville, real estate, per-Monterey, household goods, antiques. 12:30 p. m.

May 5—Annie Walters Estate, Sporting Hill, two miles west of Manheim, real estate, household goods. 12.30 p. m.

May 5 — Eli Ginder, Landisville (on old Hbg. Pike), east of the Hotel, used white pine lumber, taken from large barn. 12 noon.

May 5 — Mrs Lizzie K. Fry, 38 Center St., Litzitz, household goods, 1 p. m.

May 5 — Intercourse - Community Sale. Household goods, some antiques; farm implements, all practically new; chicken equipment; 2,000 ft. lumber, 400 locust posts; truckload of evergreens, azaleas, fruit trees. 11 a. m.

May 5 — Missouri Nelson Estate, 415 Maple St., Terre Hill, personal property, 12:30 p. m.

May 10—Clyde E. Keener, 1½ miles north of Lancaster, along Rt. 230, tractors, farm machinery, tools, hay, straw. 10 a. m.

May 11 — William Z. and Paul Z. Martin, Blue Ball, farm equipment. 10 a. m.

May 12 — Harry M. Pickel, 343 E. Chestnut St., Lancaster, 6-room brick house, conveniences household goods.

May 12 and 19—Bowman Estate, Rothsville, real estate, personal property, plumbing and hardware equipment.

May 12—Two miles south of Adamstown, household goods and antiques. 10 a. m. (DST). Terms by Charles G. Good.

May 12—In Bareville, household goods, tools, etc. 12:30 p.m. by Paul L. Kochel and Bertha Neiss Kochel.

May 19 — Leonard E. Yohn, Churchtown, at the Windsor House Antiques, household goods. 12:30 p. m.

May 26—Mystery Sale. Mike Bender Estate, Slackwater.

Wooded Tract of Six Acres \$260

William Leisey, Ephrata, purchased a 6.2-acre wooded tract in the William E. Gearhart public sale for \$260. H. H. Leid, Denver, was auctioneer. The woodlands were located between Brickerville and Schaefferstown.

Other items sold included six old German locks, \$11 to \$12; wood chest \$5; old Civil War revolver, \$6; plate with Dutch design, \$13; kitchen vase \$15; balloon back rocker \$20; leather powder flask \$4.

Dividends on U. S. rose 13 per cent in 1955 to a new high.

Tractor Brings \$620, Keith Sale

Highlighting the Edna E. Keith sale between Reinholds and Denver was a tractor at \$620, two-wheeled trailer \$100, high sink \$22, low sink \$12.

Guineas sold at \$2 each and chickens at \$1.95 Auctioneer was Frank Snyder.

March of Science

A new Hungarian peach tastes like an almond, and if it supersedes the ordinary kind, then we suppose some horticultural will have to develop an almond that tastes like a peach—Toronto Star

STANLEY H. DEITER

Auctioneer And Appraiser

1906 WILLOW ST. PIKE

PH. LANCASTER 4 1796

Sound Reasonable

A lot of people are killing these days, some of them for rather trivial reasons. We don't believe anybody ought to kill anybody without having a fair to middling good reason for doing so.—Olin Miller in Atlantic Journal.

BELMONT

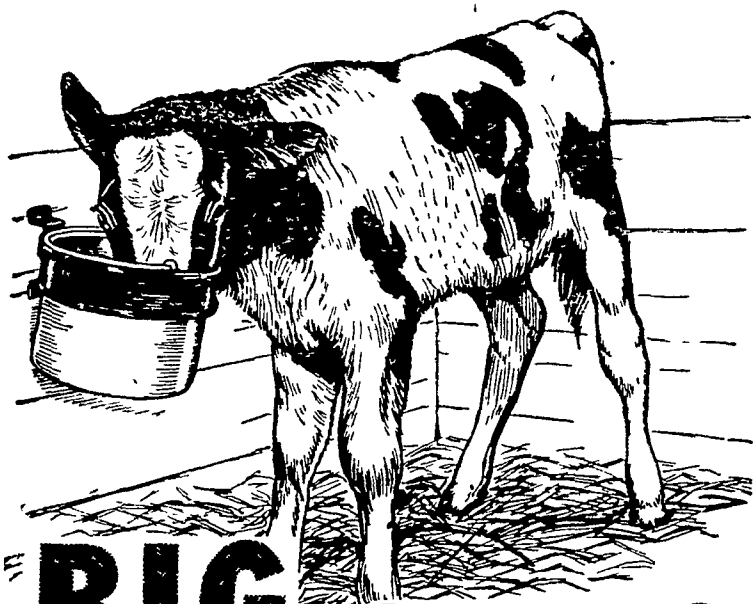
97 Per Cent Pure Agricultural Limestone

Soil Testing Service

CALL DAVID B. JOHNS Overland 7-3301

WENGER & SENSENIG CO.

Phone Gap HI 2-4500 R. D. 1, Paradise, Pa.



BIG CALVES Make BIG Milkers

As a rule, big cows give more milk than small cows, utilize a bigger percentage of home-grown roughage for milk production, are worth more as beef when their working days are over.



Size in a cow means milk and profit for you and size in a dairy cow is easiest to attain when that cow is a calf, because big calves make big cows.

Calves fed New Purina Nursing Chow and New Purina Calf Startena make big gains... the Purina feeding program calls for calves to be halfway to breeding weight at four months... and that's the kind of flying start that make big heifers, big two-year-olds, and big milkers.



Feed these famous Purina Calf Chows, now produced in an improved form... to grow big calves... and big cows... for your farm!

KEEP DOWN DISEASE...

Clean the pen and feeding pails with Purina Disinfectant.



Snader's Mill
Mt. Airy

B. F. Adams
Bird-in-Hand

John J. Hess
Vintage

J. Fred Whiteside
Kirkwood

S. H. Hiestand
Salunga

John J. Hess II
New Providence

H. S. Newcomer
Mt. Joy

John B. Kurtz
Ephrata

Wenger Bros.
Rheims

James High
Gordonville

Warren Sickman
Pequea

J. H. Reitz
Millway

Red Rose Laying Mash

Made for heavy, profitable egg production. High energy mash blended and balanced to meet the feed requirements of layers under the strain of heavy egg production.



Distributed by

WEST WILLOW

FARMERS ASSOCIATION

WEST WILLOW

Ph. Lanc. 4-5019



TITE-ON SHINGLES

(Each Shingle Locked Down)

Resisted Hurricane Hazel

Especially designed for re-roofing over old wooden shingles and other types of roofing. We do the job for you with men who know how! 1000's of satisfied customers!

FREE ESTIMATES!

EASY TERMS IF YOU DESIRE!

PAUL CLUCK - EAST PETERSBURG, PA.

Roofing - Siding - Spouting
Storm Windows and Doors

Phone Lanc. 2-6124
Or Landisville 2897

See Our Display Stand any Tuesday Eve. at Roots Country Mkt. East Petersburg.

USED TRACTORS

- * Farmall Super M, with live PTO
- * Farmall Super C
- * Farmall Super A Tractors
- * Farmall H
- * Allis Chalmers G with loader
- * Oliver 70
- * John Deere A
- * John Deere 70 (new)

McCORMICK FARM EQUIPMENT STORE

1054 S. STATE ST.

Ephrata, Pa.

Phone Ephrata 3-2283