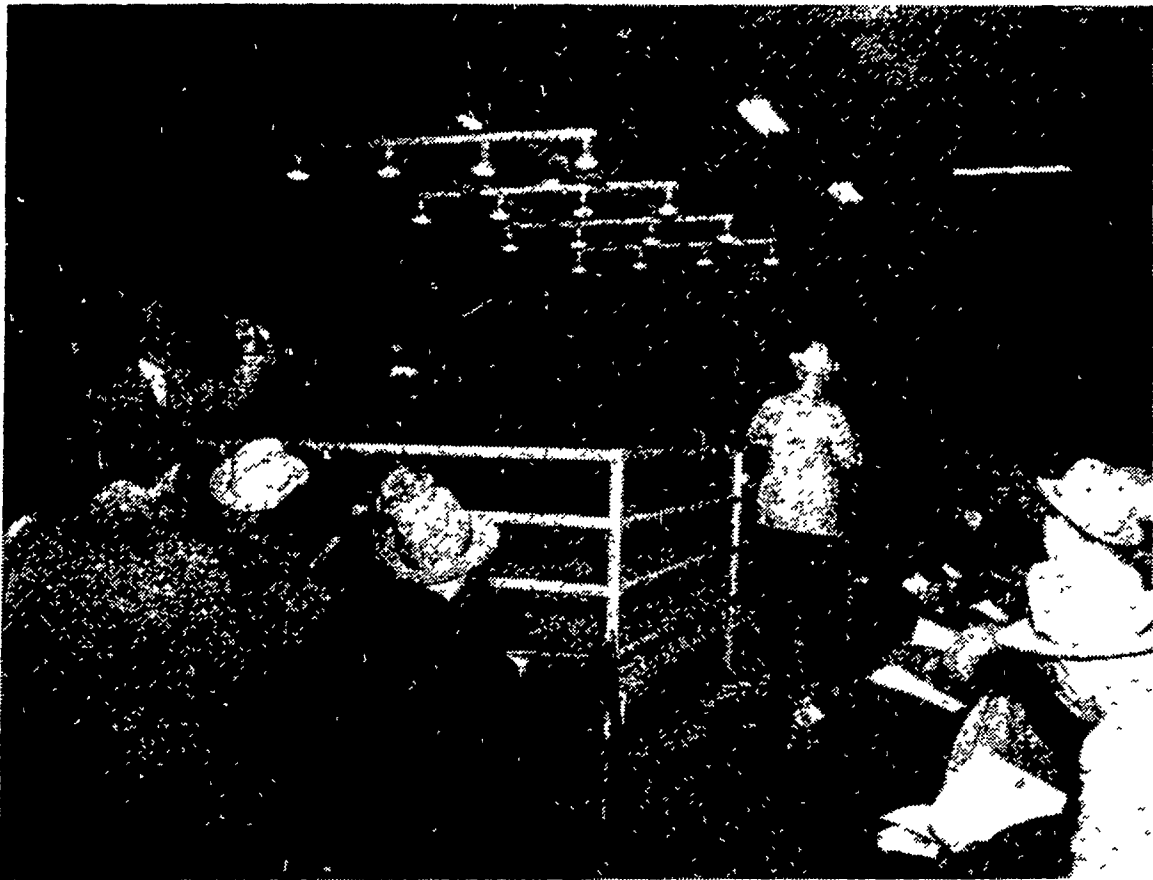


"I've Got That Bid"



Harold Schroeder, fieldman for midwestern farm dairies, here takes a bid from the stands at the Millarden Angus sale and relays it on to Auctioneer Paul Good. Final buyer at this moment was the Pennsylvania State University, paying \$4000 for the typey Angus female in the ring. With his back to the camera, to the right, seeking a higher bid, is Ray Roth. (Lancaster Farming Photo).



Well identified, the Millarden Farms Sales barn near Annville, in Lebanon County Saturday was the scene of one of the season's outstanding Angus auctions. Despite snow, the crowd was large, bidding enthusiastic. A top of \$6,500 was scored on cows, and two bulls each sold at \$2,500. (Lancaster Farming Staff Photo)

Millarden Angus Sale Top \$6500

(Continued from page one)

Eileenmere of Woodbar proved one of the outstanding sires at the 1956 Farm Show in Harrisburg, and his get took 11 first prizes.

Five generations of the Millard Family have been engaged in the quarrying and processing of limestone at Annville, Palmyra

and Swatara Operations cover nearly 3,000 acres on the Pennsylvania Farm and 2,000 acres in the Georgia farm. About 1,000 acres of the Pennsylvania farm are used for quarrying, the balance pasture and crops. Show horses and Hampshire hogs also are produced on the farm

Now numbering 700 head, the Angus herd is led by Eileenmere of Woodbar, purchased at \$30,000, and his daughters are being crossed with Ankonian OB 13th.

Mr Christian has been well-known in Pennsylvania circles prior to joining Millarden. He did much excellent work with 4-H club boys and girls and steer feeding projects before joining the Georgia operations.

Weather was a bit bitter, a prelude to snows that continued through the weekend into the season's worst storm. But it didn't keep the buyers away, like Oscar Hammerstein II of Doylestown, Pa., or W. D. (Bill) Fishback of Glen Arty Farms near Versailles, Ky. In Bill's case, he flew to Washington, where weather forced him to continue on to Annville and Hershey by rail.

Hotel Hershey was sale headquarters. Auctioneers were Hamilton James, Newton, Ill.; Paul Good, Van Wert, Ohio, and Stan Haworth, Warrenton, Va. Dave Canning, fieldman secretary of the Canning Land and Cattle Co., Staunton, Va., was sale manager, Scott French, fieldman-secretary of the Pennsylvania Aberdeen-Angus Association, was sale consultant. Fieldmen for many of the eastern and Corn Belt publications and associations too were on hand, including Jim Coyner, eastern representative of the national Angus association.

Most PORTABILITY PER HP!
HP. HOURS OF SERVICE!
WISCONSIN
 HEAVY-DUTY
 Air-Cooled
ENGINES

Here's why Wisconsin Heavy-Duty Air-Cooled Engines are BEST ALL WAYS in the 2 to 30 hp. range.

- 2 sets of Timken bearings on shaft.
- Most efficient air-cooling for size.
- Jet and spray oiling... no fittings
- "Hot" magneto and impulse coupling.
- Steel forged rods, and crankshaft.
- Accurately balanced, light weight, heavy-duty in design and construction.

We can supply Wisconsin Air Cooled Engines in a full range of types and sizes—2 to 30 hp., 4 cycle single cylinder, 2-cylinder and V-type 4 cylinder engines.

BART'S
Repair & Service
 1952 Landis Valley Rd.
 Lancaster Ph. 21568

DEFENSE. 1957 is expected to add up at least 35.2 billion dollars and may go even higher. By comparison, expenditures for the present

fiscal year, ending June 30, 1956, are to total between 34 and 34.5 billions. The toughening Russian attitude is held responsible for the increase.

Poultry Profits Start Here!

Give your chicks a better start with

Red Rose®
 "Early Nutrition"

Your future layers, broilers or breeders need extra nutrients now—during critical growth periods—to insure profit later on. Give them that important "early nutrition" with Red Rose Guaranteed Chick Feeds.

Red Rose supplies your chicks with antibiotics, vitamins and growth stimulant that pay off in vigorous, faster growth and feathering. For peak poultry production—start feeding Red Rose now!



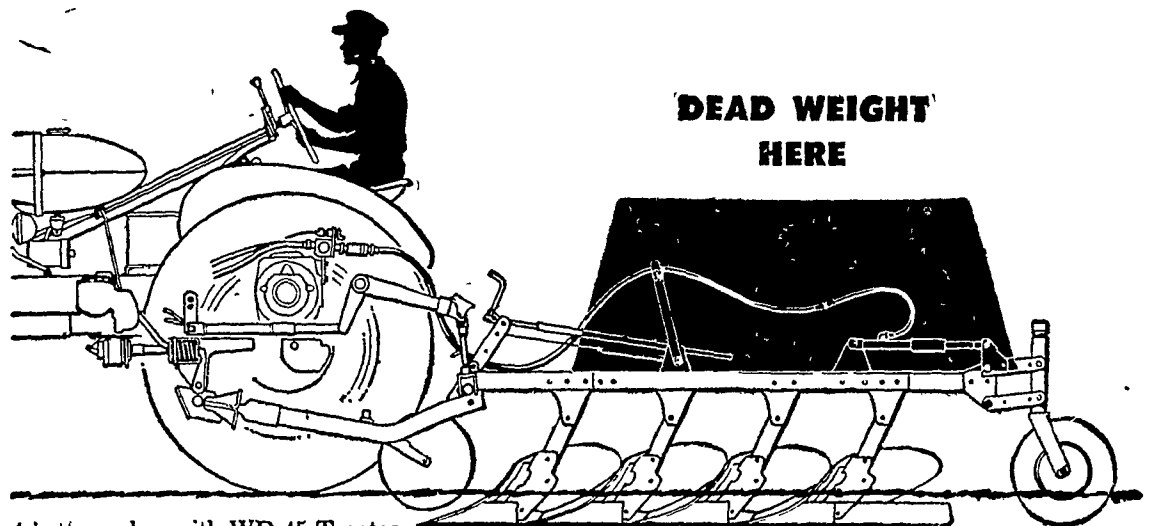
WEST WILLOW

FARMERS ASSOCIATION

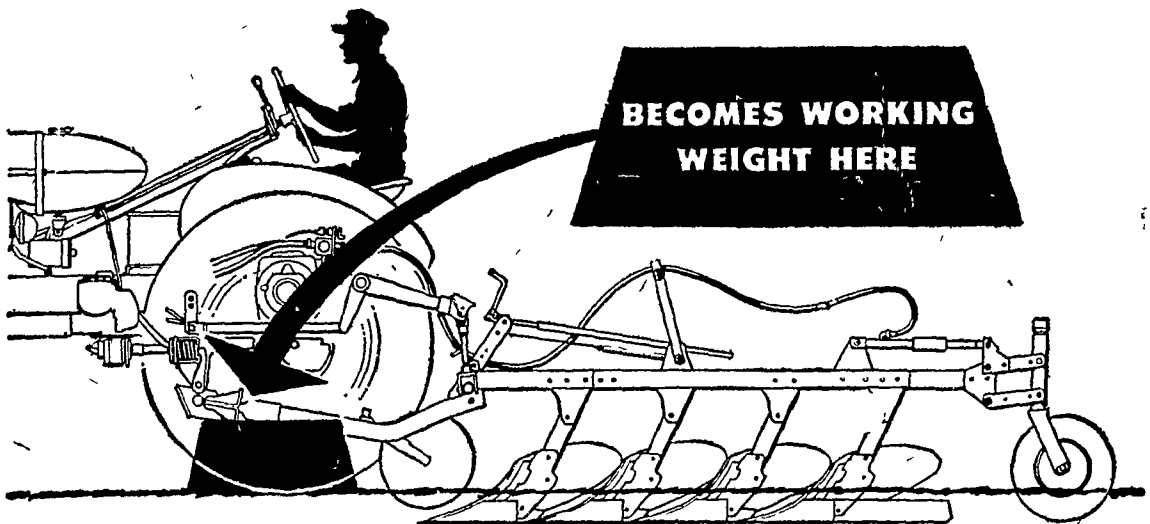
WEST WILLOW

Ph. Lanc. 4-5019

here's what happens with
TRACTION BOOSTER



4-bottom plow with WD-45 Tractor



AUTOMATICALLY, AS NEEDED

- ★ MORE WORK
- ★ LESS DEAD WEIGHT
- ★ LOWER COST

Let us demonstrate ALLIS-CHALMERS ENGINEERING IN ACTION on your farm. Call today.

Your choice of fuels, too, gasoline, L-P gas, diesel.

ALLIS-CHALMERS

SALES AND SERVICE



- | | | |
|--|----------------------------------|----------------------------------|
| Snavelys Farm Service
New Holland, Pa. | L. H. Brubaker
Lancaster, Pa. | R. S. Weaver
Stevens, Pa. |
| Mann & Grumelli Farm Service
Quarryville, Pa. | L. H. Brubaker
Lititz, Pa. | N. G. Myers & Son
Rheems, Pa. |