

## Washington Notes

### RIVER PROJECT

The House voted by a large margin for the Upper Colorado River project, to cost \$756 million. It will irrigate 132,000 new acres of land, and supplement existing water for almost twice as many more acres.

### SURPLUS COTTON

The Administration will put government-owned surplus cotton on sale at "competitive prices" in an effort to regain for the United States its share of the world cotton market, according to Agriculture Secretary Benson. He acknowledged that the proposal to dispose of some of the country's surpluses had been opposed by the State Department.

### LOBBYING INQUIRY

Eight Senators have been named to a special panel that is to conduct an inquiry into lobbying, campaign contributions and corrupt political practices. The group is evenly divided both as to Party and to its members' votes on the recently-vetoed natural gas bill.

### U. S. MOUNTAINS

New measurements by the U. S. Geological Survey show that Colorado has 54 mountains which tower 14,000 feet or higher, instead of 52 indicated by older surveys. The two additions are Missouri Mountain, 14,067 feet above sealevel, and Huron Mountain. Both are in the Collegiate Range area, near Bena Vista, in central Colorado. Elbert, at 14,431, is still the state's highest mountain.

### JOB RECORD

An estimated total of 75,300,000 Americans held full and part time jobs in 1955 — 3,500,000 more than in 1954 — and the greatest number on record since World War II. Of the 3,500,000 increase in the number of workers who actually were employed part or all of 1955, about two-thirds were women.

### AVERAGE FAMILY

The following picture of the average American family was compiled from Government and independent group figures: The

## All Self-Employed Required To Pay Social Security

Social security for self-employed professional groups brought under the old-age and survivors insurance program as of Jan. 1, 1955, is compulsory, M. S. Gleaton, district manager of the Lancaster social security office, said today.

He was referring to professional engineers, architects, accountants and funeral directors who began to earn social security insurance protection for themselves and their families last year.

Nationwide, about 100,000 persons self-employed in these professions are now covered by the law.

All self-employed professional men and women whose work is covered by social security, whether they operate their businesses as sole owners or in a partnership are required to make a report of their net earnings and pay the social security tax on their earnings for their first taxable year after 1954, Gleaton said.

The report and tax for social security purposes must be filed along with their Federal income tax return which is due April 15, 1956.

The social security tax for any self-employed person in work covered by the law is 3 per cent of net earnings. If net earnings were as much as \$400 in 1955, a report must be made and the tax paid.

Net earnings up to \$4,200 in a year are credited to a social security account and the social security tax on earnings up to that amount must be paid.

average American family now averages 3.5 persons and the husband and wife are about 30 years old. The husband was about 24 when he married, stands 5 feet, 8½ inches tall and weighs 156 pounds. His wife was about 21 when married, is 5 feet, 4½ inches tall and tips the scales at 133.

### LABOR UNION

A detailed analysis indicating that 20 million new members can be organized has been mapped by the merged AFL-CIO. White-collar workers, plus employees in the chemical, oil, textile, paper, wood, furniture, shoe and leather industries, have been tagged as the most hopeful immediate organizing targets.

### ARMY STRENGTH

While the Army Chief of Staff, General Maxwell D. Taylor, recently acknowledged that the Army thought 27 or 28 divisions, instead of the currently provided 19, would be the "optimum," he refused to be drawn into any serious questioning of the Army's strength.

## Luke Wagner Heads Ayshire-Jersey Club

Luke Wenger, R2, Manheim, will be president of the Lancaster County 4-H Ayshire-Jersey Club for the coming year. He was elected at a recent meeting in the Southeastern Pennsylvania Artificial Breeding Coop Building.

Also named were Ned Paes, R1, Strasburg, vice president; Joyce Kreider, R1, Quarryville, secretary; Early Wenger, R3, Manheim, treasurer; Florence Mae Flory, R2, Manheim, news reporter; Joan Paes, R1, Strasburg, song leader; Alva Herr, R1, Holtwood and James Brubaker, R1, Lititz, game leaders.

Named club leaders were Ayshire: Abram K. Flory, R3, Manheim; Milton Brubaker, R1, Lititz, and Everett Kreider, R1, Quarryville, Junior leader, for Ayshires, Abram G. Flory, R3, Manheim, and for Jerseys, Henry Styer, R1, Drumore.

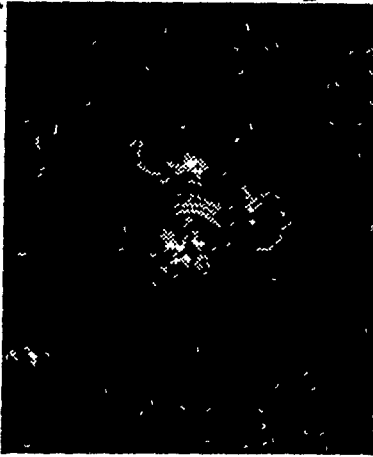
The Bureau of Labor Statistics reported a decline of .1 per cent in the consumer price index from mid-December to mid-January. Very little change in February prices was forecast.

### AUTO-MAKERS' PROFITS

The Ford Motor Company has reported that its net profits for 1955 totaled a record \$437 million. This compared with profits of \$1,189 million, reported by General Motors, and \$100,063,320 by Chrysler Corporation, during the same period.

### TO PROBE CONTRACTS

The Renegotiation Board, which seeks to recover excessive profits on Government contracts, has sent observers to listen in on congressional investigations of the production and profits of fifteen aircraft companies which supply the Air Force and Navy with aircraft.



"HOMEY, ISN'T IT?"—It's the best winter in years for this sea lion, in residence at the Paris, France, zoo. Europe's worst-in-years winter has put a respectable coating of ice on his pool. He's giving the photographer an icy eye from one of the air holes he's punched for his use between trips to the depths.

Subscribe Now

— Charter Offer —

\$1.00 First Year

Ends Soon

## NEW HOLLAND



# SALE!

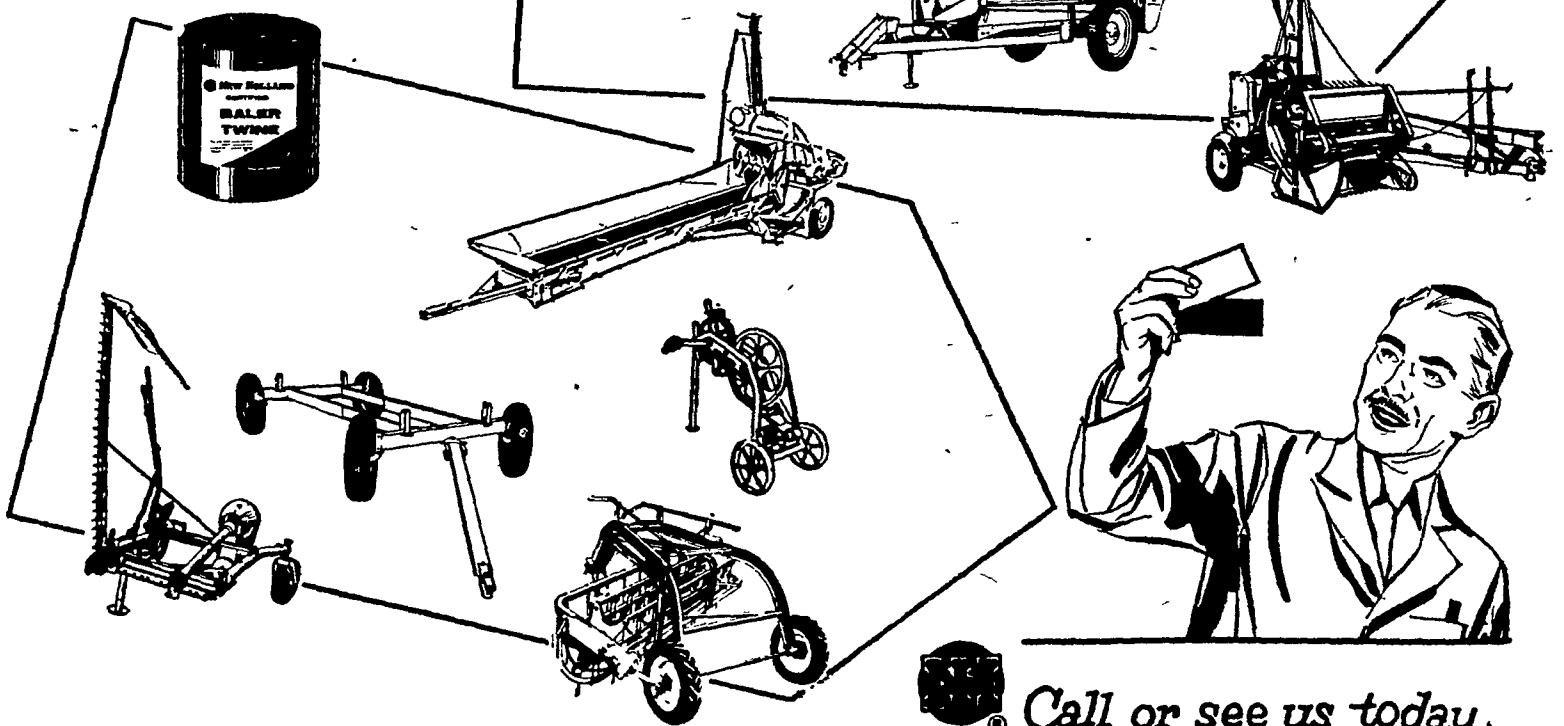
Buy Now And Save —  
On Special Combination Prices

Check these bargains! You'll be amazed at how far your equipment dollar goes at our Twin Ticket Sale. Because right now you can pick up two brand new 1956 New Hollands at a single low price!

MATCH UP ANY RED AND YELLOW TICKETS FOR THE PAIR YOU WANT — AT OUR SPECIAL TWIN TICKET COMBINATION PRICES!

Just come into our showroom and match up any Red Ticket New Holland with your choice of Yellow Ticket Specials. You pick out just the pair you want — and get big double value at the tremendous savings of our special Twin Ticket combination price!

What's more, right now you get extra trade-in value on your used equipment in the Twin Ticket combination you choose. Why not take a minute and call us for free appraisal of your old machinery? Find out how much more you save by trading now on Twin Ticket bargains at our special combination prices.



Call or see us today.

## Your Lancaster Co. New Holland Dealers

### "First in Grassland Farming"