

## Washington Notes

Washington (USDA—The U.S. Department of Agriculture today announced a resale program in certain States for farm-stored loans on 1955 crop corn and wheat under price support.

Under this program, farm-stored corn and wheat under price-support loans may be resealed for another program year. Farmers will also be able to convert purchase agreements on these commodities, now held in farm storage, into price-support loans for extended period Operations of the 1955-crop resale program will be similar to those for previous crops.

### Hord Grain on Farm

Farmers who resale their 1955-crops for the extended loan period will hold the grain on the farm instead of delivering it to the Commodity Credit Corporation at the end of the original loan period. Announcement of the program is being made now in order to give farmers time to plan and construct any additional farm storage facilities needed to make it possible for them to resale their 1955 crops and still have space to handle their 1956 crops in an orderly fashion. To be eligible for the price-support loans, the commodities must be housed in satisfactory storage.

A storage payment in line with Uniform Grain Storage Agreement rates will be paid farmers who resale their 1955 crops.

Farmers who hold their grain until the maturity date for the rescaled 1955-crop grain will receive a full storage payment for entire period. If a farmer redeems his loan prior to maturity, he will receive a storage payment for the period beginning 60 days after the maturity of the regular 1955-crop support program and continuing through the time he keeps the commodity in storage as loan security. This storage payment will be at a daily rate equal to the full storage rate divided by the number of days between "60 days after the 1955 maturity date" and the 1956 maturity date. The interest rate for the extended loans will be 3 1/2 per cent.

### Eligibility Requirements

Eligibility requirements under the 1955-crop resale program will be the same for quality and storage as for the regular 1955 loan operation. In addition, rescaled wheat must be of a quality which will meet the Food and Drug Administration requirements to become effective July 1, 1956, relative to contamination of grain by birds, rodents, insects, and other vermin.

Farmers who desire to resale their grain, or convert purchase agreements into "resale" loans, should make application to their county Agricultural Stabilization and Conservation (ASC) committee during the month before the 1955-crop maturity date.

The resale program for corn and wheat will be available in the following States in areas where ASC State committees determine that there may be a storage problem and that conditions are such that good storable grain can safely be held on the farm for another year.

**Corn** - Loans will be extended to mature on demand but not later than July 31, 1957, in all States except in designated angoumois moth areas.

**Wheat** - Loans will be extended to mature on demand but not later than March 31, 1957, in Arizona, California, Colorado, Idaho, Illinois, Indiana, Iowa, Kansas, Michigan, Minnesota,

Improved methods of detection, such as the Papanicolaou smear, have played an important part in reducing the uterine cancer death rate among women by 40 per cent in the years from 1930 to 1952, the American Cancer Society reports.

### Very Inconsiderate

Doctor — That man owes me over \$200 for services.

Friend — Won't he pay you?

Doctor—Pay me! He won't even worry about it.

Missouri, Montana, Nebraska, New Mexico, New York, North Dakota, Ohio, Oklahoma, Oregon, South Dakota, Texas, Utah, Washington, Wisconsin, and Wyoming.

## 100 Neighbors

### Clear Glick

### Barn Wreckage

One hundred neighbors and friends moved in on the farm of Aaron S. Glick south of Quarryville on Monday morning and within hours cleared up the wreckage of a tobacco barn leveled in the windstorm of Saturday afternoon, February 25.

Announcements were made in at least three churches Sunday morning, Little Britain Presbyterian, Mechanic Grove Church of the Brethren and the Maple Grove Mennonite Church where the Glicks are members. First workers arrived at 7:30 a. m., and by 11 a. m. the walls and roofs were cleared away, leaving the floor and basement for a short afternoon's work.

### Helpers from Maryland

Helpers came from as far away as Maryland, like Mr. and Mrs. Henry Kern. Dinner was served at noon to 70 helpers in the kitchen and serving with Mrs. Glick were Elizabeth Stoltzfus, Miriam Petersheim, Lydia King, Mrs. Herbert Hess, Mrs. Dorothy Kern, Mrs. Margaret H. Aument, Mrs. Leroy S. Lapp, Lena R. Lapp, Susie Lapp, Ada Lapp, and Anna Stoltzfus.

Others present and helping were the Kerns, Paul B. Myer, Gid Stoltzfus, Harry E. Kruche, Frank McCrabb, Elmer Fisher, John Kreider, Elmer Glick, Isaac Lapp, Jr., S. Glick, Gideon Stoltzfus, Harry G. Kreider, Herbert S. Hess, Claude F. Hart, J. Everett Kreider, Melvin R. Stoltzfus, Ivan Glick, Mort Griffin, Cyrus Graeff, Henry Kern, Samuel J. and Carl Roy Lapp, Linford Lapp.

A. L. Sheaffer, S. M. Stoltzfus, Clair Kreider, Fred J. Kreider, Stanley E. Kreider, Lloyd Lefever, George I. Knight, Chester Strubel, Isaac L. Hershey, Robert Graeff, Earl H. Harnish, Carl M. Johnson, Sr., Jacob Beiler, Moses E. Stoltzfus, B. Clair Aument, Irvin Mull, Robert Kreider, L. Mervin Clark, D. K. Fisher, Samuel K. Ringler, Paul E. Lefever, Paul G. Weaver, J. B. Lefever, Joseph S. King, Noah Shirk, Samuel Kaufman, Jr., LeRoy Stumpf.

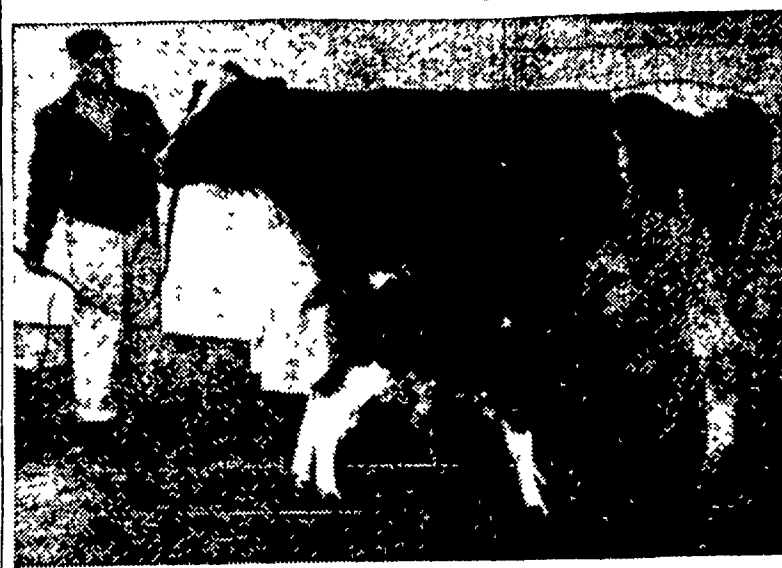
Elmer E. Brubaker, A. Clyde Kreider, James G. Kreider, Sam Summer, Ronald Kerchner, Mason Druck, Jr., John M. Lefever, Glenn Kreider, William Townsley, Sam Kreider, Allan Kreider, Robert Uhrich, Jonathan Lapp, Samuel S. Stoltzfus, Emanuel Nafziger, Hiram Bollinger, Jr., Elam W. Mull, Aaron H. Weaver, Lewis Aument, Harold Redcay, Paul M. Herr, S. S. King, C. S. Petersheim, Harry McComsey, Jason Weaver, Milton Esbenschade, Harvey Risk, Paul Clymer, John Clymer, Allan Dubble and his son Joel Dubble, Sam and John Glick, and Harold DeLong.

Mr. Glick is making plans to replace the barn, and hopes to have the new structure up by June.

Boards were neatly sorted and stacked along fences, machinery lined up for repair, and tobacco ricked up alongside the stone foundation. Frames of some farm equipment were damaged when buried under the debris.

Neighbors brought in six tractors and wagons, another a manure loader and another a large truck to help speed up the job, which was completed in record time.

## 3 Calves — Artificially Inseminated



This cow from the dairy herd of the Ralston Purina Research Farm, Gray Summit, Mo., has had eight calves, — all heifers. Each breeding was by artificial insemination. Her latest heifer calf, pictured above with the cow, weighed 99 lbs at birth. The cow, a grade Holstein raised on the farm, is one of the better producers in the herd. Several of her offspring are taking their places in the milking string and making good production records themselves. Leonard Gildehaus, Purina dairy herdsman, poses with the bovine "mother and daughter of the year."

Pain is not an early symptom of cancer, which often strikes without warning. Doctors can detect early unsuspected cancers in the course of a regular health examination, the best cancer insurance, the American Cancer Society says.

## CLEAN TRUCK WHEELS

Charlottesville, Va. — A most unusual request was made by the City Council recently of truck drivers — that they clean their wheels driving into Charlottesville. Trucks from outlying construction jobs had painted the city pavements with Albemarle county red mud and the city attorney was instructed to prepare an ordinance to make the Council's request enforceable.

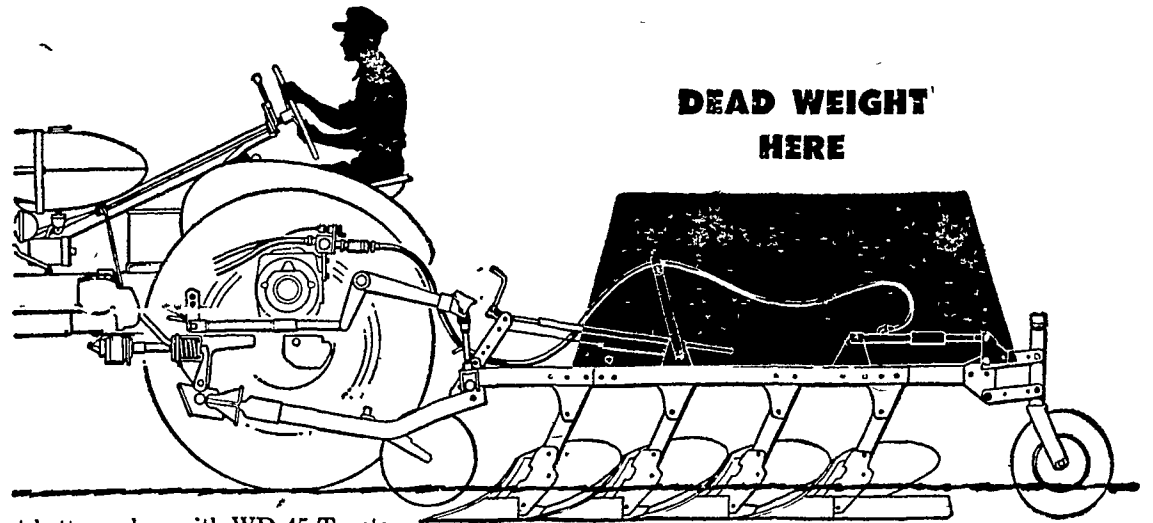
## Subscribe Now

— Charter Offer —

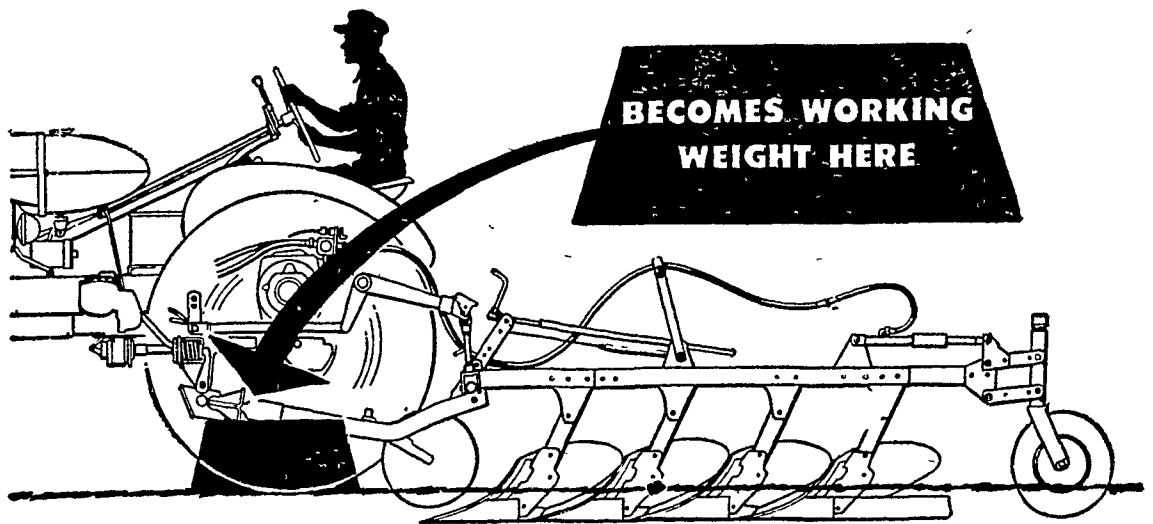
\$1.00 First Year

Ends Soon

## here's what happens with TRACTION BOOSTER



4-bottom plow with WD-45 Tractor



## AUTOMATICALLY, AS NEEDED

- ★ MORE WORK
- ★ LESS DEAD WEIGHT
- ★ LOWER COST

Let us demonstrate ALLIS-CHALMERS ENGINEERING IN ACTION on your farm. Call today.

Your choice of fuels, too, gasoline, L-P gas, diesel.

# ALLIS-CHALMERS

SALES AND SERVICE



N. G. Myers & Son  
Rheems, Pa.

R. S. Weaver  
Stevens, Pa.

Snavelys Farm Service  
New Holland, Pa.

L. H. Brubaker  
Lancaster, Pa.

Mann & Grumelli Farm Service  
Quarryville, Pa.

L. H. Brubaker  
Lititz, Pa.