

## About Your Home

By FRANCES DELL

A new process finishes colored concrete in brick or tile patterns at half the cost of conventional materials. New tools designed for the purpose of impressing fresh, colored concrete, with various patterned surfaces are now being manufactured by a well known California concrete company.

The process makes possible the manufacture of various brick, tile or other patterns on the job. It is the result of four years development work and has been subjected to severest tests.

The tools are constructed of a cast-aluminum alloy, light enough but strong enough to withstand heavy use and obtain the required penetration.

The method of installation is simple and the manufacturer claims that with the use of their tools any experienced cement finisher can create either brick or tile patterns in colored concrete in about the same time it takes to lay gray slab at only a fraction of the cost of the conventional materials. The process can be used for any flat surface and is ideal for patios, swimming pool aprons, interior floors — any place tile or brick would be used. The advantages claimed are quick drying surfaces when wetted and the absence of shrinkage cracks running through the concrete.

Good kitchen lighting cuts fatigue. For good general lighting in most kitchens, you need either three 20-watt, or two 25-watt, shaded fluorescent tubes with glass or louvres, or a 150-watt incandescent lamp in a 12-inch enclosing globe. In addition, you should have shielded ceiling fixtures

with 150-watt standard bulbs or a fluorescent tube over sink and stove.

For each 25 to 30 inches of counter space, a 20-watt fluorescent tube attached to the underside of wall cabinets from the edge to flood the entire work counter without glare.

These standards were reported by Rutgers University.

## Women's Page

(Continued from page eight)

### LEMON SPONGE PIE

One cup granulated sugar  
Three tablespoons flour  
Three tablespoons lemon juice  
Two eggs  
One cup milk  
One tablespoon melted butter  
A few grains of salt  
Mix sugar and flour, add lemon juice, egg yolks, milk, butter and salt. Then fold in stiffly beaten egg whites.

Bake in one crust, about 350 degrees. Remove from oven before too firm, as it will set while it cools.

### WHOLE WHEAT ROLLS

1 cup mashed potatoes  
3-4 cup sugar  
3-4 cup shortening  
1 cup milk  
2 eggs beaten  
1 package of yeast  
5 cups whole wheat flour  
2 cups white flour  
2 teaspoons salt

To mashed potatoes add sugar and beaten egg. Heat milk and shortening. Add to potato mixture. Dissolve yeast in 2 tablespoons of warm water, add to cooled potato mixture. Add flour to which the salt has been added. Put in refrigerator overnight. Next day take out, knead and let rise. Roll dough about 1-3 inch thick, cut with a round cutter. Crease through the center, brush with melted butter and fold double. Let rise about 2 hours until double in bulk. Bake in an oven 425 degrees until well browned about 15 to 20 minutes.

That's about it for this week. Send in your favorite recipe, household hint, gardening tip. Until next week, we'll see you again.

## And Fancies At Society 1 New York Trip

Two trips are on the schedule of the Society of Farm Women, 10, first a trip to the Philadelphia Flower Show March 14, and a June trip to New York City.

Plans were made for these journeys at a meeting in the home of Mrs. Wayne G. Brubaker, Old Harrisburg Pike, Lancaster, recently.

In a talent program by members of the society, Mrs. Loretta Shank, teacher in an Amish school, sang an Amish good morning song in French. Pennsylvania Dutch and English. Skits, recitations and a quiz were also included in the program.

this is your DREAM HOUSE



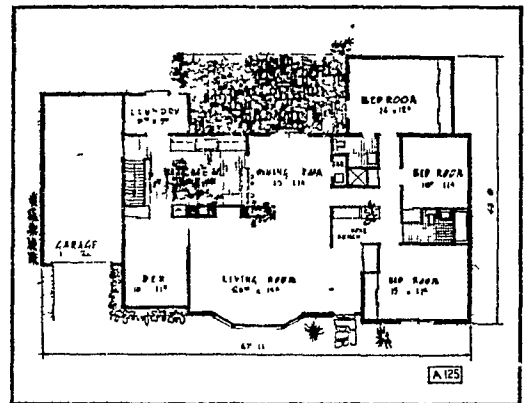
Stuart Furman, Architect

## Sunny and Gay

House No. A-125

CALIFORNIA styling of the most meticulous and luxuriant type is evident throughout this home. Step from the flagstone front terrace into the charming foyer that is separate from, yet serves to accentuate, the magnificent 27 foot expanse of living room. The enormous bow window affords three exposures, and the commanding fireplace dominates the entire inside wall. A sunny den off the living room provides another 10 feet of depth to the main area. Close by, the dining room affords a panoramic view of the outdoors and opens onto your rear patio. The spacious kitchen is the control point of the entire house. Right next to it is the laundry area. The bedroom wing consists of three bedrooms with ample storage space and two modern bathrooms. Other features include a full basement, a recreation room and workshop and a roomy garage.

For the convenience of readers who wish to study this house in greater detail, we have prepared a complete sketch plan which can be obtained by sending 25¢ in coin to Modern Plan Service, Department M, Lincoln Building, Mount Vernon, New York.



Area: 2,506 sq. ft.

Cubage: 25,200 cu. ft.

## In Fashion Now

The most apparent change in the shoe scene is that heels are getting slimmer all the time, even though their heights are not towering. The desire of American women for comfortable, glove-soft shoes on heels they can enjoy wearing has prompted the entire shoe industry to come out with high-fashion styles incorporating all these features.

Colored heels on patent, suede and calf shoes are a Spring fashion note. Many black patent shoes

are being set off by a gold ornament instead of the more expected trim or piping. This gold gleam is going to head into Summer. You will see many white shoes being piped in gold kid or with tiny gold buttons. This is said to be in keeping with the Oriental fashion trend generally. The neutrals in the beige-to-brown family are very popular. Such colors as flax tones, French bread coloring, turtledove and maple are getting a big reaction from style-wise women. Yellow is going to be an important color for late Spring and Summer.

## Foods, Fads On Society 10 June Schedule

Husbands of Farm Society 1 will be entertained April 21 at Zinn's Diner, Ephrata, where Dr. Paul Z. Rummel, on the staff of Millersville State Teachers College, will speak.

On Saturday, April 7, the Society will meet at the home of Mrs. Monroe Hufford, 175 Delp Road, to hear Mrs. Anna DePlanter Bowes discuss "Foods, Fads and Fancies."

Hostess at the Saturday meeting was Miss Rachel Bollinger, R1 Litz. Mrs. Neil Clark, president, spoke on Farm and Home Safety Practices, and Harry Erdman, superintendent of the Hershey Rose Gardens, described displays at the Gardens.

Mrs. Clark emphasized safety rules the farm wife can put into effect as well as the men, along with home safety rules. Mrs. Adrian H. deVink conducted devotions. Mrs. Viola Marvel reported on the recent Lancaster paratyphoid discussion meeting.

A meeting will be held April 4 at the Raub Supply Co. in Lancaster to work on re-covering lamp shades. Mrs. Gay Reidenbaugh, Lintz, will hold an all-day cancer pad making project in her home at a date to be announced later.

### Worth It

She — A penny for your thoughts.  
Sailor — I was thinking of returning to the ship.  
Little Brother — Give him a dollar, sis, its worth it.



## MCCULLOCH Model 47 CHAIN-SAW

Makes any woodcutting job easier and faster. It's a one-man saw for professional logging, pulp cutting, tree surgery; for farm and ranch jobs like construction and clearing land. Model 47 is light weight, operates full power in any position. Six models, gasoline powered, with blades 14" to 36". Come in and see it, try it, buy it. It'll save you time, make you money.

## MAST Saw and Knife Service

605 Marietta Ave. Lancaster Ph. 24291

## FURNACE OIL

By using TEXACO FURNACE OIL you can always

Count On A Warm Home

CALL US FOR QUICK SERVICE

## Garber Oil Company

MOUNT JOY PHONE 3-9331 PENNA.

## 50 Farm Equipment Manufacturers CAN'T BE WRONG IN SPECIFYING WISCONSIN HEAVY-DUTY Air-Cooled ENGINES

Yes, 50 or more manufacturers of power operated farm equipment specify Wisconsin Air-Cooled Engines... as power units on balers, hay choppers, forage harvesters, combines, conveyors, sprayers, pumps, garden tractors, lawn mowers, and many other types of equipment. It's a never equalled record! More farm machines are powered by Wisconsin Air-Cooled Engines than any other make of engine. Ample proof why a compact, portable Wisconsin is your best buy for power chores... 2 to 30 hp., 4 cycle single cylinder, 2-cylinder and V type 4 cylinder engines.

## BART'S Repair & Service

1952 Landis Valley Rd. Lancaster Ph. 21568

## LOGAN'S CHICKS

Logan Dominant White Cornish Cockerels for producing famous Logan Cornish Crosses. For most efficient meat production: Cornish Crosses, White Rocks, Delaware Crosses, Silver Crosses.

For High Egg Production: Demme Leghorns from Candidate Matings or Mt. Hope Leghorns for White eggs. Logan famous Sex Links, Logan Whites, or R. I. Reds for brown eggs.

Pa.-U.S. Approved Pullorum Typhoid Clean Brand New Catalog available

L. L. LOGAN, BOX L, Kennett Square, Pa.

A. H. BURKHOLDER JOHN D. GRAHAM  
TELEPHONE 175 TELEPHONE 370-R4

## BURKHOLDER & GRAHAM

ASPHALT PAVING AND EXCAVATING

TELEPHONE 109-R-2 QUARRYVILLE, PA.