

Women's Page

(Continued from page 6)

ing dish and cover with sauce. Bake uncovered in a moderate oven (350) until fish flakes easily when tested with a fork. Garnish and serve hot.

LACY RICE PANCAKES

One cup milk
One cup rice, cooked
One-half teaspoon salt
One tablespoon melted butter
Two egg yolks, well beaten
Three tablespoons flour
Two egg whites, beaten stiff
Pour rice over milk and salt. Add egg yolks, butter and flour. Fold in egg whites. Drop mixture, a tablespoon at a time, onto a greased griddle. Cook on one side until puffed full of bubbles, then turn to other side. Serve with butter and syrup.

These rice cakes are like crepe suzettes and can be made very small. Spread with butter, maple syrup and a tablespoon of thick cream — and serve in cereal bowls.

CORN MEAL CHEESE SQUARES

One cup corn meal
Four cups milk
One teaspoon salt
One and one-half cups grated American cheese
Add corn meal gradually to scalded milk in the top of double boiler. Cook until thickened, stirring constantly. Continue cooking over low heat about 45 minutes. Add salt, and grated cheese, cook only until cheese is melted.

Turn the mixture into a waxed paper lined, buttered pan. 8 inches square. When thoroughly chilled, cut into 2½ to 3 inch squares. Add 2 tablespoons butter to skillet, place corn meal cheese squares in pan; heat, turning squares to brown lightly. Top each with Spanish Creole Sauce.

Farm Women 14 Meet March 14 At Esbenshades

The next meeting of the Society of Farm Women 14 will be at the home of Mrs. Robert Esbenshade, R1 Ronks, with a program March 14 featuring a plant and food sale.

The Society met Feb. 13 at the home of Mrs. Mervin Denlinger, R1 Ronks, and the program featured a book review by Eleanor Harsh from the Lancaster County Bookmobile.

SPANISH CREOLE SAUCE:

Melt 4 tablespoons butter, add 2 onions which have been sliced and 1 green pepper, chopped. Cook until lightly browned. Add 2 cups canned tomatoes, 1 teaspoon salt and ½ teaspoon paprika and cook slowly until vegetables are tender. Serve hot over corn meal cheese squares.

SOUR CREAM FROSTING

One cup light brown sugar
Four tablespoons sour cream
One teaspoon vanilla
Combine brown sugar and cream and cook to soft ball stage (238 F.) Remove from heat, add vanilla, and beat until cool. If frosting hardens too fast, add a little more sour cream.

Keep those letters coming — your favorite recipe, your household hint, gardening tips. Spring's coming, and it will be time to plant again. Let's have your flower bed hints. Until next week, when we'll see you again.

Quite Clear

Having received from his tailor a bill and a note reading, "Please remit by return—51st notice Stoney Broke replied: "Dear Sir, —I do not remember ordering a suit such as you mention. If I did order it you certainly never made it for me. If you did make it I never got it. Furthermore, if I got it I must have paid for it. And if I didn't, I can't."

Farm Calendar

(If you wish your Coming Events listed in these columns, write a card or letter to LANCASTER FARMING, Quarryville, Pa. Be sure to include name of sender.—Editor).

MARCH

March 3—Second Annual Banquet, Lancaster County Senior Extension Club, 6.30 p. m. Hostetter's Banquet Hall, Mt. Joy.
March 3—Society of Farm Women 6, home of Mrs. Milton Eberly, R1 Elizabethtown, 2 p. m.

March 5—New Holland Community 4-H Club, 7.30 p. m., New Holland Bank.

March 5—State beaver season ends.

March 5—Free Dealers and Millers' Short Course, Pennsylvania U.

March 7—Potato Growers' Institute, Potato City (near Coudersport), Pa.

March 10—Society of Farm Women 13 entertains Society 4, Farm Bureau Building, Lancaster.

March 13—Farm Women 22, auction of homemade materials, home of Mrs. Eugene Bare, R1 Bird-in-Hand.

March 14—Society of Farm Women 14, home of Mrs. Robert Esbenshade, R1 Ronks.

March 14—Farm Women 9 and 15 attend Philadelphia Flower Show.

March 14—Farm Women 22, visit Lancaster County Home.

March 15—Lancaster County Poultry Association Banquet, 7 p. m., Hostetter's Banquet Hall, Mount Joy.

March 17—Farm Women 18 entertain Farm Women 16, 1.00 p. m. luncheon meeting, Farm Bureau Building, Lancaster.

March 17—Farm Women 9, food sale, Mrs. Jeanne Breneman, R1 Conestoga, hostess.

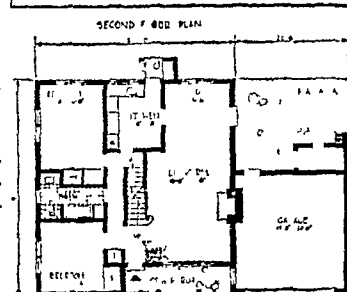
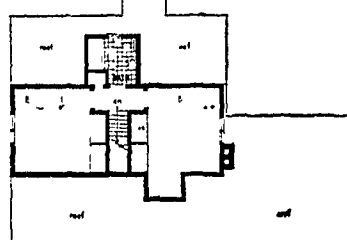
March 17—Farm Women 3, Brickerville Fire Hall, Mrs. Charles Weichter, Hopeland, hostess.

Accent on the Traditional



Traditional design, as shown in this house from the pages of SMALL HOMES GUIDE magazine, is still much in demand. Architect Paul T. Haagen has planned an adequate two-bedroom home, then has given a high pitch to the gable roof, making possible two more bedrooms and a bath upstairs. A front dormer can be added (shown on floor plan but not on elevation) to give extra light to the smaller upstairs bedroom if desired. The attached garage forms a sheltered play yard.

First floor area of this home is 1,349 sq. ft. Information on blueprints and their cost can be obtained by writing to the magazine, SMALL HOMES GUIDE, Dept 1682, 621 N. Dearborn Street, Chicago 10, Ill.



tess, Speakers—Louis and Myrtle Tremblay, Movies—"It's Spring"

March 21—Farm Women 15, luncheon, Middle Octorara Presbyterian Church, Mrs. George Reinhart, chairman.

March 24—Farm Women 12, Mrs. Estella Mower, hostess, Highville.

March 27—Farm Women 12, Cinerama Holiday, Philadelphia, Mrs. Roy Eshelman, chairman.

March 31—Society of Farm Women 4 hostesses to Society 21, Mountville Civic Center.

APRIL

April 1—Sacred Concert, Memorial Methodist Choir, Quarryville, 7.45 p. m.

April 3—County Farm Women's Society Executive Board, 2 p. m., home of Mrs. Henry Reist, R1 Mount Joy.

MAY

May 7-10 — Pennsylvania Guernsey Association host to 79th Annual Meeting American Guernsey Cattle Club, Philadelphia.

JUNE

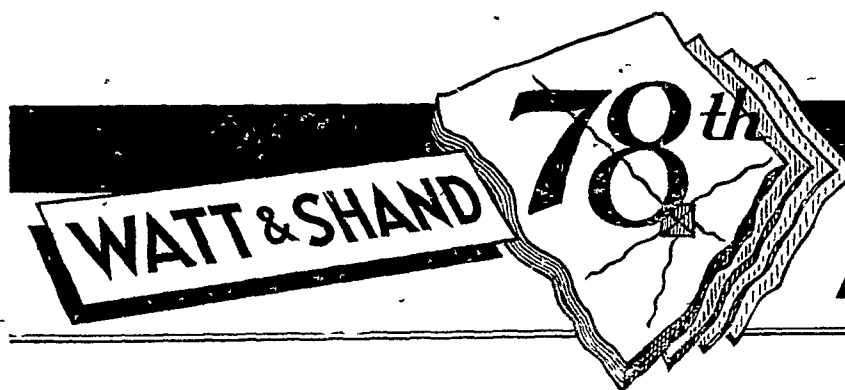
June 9—Annual Lancaster County Poultry Association Barbecue, Lititz.

Correct

Fishing is less cruel than hunting. The amateur never has to explain that he thought his companion was a fish.—The San Francisco Chronicle

IT'S HERE! BIGGER THAN EVER!

LANCASTER'S ONCE-A-YEAR SAVINGS CELEBRATION!



Growing with Lancaster since 1878

ANNIVERSARY SALE

EXCITING PRIZES

★ Two-week all expense trip to Nassau for two, open to all adults over 18, other than Watt & Shand employees and members of their families. Register on our Second Floor.

★ Wall-to-Wall Carpet for any room in your home. The winner may choose from Wiltons, Twists, Chenilles or Axminsters. Completely installed over heavy foam rubber cushion. Register on our Fourth Floor. No need to make any purchase.

The sale with a tradition of greatness behind it for Great Selections! Great Values! Great Savings! Here you will find thousands of dollars worth of brand new merchandise for the home and all the members of the family, offered at record-breaking prices. Don't miss any of our five floors. There are surprises waiting for you in every department.

Buy for your immediate needs and for the coming seasons. You'll be proud of your purchases and the money you saved! Store closed on Mondays as usual. open Friday nights till 9. Other days, 9 to 5.30.

POSITIVELY ENDS SATURDAY, MARCH 10

WATT & SHAND ★ LANCASTER, PA.