

# Lancaster Farming

Vol. 1, No. 18

Quarryville, Pa., Friday, March 2, 1956

\$2 Per Year

## Windstorms Rake County; Losses High

Severe wind, carried east by terrific tornadoes that spread ruin in the area of St. Louis, Mo., roared through Lancaster County and other sections of the Commonwealth Saturday evening, leaving behind damage in the State that may run into millions. Rain ranged from 35 to 65 of an inch in the county.

Telephone and electric service were curtailed in many sections. Farms were especially hard hit. Down in the south end of the County, winds shoved a 90-by-40 foot tobacco shed off its foundation, 25 feet against a tile silo on the farm of Aaron S. Glick, R2 Quarryville.

Elsewhere the story was much the same, telephone wires downed, shingles torn and scattered, plate windows broken in cities, telephone poles snapped and sagging, roofs blown off.

### Follow Heavy Rain

Mr. Glick reported that the winds struck around 5:15 p. m. Saturday, just after a lashing rain poured down, stopped and after skies had cleared. Two acres of tobacco were stored in the basement, and indications are it is all right, but the bulk of Mr. Glick's farm machinery — two tractors, planters, cultivators, and other equipment — were buried in the debris.

Had the silo not stopped the tobacco barn's movement east, Mr. Glick believes, other buildings may have been destroyed too. Although he carried insurance on the building, it is estimated it would take \$11,000 to replace the barn with one 30-

(Continued on page three)

## Dr. Robertson Elected Again By Poultrymen

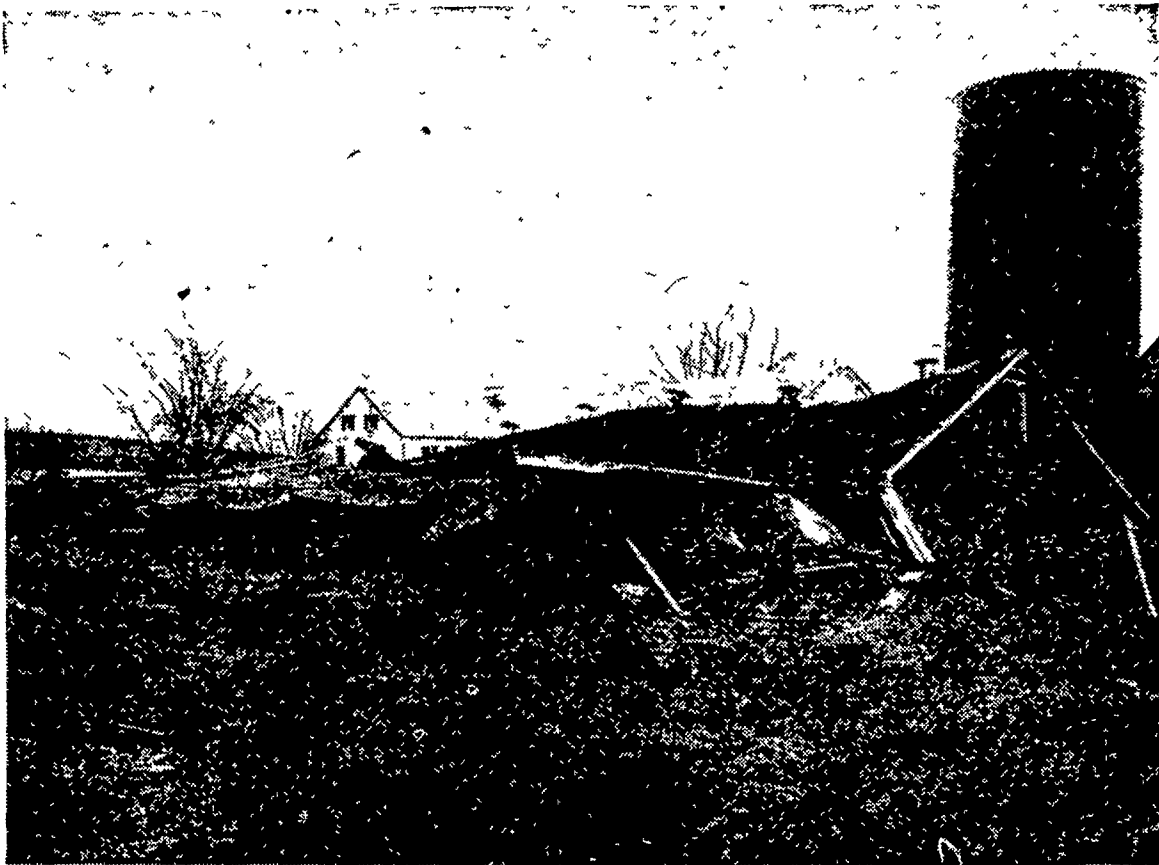
Lancaster County Poultry Association directors have again named Dr. E. I. Robertson to a second term as president. His naming was this week in a directors' meeting at the Sexchuck Co., East Petersburg.

Also reelected was the entire slate of officers, J. R. Greider, Elizabethtown, vice president; Lewis L. Mortensen, East Petersburg, secretary, and L. Howard Martin, R2 Lancaster, treasurer.

Committee chairman will be Mr. Greider, in charge of memberships; Mary Myers, Lampeter, tour, and Levi H. Brubaker, Rohrerstown, program.

Officials believe that by retaining the present staff, work on the proposed Poultry Center can progress more rapidly and efficiently. At the same time, they made plans for the annual barbecue June 9, to be held this year at Lititz.

## Winds Level Tobacco Shed



Straight winds Saturday evening wrecked havoc on the farm of Aaron S. Glick, a mile or so south of Quarryville. Shown above is a tobacco shed that was moved 25 feet east to rest against a tile silo. When the structure collapsed, many items of farm machinery were buried by debris.

Damage from this storm was estimated in the millions of dollars in Pennsylvania. High winds — up to 80 miles an hour — followed a calm period that same after a heavy downpour of rain (Lancaster Farming Staff Photo)

## Numbers of Dairymen Off, Yields Higher

By ERNEST J. NEILL

In the last five years, the number of Pennsylvania dairymen has dropped 25 per cent, yet there are about the same number of cows being milked, producing 30 per cent more milk than they did five years ago.

This was but one of several interesting items given some 350 Lancaster County dairymen and friends Wednesday at the Lancaster County Dairy Day in the Guernsey Sale Pavilion, Lincoln Highway East, Lancaster.

Offering this information was Joe Nageotte, extension dairy specialist from the Pennsylvania State University, speaking on "Efficient Dairy Feeding."

### Home Raised Grain Cheapest

"Simple, home raised grains and cheapest commercial supplements (proteins) are best," he told, pointing out radical changes that have come about in dairy feeding the past few years. "We're moving away from a grain feeding program to a roughage-feeding plan, supplemented by grain. And this is boosting milk production. Roughage has more feeding value than many realize," he emphasized.

Quite a murmur and applause rang through the audience when Lancaster County Agricultural Agent M. M. Smith relayed the message that President Eisenhower announced he would run again.

"There is a great change in pastures, more grass is being produced per acre than we believed possible, yet our cows waste it," Mr. Nageotte continued. "Use systematic grazing, strip or ration grazing — it's 2,000 years old in Europe — by using electric fence," he advised.

Dr. H. A. Milo, director of the Bureau of Animal Industry, from the Pennsylvania Department of Agriculture, reviewed "Progress

(Continued on Page Three)

## Fitz-Roy Named New Baltimore Yards President

Frank G. Fitz-Roy has been named president of the Union Stock Yards, Baltimore, it was announced this week upon his resignation as supervisor of the Lancaster District Office, Packers and Stock Yards Branch, United States Department of Agriculture.

Mr. Fitz-Roy, who has been with the USDA 30 years, began his career at National Stock Yards, St. Louis, moving later to USDA market offices in Los Angeles, Omaha, Wichita, and New York City before coming to Lancaster Feb. 8, 1955, when the Lancaster Yards USDA office was opened.

Mr. Fitz-Roy will succeed Lawrence R. Hatter, whose resignation was effective March 1.

As yet, no successor has been named to the position he vacates at the Lancaster market, which supervises livestock marketing in the 11 northeastern states.

## Calvary Fellowship Meeting Last Night

The men's dinner meeting of the Calvary Fellowship was held last night at Hostetter's Banquet Hall, Mount Joy. The Rev. D. S. Clark, U.S. director of the HCJB, was speaker.

## Two-Price Wheat Favored By Grange

A two-price plan for wheat involving domestic and export prices was favored in a motion put on record this week by the Fulton Grange, meeting at Oakryn Hall, State House Bill 1802, giving the Secretary of Labor authority to fix price of labor on contract jobs over \$200,000, was also opposed.

Master Charles G. McSparran reported construction will soon start on the Grange Hall addition. A spelling bee was conducted by Miss Mabel Brabson, lecturer.

## JayCeas Name Outstanding Young Farmer

Lancaster County's Outstanding Young Farmer of 1955 will be honored at a special awards dinner at the Stevens House in Lancaster at 6:30 p. m. Friday, according to Irvan Huber, chairman of the committee conducting the program for the Lancaster Junior Chamber of Commerce.

Winner of the local program will be eligible for the Pennsylvania and the National Award which is being sponsored jointly by the United States Junior Chamber of Commerce and the National Petroleum Institute Committee on Agriculture.

The Lancaster JayCeas will present an all-expense free trip to the National Awards program in Pittsburgh, April 11 and 12, to the local winner. He will also receive several cash prizes donated by local merchants.

The five local entries in this first annual award are: Stanley E. Kreider, Drumore; Roy H. Book, R1, Roaks; J. Everett Kreider, and Robert C. Groff, R3, Quarryville, and Raymond F. Witmer, R1, Willow Street.

## Benson Replies To See It Now; "Not on Rocks"

WASHINGTON — Anyone who claims farmers are headed for a depression simply are not telling the truth, Secretary of Agriculture Ezra Taft Benson said on a CBS television program in reply to Edward R. Murrow's recent television program, "See It Now, a Crisis of Abundance."

This program, the Secretary asserted, gives a "somewhat distorted picture of the American farm situation," and he urged his audience to back the administration's flexible farm price support program, making wishes known through local Congressmen.

American agriculture is not on the rocks, it is not depression-bound, Mr. Benson declared. "Whoever says it is is rendering the cause of the farmer a disservice and it is simply not telling the truth." "There is no problem or no crisis of abundance," it's "an imbalance between supply and demand — a critical cost-price squeeze."

Unsound programs his office inherited are responsible for farm problems and surpluses today, the Secretary told.

Two others have been offered time by CBS to air their views on the farm situation, Sen. Clinton P. Anderson (Dem.-N. M.), formerly Democratic secretary of agriculture under President Truman, and an opponent of rigid high price supports, and to Sen. Hubert H. Humphrey (Dem.-Minn.).

### MINNICH REELECTED

Graybill G. Minnich, R3 Lititz, has been elected to his 16th term as president of the Lancaster County Production Credit Association.

SAMPLE COPY

See—SPECIAL OFFER—Page 11