

## Turkey Growers Fewer; Flock Size Increases, Purina Friends Advised

By LF Staff Reporter

PALMYRA, Pa. — Turkeys came of age during World War II and popularity of this meat has grown by leaps and bounds since that time, 250 Ralston Purina dealers and friends were told at a meeting in the American Legion Home here Thursday.

Today there are fewer growers, yet flock size today averages more than double the numbers in 1945, the southeastern Pennsylvania audience was told.

Emphasis was placed on 1, good breeding, 2, sound management, 3, careful sanitation, and 4, good feeding. It takes two pounds of feed to produce one pound of gain in a poult, three pounds of feed for the same gain in one eight weeks old. The older the bird is, the less efficient he is in converting feed into meat. Birds 20 to 24 weeks take eight pounds of feed to produce one pound of gain.

### Opportunities in Turkeys

There are opportunities in the turkey business today, for the average American today consumes five pounds of turkey each year, 23 pounds of poultry, and 175 pound of beef, but at present rates, the turkey consumption will grow and grow.

Emphasis was placed heavily on management. Growers should strive to increase livability, and to make better conversion of feed. During the meeting a film strip was shown of the turkey operations on the Norman Fries Farm, near Belleville, Ill., just outside St. Louis, Mo., headquarters of Ralston Purina. Mr. Fries has established a record that is enviable — 98.6 per cent livability.

Comparing 1945 with the present, and with Mr. Fries' record, ten years ago it took five or six pounds of feed to produce one pound of meat. Livability of 80 per cent was considered about tops. While the average flock doubled in size, the number of growers was cut 25 to 27 per cent in the past ten years.

Among those attending were H. C. Weaver, district sales supervisor, Dr. Phil Vardiman, veterinarian in the Ralston Purina pathology laboratory from St. Louis; Hollis Humphrey, manager of Poultry Fattening Chows for the Eastern Region, and Tom Barnidge, manager of film production in sales promotion.

### Talk On Disease Control

Dr. Vardiman gave an interesting talk with illustrations on disease control. He emphasized the importance of getting the whole story on disease outbreak. Company laboratories, and, as in Pennsylvania, state laboratories are available for quick pathological examinations. In such cases, where disease strikes, growers are urged to submit six live specimens if they can. Dr. Vardiman emphasized, "If you are getting good service locally on diagnosis, continue using the local service."

What percentage of turkey losses in the nation are the result of disease? Dr. Vardiman answered 58 per cent of losses can be attributed to disease, 42 per cent to management — or lack of it.

Among those in the management bracket were lack of feeding space, overcrowding, picking, chilling, cannibalism, suffocation and overheating.

"You can control management losses, but you need help to control infectious diseases," he explained.

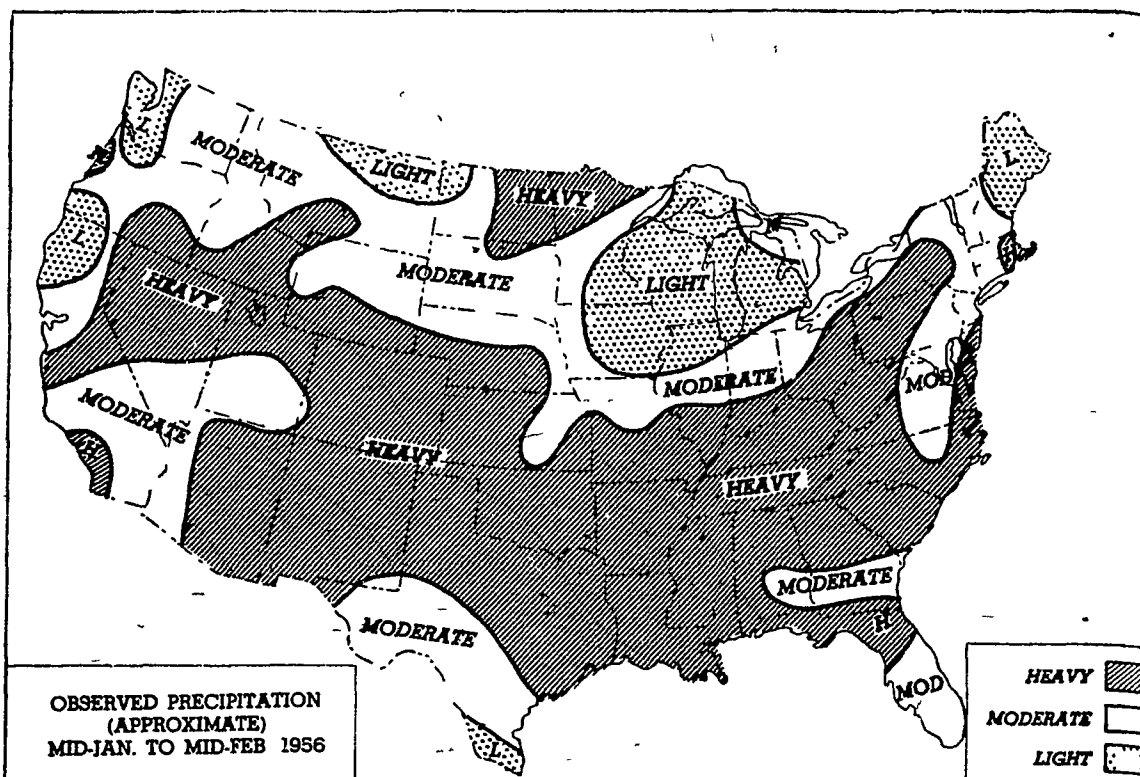
### Luncheon Features Turkey

Others representing the company were G. R. Richardson, manager of the Pennsylvania mostly steady this week. Bulk good and choice wooled slaughter lambs \$19.00-21.50 a few choice 80-90-lb weights to \$22.00. Utility and low good brought \$15.00-18.50. A small lot 65-lb winter new-crop lambs brought \$24.00. Division, Harrisburg; and A. E. Williams, district sales manager, Doylestown.

The film on Mr. Fries' operation followed the entire 1955 operations from the time poult were marketed. The Purina program in both feeding and sanitation was stressed. A new 16 mm film, "Behind the Checkboard Bag," took the guests through the feed processing, from securing ingredients all over the world to micro-mixing.

At noon, a bounteous luncheon — featuring roast turkey, of course — was served in the two dining rooms of the Legion club.

## Preceipitation — Preceding 30 Days



This chart shows the general nature of the total precipitation which fell during the preceding 30 days. Precipitation is expressed in three classes: light, moderate, and heavy, and the precipitation amounts which determine these classes are obtain-

ed from an analysis of many years of record at many stations. Like temperature classes, the numerical ranges, varying from place to place and month to month, are given on page 4 of the Outlook issued one month ago.

Miss Ruth K. Kimble, Lancaster County home economist, addressed a meeting of the Middle Creek Homemakers Club at the home of Mrs. Daniel A. Brubaker, Ephrata R1, Tuesday.

### CHICK PRODUCTION UP

Pennsylvania chick production in January struck an all-time record of 7,603,000, up 46 per cent from the Jan., 1955 hatch, and

considerably above the previous record of 7,200,000 in Jan., 1954. A near-record hatch is indicated for February. For the United States, a record was rung up too with a total near 150 millions.

# When You Buy A Tractor

## In 1956

## Be Sure It Has . . .

### 1

#### Automatic

#### TRACTION BOOSTER System

Changes a dragging load to a rolling load to increase traction on rear wheels automatically, as needed.

### 2

#### SNAP - COUPLER Hitch

Makes implement hookup minute quick.

SNAP COUPLER AND TRACTION BOOSTER ARE

ALLIS-CHALMERS TRADEMARKS

### 3

#### Power - Shift Rear Wheels

Spaces wheel width to match crop or job requirements with engine power.

### 4

#### 2 - Clutch Power Control

Lets PTO deliver full power to harvesting machinery as tractor stops or eases over rough spots.

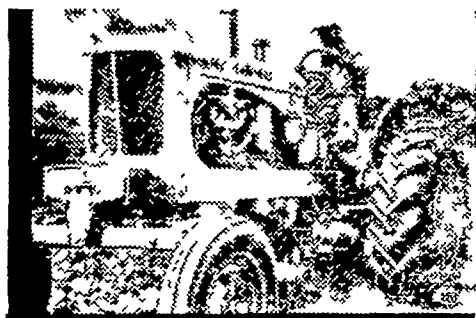
## And . . . 4 - PLOW POWER

Add 'em all up and you get . . .

## WD-45

## ALLIS-CHALMERS

## SALES AND SERVICE



N. G. Myers & Son

Rheems, Pa.

L. H. Brubaker

Lancaster, Pa.

R. S. Weaver

Stevens, Pa.

Mann & Grumelli Farm Service

Quarryville, Pa.

Snavelys Farm Service

New Holland, Pa.

L. H. Brubaker

Lititz, Pa.

## Robert Kreider New 4-H Tractor Chief

Robert Kreider, son of Mr. and Mrs. Clyde Kreider, R1 Quarryville, will serve during the coming year as president of the Southern Lancaster County 4-H Tractor Club.

He was elected at a meeting this week at the Conestoga Farm Service in Quarryville. Other officers elected were Donald Heir, vice president; Glenn Aument, secretary; Eike Grevel, International Farm Youth Exchange student from Germany, treasurer, and John Wagner, news reporter.

This is Mr. Kreider's first year as a member. Nineteen attended.