

State Tobacco Experiment Farm

(Continued from Page One)

formal committee and secured enough local backing to carry the program through.

County Role in Research

The history of Lancaster county's role in tobacco field research dates back many years. Expansion to 88 acres—of which 75 are tillable—will permit for the first time specific research on the area's climatic and soil-type conditions. Findings can be pinpointed.

Pennsylvania State advised Lancaster Farming by phone that attorneys hope to have the title shifted theoretically to the University by Jan. 1, with possession of buildings and facilities possibly by July 1. Land will be available for spring planting after April 1.

The first agricultural research in Pennsylvania was a special state appropriation in 1893 for investigation of Commonwealth tobacco growers' problems. For many years tobacco funds were the only state monies available for research in Pennsylvania.

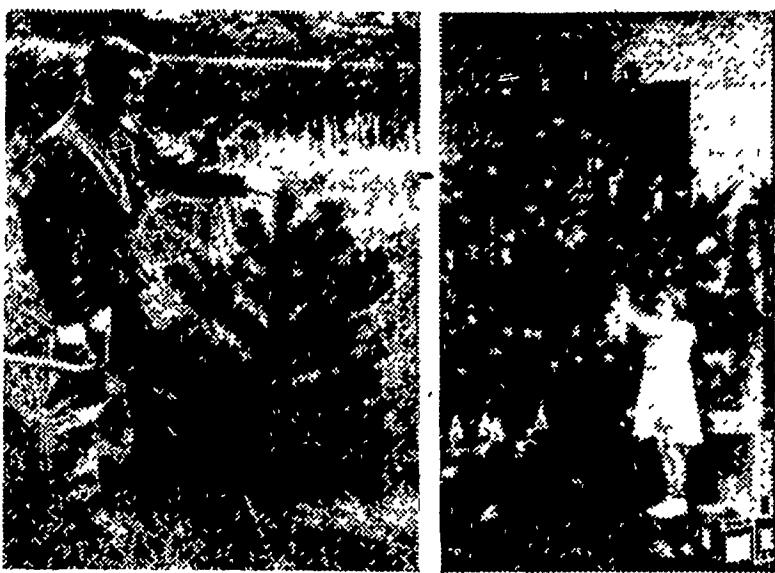
Other Farms Leased Earlier

Landisville was the first in which the State had title (1952). Prior to World War I and through 1952, twenty-two acres were leased in the Roseville area on the M. G. Esbenshade farm. Ten years before that a 20-acre LeFever Farm in the same area was used, and before the LeFever Farm in the same area was used, and before the LeFever Farm, the Hibshman Farms, on which was developed the noted Swarr Hibshman strain.

For 40 years the state had to lease small acreages for tobacco research, but new problems arose. With the new 88 acres, Dr. Farrell advised, other crop research will be available.

T. R. Terrell, agronomist, will continue in charge of the expanded station.

Shearing Improves Christmas Tree



Few Christmas trees in plantations or in the woods become highly desirable without training and not all are high class under the best of care. Scotch pines, shown above, at the Pennsylvania State University Agricultural Experiment Station have been found to require two or three shearings (prunings of growing tips) to produce the dense foliage desired by homemakers. Scotch, along with most pines, must be sheared in summer, but spruce may be sheared at any season.

TOBACCO ESTIMATE

This year's crop of cigar leaf tobacco in Pennsylvania is estimated at 40,815,000 pounds. Production in 1954 came to 43,416,000 pounds and the 10-year average is 48,472,000 pounds.

September weather was good for growth of late-planted tobacco and maturity and cutting of earlier set acreages. Late set tobacco had the best growth, the same as last year, but rust or wildfire hit some fields rather hard. Generally, the crop is reported to be curing well with only a little pole burn.

PETERBOROUGH, N. H.

The 1956 National Junior Guernsey Show will be held at Waterloo, Iowa next year on Oct. 2, according to the American Guernsey Cattle Club.

As usual, the show will be held in conjunction with the National Dairy Cattle Congress. The American Guernsey Cattle Club is again offering \$800 in prize money, plus special ribbons and trophies.

Registered Guernsey females regularly enrolled in project work and owned by 4-H members are eligible. Each State is allowed a combined total of six entries, to be selected by the State Guernsey Breeders Associations in cooperation with 4-H and FFA authorities.

Complete Show rules are available from the American Guernsey Cattle Club, Peterborough, N. H.

Harold Harsh, Leacock, President of Baby Beef Club at New Holland

Harold Harsh, Leacock, has been elected president of the New Holland 4-H Baby Beef Club. The organizational meeting was held in the New Holland Bank. Others elected were: John Groff, R1 Bareville, vice president; James Wolgemuth, R1 Bareville, secretary; Lester Groff, R1 Lancaster, treasurer.

Verna Lapp, R1 Ronks, was named song leader; Betty Good, R1 East Earl and Donald Groff, R1 Bareville, game leaders; David Lapp, R1 Bareville, news reporter.

Mr. Wolgemuth will be host at his home to the next meeting of the club. Meeting date has been set as the third Friday of each month. At the next meeting, a rope-halter making demonstration will be given.

Sadsbury Township has been authorized to conduct blood tests of cattle in line with the Pennsylvania brucellosis eradication program. This makes ten townships now authorized in the county, and three others are awaiting state approval after enrolling at least 90 per cent of herd owners for area tests.

Township committees are urged to renew efforts to enroll the remaining 28 townships in the county for Bang's disease tests.

24-Hour Service

—on—

Learners' Permits

EDWARD G. WILSON

Notary Public

16 S. Lime St. Lancaster, Pa.

FEBRUARY DRAFT CALL

A draft call for 3,000 in February has been issued by the Army, the lowest call since Selective Service was resumed after the Korean war broke out. The January call has also been reduced to 6,000. At the end of October, Army strength was 1,105,062, and is expected to level off by June 30 to 1,027,000.



Cuts Production Costs!

Broilers grow faster, finish out better and earn premium prices with Farm Bureau BROILERMAKER. A highly concentrated ration, it cuts feeding costs because you feed less of it. You'll have fewer culls, less waste and a better finished flock. Try it... see the results!

Contains Vitamin B12 and Antibiotic Supplements

Available in Bags or Bulk

Farm Bureau

Dillerville Rd., - Lanc.

BRANCHES:

Manheim - New Holland
Quarryville

West Willow Farmers Association

Custom Grinding and Mixing W-W-F Poultry Feeds Ultra-Lifed Formulas

West Willow, Pa.

Phone Lancaster 45019

Authorized Dealer

FOR—

Massey Harris
Ferguson
New Holland
Brillion
Terramatic Barn Cleaners
and Other Lines.

CHECK OUR BUYS IN USED EQUIPMENT

Serving Chester County and Southern

Lancaster County Over 16 Years

Now Is The Time To Have That Baler, Tractor or Combine Reconditioned by Factory Trained Personnel

GENUINE REPAIR PARTS & SERVICE

S. G. LEWIS & SON

West Grove, Pa. Phone West Grove 2214

Or Kirkwood 32R4

For Your Local Representative

