

Hogs 50 Lower; Few Here Score \$13.50 Wednesday

LANCASTER
LIVESTOCK MARKET

Wednesday to Wednesday Review

By David S. Lorenson, Reporter
USDA Market News Bureau

Cattle Three days 3904, week ago 3469 Compared with last Wednesday Slaughter steers high choice and prime 1100 lbs and lighter steady to weak, other weights and grades 50 to 75c lower most decline on shortfed good and low choice averaging 1200 lbs and over Heifers scarce steady to 25c lower Cows moderately active mostly fully steady Bulls steady to 25c higher, most advance on utility Stockers and feeders slow, mostly steady Bulk choice fed steers \$20.00-21.50, a few lots high choice and prime \$21.50-22.00, two loads 1000-lb prime yearling steers \$24.25 Good largely \$18.00-19.25, some commercial \$15.50-17.00

Commercial and good heifers \$14.50-17.50 Utility and commercial cows \$11.00-12.75, canners sley, 700 Red Vantress to

and cutters \$8.00-11.75. Utility and commercial bulls \$14.50-17.50, cutters down to \$13.50 Numerous loads medium and good 600-900 lb stocker and feeder steers \$16.00-18.25 Several lots comon & medium \$13.75-15.50, small lot chc. cc 625 lb feeder steers \$21.50, load 858 lb choice feeder steers \$20.75; load choice 630 lb steers \$20.50 Calves. Vealers strong to 50c higher, some prime \$1.00 or more higher. Bulk good and choice \$23.00-27.00; high choice & prime \$27.50-32.00 00, odd head to \$34.00 Utility and commercial \$14.00-21.50 Receipts 1093, week ago 890.

Hogs: 1202 week ago 767 Barrows and gifts mostly 50c lower than last Wednesday sows 25-50c lower. Bulk barrows and gifts U S mixed 1-3, 180-240 lbs Wednesday, \$12.50-13.00, several small lots mostly 1 and 2 to local small killers, 180-220 lbs \$13.50, weights 240-270 lbs \$12.00-12.50

Sheep 436, week ago 420. Slaughter lambs steady to weak compared with last week's close. Bulk good and choice wooled slaughter lambs \$17.50-20.50; a few choice and prime 80-85 lbs \$20.75; Utility and low good \$14.00-17.00

PHILADELPHIA POULTRY (By USDA)

PHILADELPHIA Dec 7 — Market unsettled Supplies of nearly all classes were in excess of the light and very selective demand. Few lots barred rock pullets 33 - Large White Rock caponettes 28-30 No 2 qual and small 20-22 without clearing Cross fryers straight cockerels 22, caponettes 24, Columbias 22-24, cleanup 15, Vantress reds 20-22, few lots 24 Turkeys — demand good for light supplies

Wholesale selling prices No 1 and fancy qual broilers or fryers heavy type 3-4 lbs 19-24 Pullets 4½ lbs and over 33. Hens heavy type 20-27, light type 15-20 Ducks Muscovy 15-25, Pekins 32 Turkeys young hens 43-45, young toms 30-32

EGGS
PHILADELPHIA, Dec 7 — Market unsettled. Increased offerings of large extras at slightly lower prices met slow sale Other grades were in fair demand with supplies adequate

Wholesale selling prices Min 10 pct AA qual. large 45-50, white 56-57, brown 55-56, medium white 49-50, brown 49-50. Extras, min. 60 pct A qual large 45-50, white 53-54, brown none, mixed color 53-54, medium white 49-50, brown none, mixed 49-49½. Standards 47-48, current receipts none, checks 30 35

Receipts Dec 6 — 3,730 cases all by truck

Prices Slightly Higher for Year In Poultry Sale

Lancaster Poultry Exchange (Rohrerstown) — (Sales report, Sale No. 105, Tuesday, Dec 6, 1955) — Prices in Tuesday's poultry auction were slightly higher than a year ago, with 8 lots listed, totaling 29,700, and 5 lots, totaling 25,500 birds sold. Prices ranged from 19 to 19½ cents, averaging 19.42. For the corresponding day a year ago, receipts were 14 lots of 68,050 birds with 11 lots totaling 47,050 birds sold at 18½ to 19½, mostly 19½.

Sales Tuesday included: from Miller and Bushong (Sam Stoltzfus) 1700 Indian River Cross Liponized to Victor F. Weaver, Inc., 19½; Robert Bollinger, 200 White Rock cockerels, no sale, 0002 xpxng koh j uwoy :pqr %61 Red Vantress 19½ bid, no sale; from James Mohan 2000 White Cornish, 18½ bid, no sale; Fruitville Farms, Abram Shank, 9000 White Vantress to Grimes and Hauer and 4800 White Vantress to same party at 19½ from Miller and Bushong (Aaron P. Miller) 5000 Indian River Cross Liponized to Victor F. Weaver, Inc. at 19 and 5000 Red Vantress Leghorns to Harry F. Weaver, Jr., at 19½.

BALTIMORE POULTRY

BALTIMORE Dec 7 — Market steady on fryers, heavy hens (fowl), pullets and geese Fair to good demand Prices unchanged to slightly higher Demand centered on top quality and heavier weights Receipts moderate Market barely steady on tom turkeys and Muscovy ducks Prices generally declined 1c Market steady to firm on hen turkeys Fair to good demand. Receipts moderate. Wholesale selling prices per pound in Baltimore Broilers or fryers: 3 lbs and over 23-27, mostly 25-27. Hens heavy type 23-26, light type 15-16 Pullets 32 meat turkeys: toms 32, hens 42-43 Ducks, Muscovy 24-25 Geese: one lot 30

Price Range from 20-22.25 Friday In Poultry Sale

Rohrerstown, Pa — (Lancaster Poultry Exchange, Sales Report, Sale #104, Thursday, Dec. 1, 1955)—Prices ranged from 20 to 22½ cents in the Thursday, Dec 1 auction here on 45 lots of 123-615 birds offered, with 43 lots totaling 115,115 birds sold One lot of 650 Leghorn fowls went at 15, turkey broilers, two lots totaling 1500 birds, sold from 30½ to 31 The Thursday average was 20½ cents on 41 lots of 112,965 birds.

Here are sales: (Consignor listed first, then price): Millport Roller Mills (Raymond Hust), 1200 White Vantress to R. J. Brandle at 20½; John B. Noll, 2800 Indian River Cross to H. W. Longacre at 20½; Donald Noll, 350 Indian River Cross to Producers Cooperative Exchange at 20½; O. Kenneth McCracken (Enos Eshback), 3000 White Cross to Victor F. Weaver, Inc. at 20½; Jacob R. Cramer, 750 Indian River Cross to Roy E. Ream at 20½.

Miller & Bushong (Lloyd Ream), 4500 White Vantress to Grimes & Hauer at 20½; Miller & Bushong (Naomi J. Blessing), 500 White Vantress to Roy E. Ream at 20½; Fruitville Farms (Abram Shank), 5000 White Vantress to Victor F. Weaver, Inc. at 20½; Wenger's (Paul Hilsher), 500 Red and White Vantress to Meaders Poultry at 20; Wenger's (David Hensley), 1100 Indian River Cross to Grimes & Hauer at 20½; Miller & Bushong (Herbert Fisher), 2900 White Vantress to Grimes & Hauer at 20½.

Mrs. W. Mathras, 1000 Indian River Cross to Roy E. Ream, 20½; Walter Mello, 4500 Red Vantress, and 4000 White Vantress, no sale; C. B. Kauffman, 1830 Indian River Cross to Victor F. Weaver, Inc., 20½; Miller & Bushong, (Elmer Beiler), 2500 Red Vantress to Harry H. Weaver Jr., at 20½; Miller & Bushong, 1500 Indian River Cross and 1500 Red Vantress to Producers Coop. Exc. at 20½; J. Robert Muser, 3500 Red Vantress to Mandata Poultry at 20½

Nora B. Burkholder, 750 Belts to H. W. Longacre at 31 and 750 Belts to Victor F. Weaver, Inc. at 30½; Pennsylvania Farm Bureau (Russel Kreider), 925 White Americans to Producers Coop 20½; George W. Jackson & Son, 650 Leghorn fowl yearlings to S. E. Davis, 15; Herbert Pennington, 1100 White Mountains to Victor F. Weaver, Inc. at 20½; Earl Fornev, 500 White Rock cross to Walter C. Mellinger at 21; Miller & Bushong (Roy Harman) 3300 White Vantress to Grimes & Hauer at 21.

Miller & Bushong (Roy Harman) 5600 Indian River Cross to Harry H. Weaver, Jr. at 20½; Miller & Bushong (Lester Weaver), 4500 Red Vantress to Walter C. Mellinger at 20½; Luke N's Meaders Poultry at 22½; Leroy M. Sensenig, 4800 Meat Packers to Victor F. Weaver, Inc. at 20½ and 5000 Meat Packers to Harry H. Weaver, Jr. at 20½; William Selcher, 1200 Meat Packers and 1200 White Vantress to Victor F. Weaver, Inc. at 20½; William H. Fritz & Son, 5000 Red Vantress to Grimes & Hauer at 20. 5000 Red Vantress to Grimes & Hauer at 20½; 6000 White Vantress to Mandata Poultry at 20½; Robert Swartz, 1500 White Cross to Victor F. Weaver, Inc., at 20½.

Fruitville Farms (Chester Murrey), 5000 Indian River Cross to Harry H. Weaver, Jr. at 20½; Indian River Farm (John Geil), 4100 Indian River pullets Liponized at 20½ and 4000 at 20½ to Harry H. Weaver, Jr., Melvin Eberly, 400 Indian River Cross and 700 Indian River Cross to Roy E. Ream at 20½; Harold S. Garber, 8500 Meat Packers to Grimes & Hauer at 20½ and 9000 Red Vantress to Producers Coop at 20½; Robert M. Mvlin, 300 Indian River Cross to Walter C. Mellinger at 20, and Marlin Casel, 350 White Cross to Carl B. Risser at 22½.

EASY MONEY

ST JOSEPH, Mo — The four persons recently hired by County Clerk Floyd Inman to count the absentee votes at a recent election were paid \$5 each. They had a total of four votes to count.

Gian-Carlo Menotti Opera Slated Dec. 10

A special event of the coming holiday season will be the presentation of the Christmas opera, "Amahl and the Night Visitors" by the Lancaster Opera Workshop The Gian-Carlo Menotti opera will be presented at Reynolds' Junior High School, Lancaster Dec. 10 at 2:30 & 8:30 p. m.

For the first time the Opera Workshop will give a special youth concert at 2.30 in the afternoon. Preceding the presentation of the opera the newly formed Opera Workshop Chorus will join with the children in a carol sing.

The title role of "Amahl" in the afternoon performance will be taken by Robert Stephen Jones, 12 years old, son of Mr. & Mrs. Robert B. Jones, 187 Blossom Hill Drive, Lancaster. In the evening performance, "Amahl" will be portrayed by Paul P. Martin, II, 12 years old, son of Mr. & Mrs. Paul P. Martin, 932 Virginia Ave., Lancaster, Pa.

Others in the cast include Ann Jones, as the mother, Jack L. Ryan, Clinton W. Bell, Jr. and E. J. Tighe, Jr., as the three kings, Mervin Blank as the Page, and Bonnie Hoeltzel as the dancer.

Accompanist and choral director for both performances is Dorothy Rose Smith and the entire production is under the direction of Frederick Robinson, artistic director of the Lancaster Opera Workshop.

Tickets for both performances are available at Workshop Headquarters, 404 N. Duke Street, Lancaster, at Troup's Music House or from any Workshop member.

**TRI-TOWN
ELECTRIC CO.**
GAS AND ELECTRIC
APPLIANCES
SALES AND SERVICE
Electrical Contracting
Leola, Pa. Phone 6-6661
"Open Thurs & Fri 'till 9"

ALTMAN'S SUPER-A FEEDS

are timed tested, scientifically balanced, vitamin complete and are manufactured daily in three modern plants. Compare our prices.

12 varieties of Baby Chicks available at all times.

Ask about our special discount on early orders for chicks.

Super A Dog Feed 25 lbs. . . . \$ 2.05	Broiler Ration \$ 4.55
Rabbit Pellets 25 lbs. 1.35	Horse Feed 100 lbs. . . . 3.45
Special Chop 100 lbs. 2.95	Enriched Fitting Ration 3.15
15 pc Hog Feed 3.50	20pc Quality Egg Mash 3.80
20 pc Hog, Sow & Pig 3.90	20 pc. Yeast Egg Mash. . 4.20
B Chick Starter 4.00	20 pc. Blue Bird Dairy. 2.70
Grower Crumbles. 4.10	32 pc. Dairy Concentrate 4.10

ALTMAN'S CASH FEED STORE

WILLIS H. WEAVER, MANAGER

947 Harrisburg Ave. Phone Lanc. 4-7715

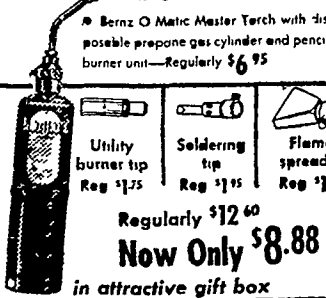
WE DELIVER 10c per hundred discount on half ton lots or more

GIFT SUGGESTIONS

Just a few of the Hundreds of Items on Display

MEN

Give him this handy
TORCH SET



FOR CHILDREN

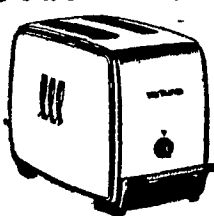
Visit Toyland!

Bring The Kiddies
SPECIAL PRICES
ON 1954 TRAINS
SCHWINN BIKES
ERECTOR SETS
TRUCKS, HOBBY
HORSES and many
others.

WOMEN

Give Her This

**TOASTMASTER
POWERMATIC TOASTER**



New Power-Action automatically lowers bread, starts it toasting... then raises it—all by itself. Makes perfect toast.

B16 2-SLICE \$27.50

Free Parking at Rear of Store - OPEN THURS. & SAT. 'TIL 9 P. M.

Kauffman's Hardware

"The Family Gift Center"

201 E. Main St.

NEW HOLLAND

Ph. 4-0951

CALL NOW! SAVE

\$2.00 Per Ton and
3 1-4 pc. Cash Discount

on all
Farm Bureau

QUALITY FERTILIZERS

By Taking Delivery
Before Jan. 7 or Take
Advantage of \$2.00
Early Delivery Discount
and pay June 15, 1956

Farm Bureau
Dillerville Rd., - Lanc.

BRANCHES:
Manheim - New Holland
Quarryville