

## Market News

LANCASTER  
LIVESTOCK MARKETBy David S. Lorenson, Reporter  
USDA Market News Bureau

Lancaster, Pa. (Wednesday To Wednesday Review)—Cattle Demand was fairly good early this week for slaughter steers average choice and better and closing prices held mostly steady. Grass steers, along with good and low choice shortfeds, were slow to sell and closed the week barely steady. Demand continued good for cows and prices closed 50 to 75c higher with most advance on canner and cutter grades. Supplies of bulls were plentiful and that class closed on a steady basis. Stockers and feeders sold in a rather slow trade all week, however, closing prices were very little changed from late last week. Bulk choice fed steers 1000 to 1200 lbs sold from \$20.50 to \$22.25, several loads choice and prime 1200-1300 lbs brought \$22.25 to \$23.00, one load 1270 lb prime steers earned \$23.75. A few lots, choice and prime 1400 to 1575 lb steers \$21.00 to \$21.25, these around 50c higher than the previous Monday. Good grade steers turned from \$18.00 to \$19.50 including a few loads 1100 to 1250 lb grass steers \$18.00 to \$18.50. A few commercial and good heifers brought \$16.00 to \$18.00 with utility grass heifers down to 1300 or below. Most utility and commercial cows this week \$11.00 to \$12.75; canners and cutters largely \$8.00 to \$11.00 with high yielding cutters to \$11.50. Some shelly canners sold down to \$7.00. Utility and

## LANCASTER POULTRY

Lancaster Poultry Exchange (Rohrerstown)—There was no sale Tuesday, Nov. 22. Next sale, Friday, Nov. 25.

Sales Report, Friday, Nov. 18—There were no 32 lots of birds offered, totaling 105,170. Sold, 24 lots, totaling 74,320. Broilers ranged from 18 1/4 to 21 1/4 cents per lb, averaging 20.48 cents. Two lots of heavy fowls sold at 21 1/4. Top went to Clayton Zimmerman, New Holland, on 1,000 White Vantrass, ten weeks old, purchased by Harry Weaver, Blue Ball. Topping the heavy fowl division were New Hampshires, consigned by Harry Holsinger, R1 Lancaster, 800 fowl yearlings, purchased by Producers Cooperative Exchange, Coatesville, at 21 1/4. Two lots of turkeys, totaling 1,750 head, were offered, but bids of 28 1/4 to 29 1/4 were rejected.

commercial bulls brought \$14.50 to \$17.50; cutters largely \$13.00 to \$13.75. Bulk of the medium and good stocker and feeder steers 600 to 950 lbs turned from \$16.50 to 18.50. Best demand for weights around 750 lbs and lighter. A few loads choice 600 to 700 lb feeder steers \$19.00 to \$20.00, several loads good 875 to 1000 lb feeder steers \$17.00 to \$17.75. A few loads good to low choice 400 600 lb stock steer calves and light yearlings \$20.00 to \$21.50.

Calves Vealers around 50c lower than last Wednesday, most pressure on good and low choice grades. Wednesday's sales included choice and prime vealers from \$24.50 to \$27.00, a few to \$28.00; commercial and good, \$19.00-23.00 with utility down to \$14.00.

Hogs Barrows and gilts around \$15.00 lower than last Wednesday, cows scarce, mostly 50c lower. Bulk barrows and gilts U S mixed 1-3, 180 to 240 lbs by Wednesday, \$12.75 to \$13.25, a few mostly 1 and 2, 180 to 220 lb to local small killers up to \$13.50. A few weights around 270 lbs down to \$12.50. Sows 400 lbs and lighter, \$12.00 to \$12.50; 400 lbs and over, \$10.50 to \$11.75.

Sheep Quality of the lamb offering was plain this week and prices about steady with last Wednesday. Bulk good and choice woolled slaughter lambs \$17.00 to \$20.00, a few choice 80-85 lb weights to \$20.50. Utility and low good \$14.00 to \$17.00.

West Willow  
Farmers AssociationCUSTOM GRINDING AND  
MIXING W-W-F POULTRY  
FEEDS ULTRA-LIFEED  
FORMULASWest Willow, Pa.  
Ph. Lanc. 45019THE NEW LINCOLN WELDER  
WELDANTOWER COMBINATION

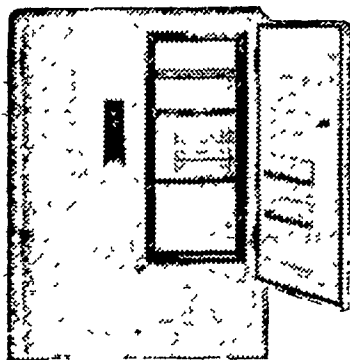
- 200 AMP Welder
- 4 KVA Stand by AC Power Unit

For Easy Welding and Emergency Power. Also, New and used Lincoln Welders.

AUTHORIZED LINCOLN WELDER DEALER

HIESTAND INC.

Marietta 6-9301

WILSON  
HOME FREEZERS

Big and rugged!

built to farm  
requirements!

15 to 90

cubic foot capacities

Get enough frozen storage space for better, year-round family eating—better business! Get a farm-size Wilson! Plenty of room to store family food of all kinds—and hold fryers, produce, etc. cold till you're ready to sell! Stop in and see the freezer line two manufacturers combined to make more convenient for you—Wilson!



Double the heritage of any other leading line!

L. H. BRUBAKER

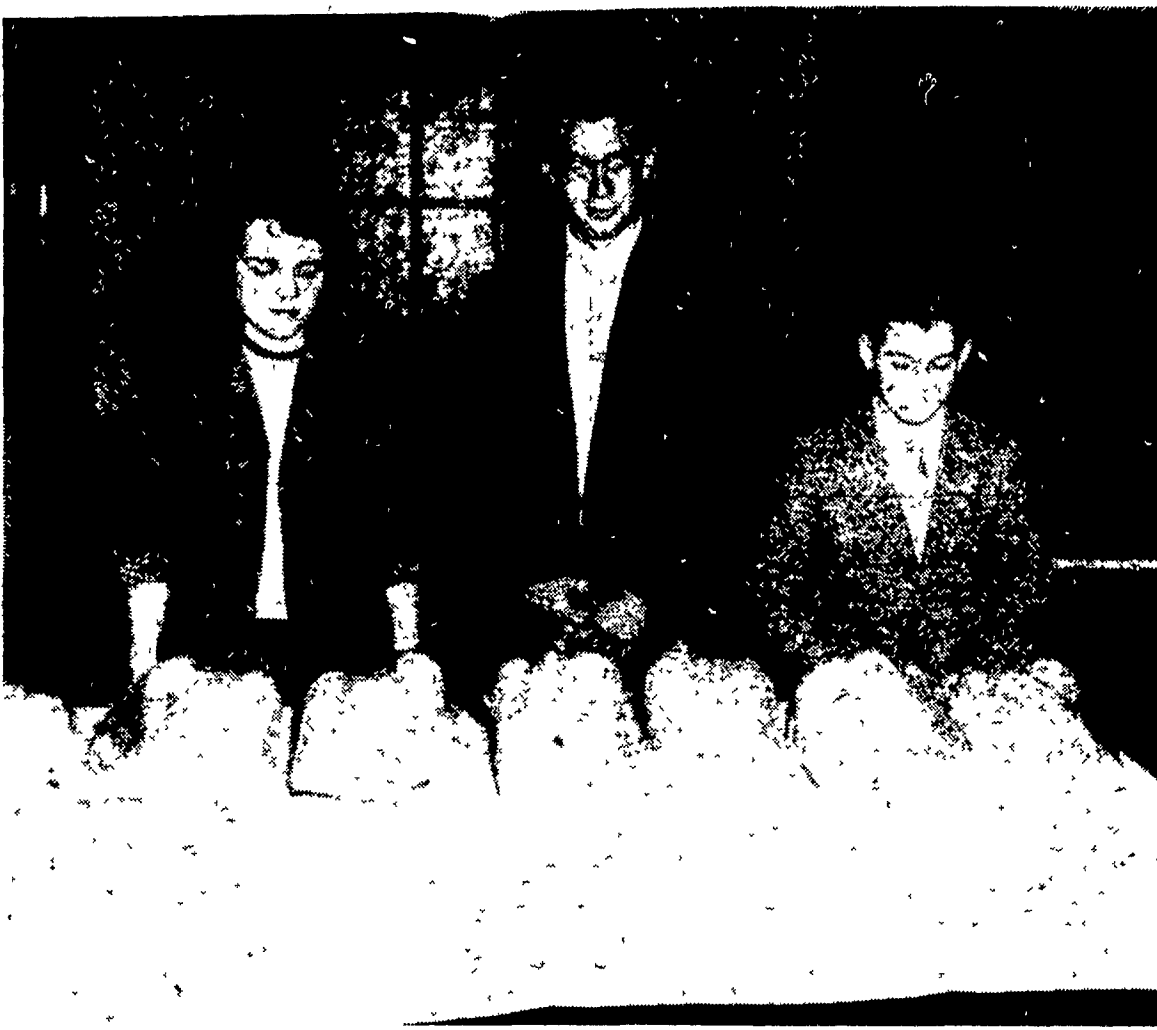
Lancaster R. D. 4

Lititz, R. D. 3

2 STORES TO SERVE YOU

We Sell To Serve — Serve To Sell

## Capon Roundup Winners



Here are the first three exhibit winners of the recent Lancaster County 4-H Capon Club Round-Up at Hotel Brunswick, Lancaster. From left to right, Miss Nancy Newcomer, R2 Lititz, third-place winner; Wilmer D. Esbenshade of 1631 Esbenshade Road, Lancaster, second, and James R. Groff, R7, Lancaster, first. Mr. Esbenshade scored 99 of a possible 100 points on his year's project to top the round-up, showing a profit of \$83.44 after feed costs and other expenses, totaling \$223.24, were deducted

from a dressed bird sale of \$306.68. Premiums were awarded by the Lancaster Kiwanis Club, sponsor of the event. Entertainment was provided during the dinner award meeting by the Holstein Quartet, which is in Chicago this week at the National 4-H Club Congress. Members of the quartet are Raymond Denlinger, R4 Lancaster; Stanley Longenecker, R1 Strasburg; Aaron Landis, R1 Strasburg, and John Stoner, R7, Lancaster. (Lancaster Farming Photo).

## LIVE POULTRY

PHILADELPHIA NOV. 23—Market Week. Supplies were in excess of the light demand for most classes. Late offerings at liberal price discounts failed to clear stocks. Small white rock pullets 25c. Fryers in over supply failed to clear. Few lots caponeted cross fryers 24c. Others 23c. mixed 23 1/2c. white rocks 20-23. Vantress reds 22-23c. Cross capons 45c. Capon slips 25-28c. Turkeys unsettled. Early demand good for all except large toms. Trading active with hens and small sizes toms in buyer preference. At close liberal supplies especially of heavy toms were unsold. Heavy type hens 42c. few fancy quality 45c. Y toms 30-32c. Large sizes 24-25. No small type.

Wholesale selling prices No 1 and fancy quality Broilers or fryers heavy type 3-4 lbs. 20-24. Pullets 4 1/2 lbs and over none 4-4 1/2 lbs 25. Hens heavy type 18-25 light type none. Duck muscovy 18-20. Pekins 28-32. Turkeys Y Hens 42-45 Y toms 24-32.

## EGGS

Philadelphia Nov. 23—Market firm at high prices on large whites but weak at lower prices on mediums. Supplies of large were barely sufficient for the very good demand. Mediums were in fair demand with supplies more than adequate. Fresh checks 35c, storage checks 28c, with supplies scarce and wanted.

Wholesale selling prices: min 10 pct. AA Qual large 45-50, white 58-59, brown 55-58c, brown none, white 44-44 1/2, brown 43-44, Extras min 60 pct. A qual, large 45-50, white 57-58c, brown none, mixed 55-56, medium white 42-43, brown none, mixed 42-43.

Hogs Recover Slightly  
From Earlier Slump

Hog prices at major terminal markets around the nation recovered a bit this week, advancing from a Tuesday slump. A large supply arrived on the second market day of the week, pushing prices to the season's low mark. Moderate offerings Wednesday allowed some gain, as much as 25 to 50 cents a hundred at Omaha and 25 cents at Chicago.

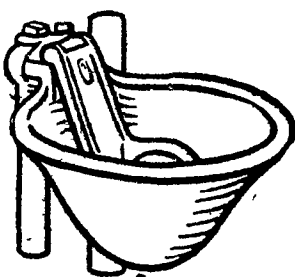
In Chicago, high prime 1100-1156 lb fed steers brought \$24.50-24.75, with a load of 1156-pounders going at the \$24.75 figure, highest in a month or so. The Wednesday-to-Wednesday review of the Lancaster market will be found on page two.

BEEFMIX  
FOR FASTER AND BIGGER GAINS36 pc. Protein  
Supplement Feed  
With Stilbestrol

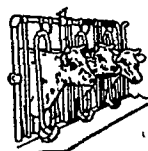
## Eastern States Farmers' Exchange

Lancaster Warehouse Ph. 4-3755  
Quarryville Warehouse Ph. 178  
Or Your Local Representative

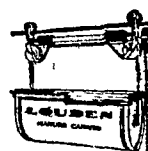
## LOUDEN WATER BOWLS

Turn Water  
into DollarsFREE BARN  
PLANS

If you plan farm building improvements drop in for a copy of Louden's Barn Plan Book



AND STANCHIONS



LITTER CARRIERS

Ag schools and leading dairymen say water bowls pay for themselves the first year or two in increased production and butterfat. So install Louden bowls for more profit—less labor—less disease. The famous Louden Master-Made bowl can't be beat for dependability and long life. The best bowl you can buy. And you'll like the price tag on the Louden Economy Bowl. See us for your barn equipment needs.

20 P. C. Off On All Louden Equipment On Hand

SNAVELY'S FARM SERVICE

New Holland

Ph. 4-2214

LOUDEN Everything for Farm Buildings