

Royalty, Democracy Rule At Air-Age Hatchery

Royalty, democracy and the hatchery business are geared to the air age on the L. L. Logan Poultry Farm and Hatchery on the outskirts of London Grove.

Royalty? There's a queen, Mrs. Lois Logan, Queen of the Pennsylvania Flying Farmers. There's democracy with Mr. Logan, vice-president of Pennsylvania Flying Farmers, president of the Delaware-Chester County Poultry association.

Farmer planes now land on ground adjoining the original Logan homestead, where bank barns today house broilers instead of livestock and machinery.

Fried Chicken for Breakfast

Few are more enthusiastic about the farm flying game than Mrs. Logan, who on June 4, 1955 was crowned state queen, and who, with 29 other state queens, competed at the 1955 National Flying Farmer convention queen selection in Lansing, Mich.

Homemaking, hooking rugs, needlepoint — fried chicken for breakfast — these are but a few of Mrs. Logan's loves. But primary to both is the hatchery, and association work is an essential factor in their business. Mrs. Logan is active in the All-State Poultry Association and the IBCA — International Baby Chick Association.

There was a homecoming for Mrs. Logan when she received her crown last June. A graduate of Slippery Rock State Teachers College, she taught the first, second and third grades at Meridian, Pa., and at Meridian she was crowned Queen to replace Mrs. Allen Homan of Pennsylvania Furnace.

As though a full-time job at the hatchery office were not enough, Mrs. Logan has found time to play an outstanding role in Soroptomist International. She has been a member at West Chester 14 years, holding almost in 1949 she was president, and every office in that organization now is corresponding secretary. She is also a director in the Pennsylvania Flying Farmers association, by virtue of her appointment as Queen.

Chicken Barbecue Boom

One of the brightest spots in the poultry business, Mr. Logan told while conducting a tour of three visitors, is the increasing number of chicken barbecues. As a result, the entire broiler producing region of Lancaster, Chester and adjoining counties is benefiting tremendously.

Mr. Logan became one of the

The United States Post Office department has disposed of enough old records and forms in the last fiscal year to fill some 170 freight cars, according to a department spokesman.

BROKEN HIP; COSTLY SLIP!

Every day you permit your cows to use the barn with slippery floors, you run the risk of costly accidents to one of your valuable animals.

Regular applications of Campbell's Skidless Barn "Snow" keep your barn neat and cows on their feet. Barn "Snow" prevents slipping, keeps barn floors sanitary white and increases the amount of plant-food in the manure. Barn "Snow" is cheap livestock insurance. Buy some today from your nearest feed dealer. If he cannot supply you, send us his name and we'll see that he is supplied. Manufactured by HARRY T. CAMPBELL SONS' CORPORATION, Towson 4, Md.

Skidless

BARN SNOW

Sold by

Your Local Dealer

Distributed by

HIESTAND, INC.

Marietta Phone 69301

first hatchery operators in the Keystone State to become Pul-lorum Clean, and this is the firm's 23rd consecutive year with that rating.

Holding a bachelor of science degree in poultry husbandry from Pennsylvania State College, Mr. Logan has done much to improve strains through crosses. White Cornish play a large part in this program, with Barred Rocks, White Leghorns, New Hamp-sires and Rhode Island Reds

Due to the popularity of his breeding program, demand has become international. Here again the air age enters. Air terminals today may be filled with the "cheep-cheep" of Logan baby chicks, off by plane to the western United States, down into the Caribbean Islands, Mexico, off to other foreign climes.

William Penn Ate Lunch Here

William Penn, legend says, once ate lunch under a spreading oak tree in front of what is now the Logan Hatchery, enroute west from Philadelphia. To find planes landing on one of the three runways just behind the home and hatchery, or to find chicks traveling thousands of miles by air — within the 60-hour limitation — might astound Mr. Penn were he there today. And a converted barn accomodating 6,000 chicks,



Mrs. Lois Logan

(See Accompanying Story)

a broiler house with a capacity of 8,000 with central heating and automatic feeders is a far cry from the acres the state founder once knew.

Mr. Logan, a licensed pilot since 1950, fully believes his Cessna 170 is a most important cog in the hatchery machinery.

Test sections of "rubber roads" have been in use in several states for over five years. Said to be longer-lasting, skid-proof and more resilient than conventional pavement, cost of the rubber-containing surface until now has prevented its more extensive use.

Refining, most hazardous operation of the petroleum industry suffers an annual average of 163.81 fires per 100 refineries with an average loss per fire of \$8950, according to an American Petroleum Institute report, based on fire losses over a span of 2 years.

MANUFACTURERS OF CHALLENGE RESIDENTIAL FENCES AND GATES

SALES-SERVICE and Erection of All Types of Fencing

Challenge Fence Co.

Ph. 57246 MANHEIM, PA.
Ph. OV-76121 STRASBURG, PA.



HOW TO PLAY "SQUASH"—That's what you'd learn if you played opposite Herb Diedrich, Dundee, Ill., high school's 335-pound junior-year menace. Sports goods firm which outfits him says he wears the largest football uniform ever made—a claim nearly as hefty as is Herb. Statistics: Size 62 jersey, 56 pants, 7 1/2-inch helmet. And all this mountainous threat to the opposition is hung on a five-foot, eight-inch frame.



WHY DON'T YOU PULL THE STRINGS FOR A CHANGE ?

Vote Democratic On November 8

DAVID R. EABY, CHAIRMAN

LANCASTER COUNTY DEMOCRATIC COMMITTEE

ALTMAN'S SUPER-A FEEDS

are time-tested, scientifically balanced, vitamin complete and are manufactured daily in three modern plants. Compare our prices:

20 pc. Egg Mash ... \$ 3.85	16 pc. Blue Bird Dairy....\$2.55
20 pc. Egg Mash Pellets...4.00	20 pc. Blue Bird Dairy.... 2.75
Growing Mash ... 3.95	16 pc. Blue Bird Egg Mash 3.55
Growing Mash Crumbles 4.15	Corn..... 3.25
Starter (meg) 4.05	Cracked Corn..... 3.35
Scratch Feed 3.35	Dog Meal (25 lbs.)2.05
Hog Feeds..... 3.45	Peat Moss (Bale)4.20
20 pc. OF... 3.95	Staz-dry (Bale)..... 2.20

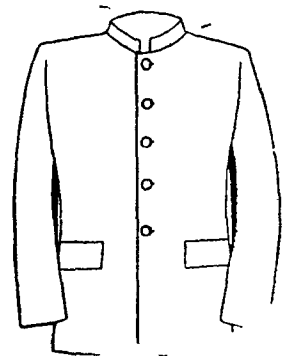
ALTMAN'S CASH FEED STORE

WILL S. H. WEAVER, MANAGER

947 Harrisburg Ave. Phone Lanc. 4-7715
WE DELIVER

ABE LEVITT CLOTHING SHOES FURNISHINGS

PLAIN SUITS
SACKS AND
FROCKS
Ready made
and made to
measure



SHAWLS
Black and
Gray
Single and
double
AT lowest
possible prices

ALTERATIONS FREE

MEN'S AND BOYS' PLAIN HATS

Available In Any Style You Desire

SHOES FOR
THE ENTIRE
FAMILY



LADIES HIGH
SHOES—ANY
SIZE OR
WIDTH

Full Line of Ladies - Children's and Infants Dresses

241 W. Main St.

New Holland Ph. 4-2200

Plenty of Parking
At Rear of Store

We Give and Redeem
S & H Green Stars