

Campus News

Got Fall Classes?

Fall Registration for courses begins in April!

Honors, athletes, students with disabilities – April 2nd
 All others begin on April 3rd, depending upon your credits
 (http://www.registrar.psu.edu/Reg_Timetable/Reg_Timetable_Main.cfm)

Online resources:

Who's my academic adviser? Look on eLion, <https://elion.psu.edu> – under adviser information (on the left hand scroll bar) – your adviser's name will be listed here, as well as on your degree audit.

How early can I register for classes? Your degree audit will list the first day you can enroll online or in the Registrar's office. The day will correspond to the number of total credits you have (completed credits plus current credits in SP12).

Degree Audit – pull off from eLion, BEFORE meeting with your academic adviser: <https://elion.psu.edu/>
 To pull up a degree audit for a major you're thinking about pursuing, to check your semester schedule, etc. For students pursuing degrees that Brandywine offers, make sure you pull audits from "University College". If you are in DUS or if you are thinking of changing your major, pull an audit listed as "alternative majors". Degree audits can also be acquired for minors.

RAP Sheets (Recommended Academic Plans) - Every major has a "RAP" sheet, Recommended Academic Plan, available through elion in the new elion PILOT – click on Recommended Academic Plan. In addition, the RAP sheets for our campus majors can be accessed from the campus webpage.

General Education Requirements for PSU Degree: <http://www.psu.edu/bulletins/bluebook/gened/>
 This gives an overview of what all students are required to take to meet their gen eds (GA, GS, GHA, etc).

Advising@psu - www.psu.edu/advising - excellent source of academic information at PSU – you can do an online search by topic or alphabetical search. Includes everything from how to drop a course, to what minors does PSU have, to how do I improve my GPA and/or remove deficiency points, to transfer course evaluations from other universities, to important deadlines.

Online Schedule of Courses: <http://schedule.psu.edu/>

Choose Fall 2012, Brandywine Campus, for courses listed alphabetically, or do an advanced search for whatever gen ed requirement you want to fulfill for next semester.

What if I'm going to be a junior at University Park campus? How do I seek someone's assistance and enroll for fall at UP?
 For rising juniors who've been approved through ETM for University Park majors, here is one webpage that may help you with a smooth transition to UP – <http://www.psu.edu/ouic/intro/>
 You may still consult with your current adviser at Brandywine, this semester.

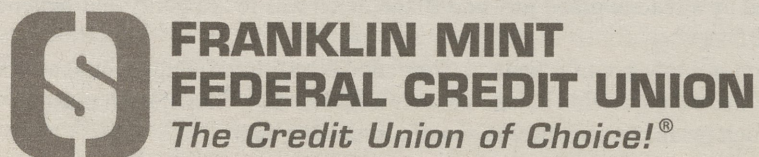
Franklin Mint Federal Credit Union

As FMFCU continues growing and expanding in Delaware County, Chester County, and Delaware, **Penn State Brandywine students** are invited to interview for the following positions:

Full-Time & Part-Time
 Management Trainees
 Internships

Interested candidates should forward their resume to the Human Resources Department at valeriem@fmfcu.org.

Don't forget to learn more about us
 at www.fmfcu.org!



Equal Opportunity Employer

Federally insured by NCUA

From MTV's True Life: I Have Schizophrenia

A conversation with Ben Carpenter

March 29, 2012

Room 101 Main

11:30 am-1:00 pm

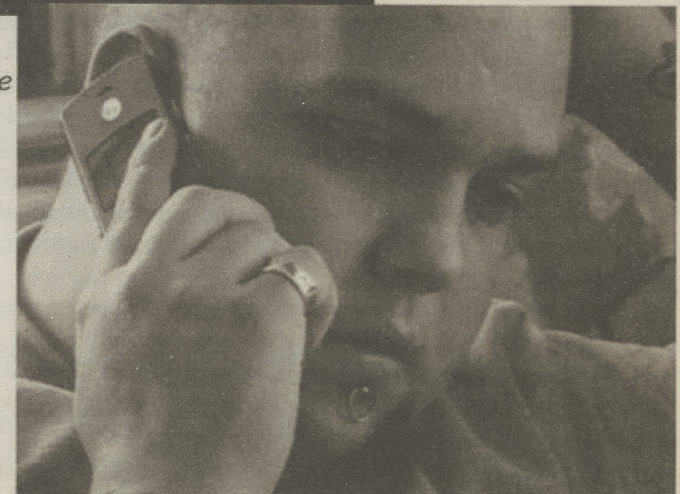
ALL ARE WELCOME

Pizza and Beverages
 will follow in the
 Main Building
 Student Lounge



Ben Carpenter was on MTV's *True Life: I Have Schizophrenia* in 2008. Please join us as we check in with Ben and discuss his ongoing struggle with Schizoaffective Disorder.

For more information please see:
 Mrs. G (318 Main)
 Dr. Zosh (207C Main)
 Ahyana King (Student Affairs-Commons)



This image is a screenshot of a copyrighted television program or station ID. As such, the copyright for it is most likely owned by the company or corporation that produced it. It is believed that the use of a limited number of web-resolution screenshots (reproduction by a teacher or student of a small part of a work to illustrate a lesson for a nonprofit educational experience) qualifies as fair use under United States copyright law. Any other uses of this image might be copyright infringement. This is a logo of an organization, item, or event, and is protected by copyright. It is believed that the use of low-resolution images on promotional materials for this non-profit on-campus event, qualifies as fair use under United States copyright law.