

Eye On Campus

FIRESIDE MUSIC SERIES PRESENTS: TIM BLAINE

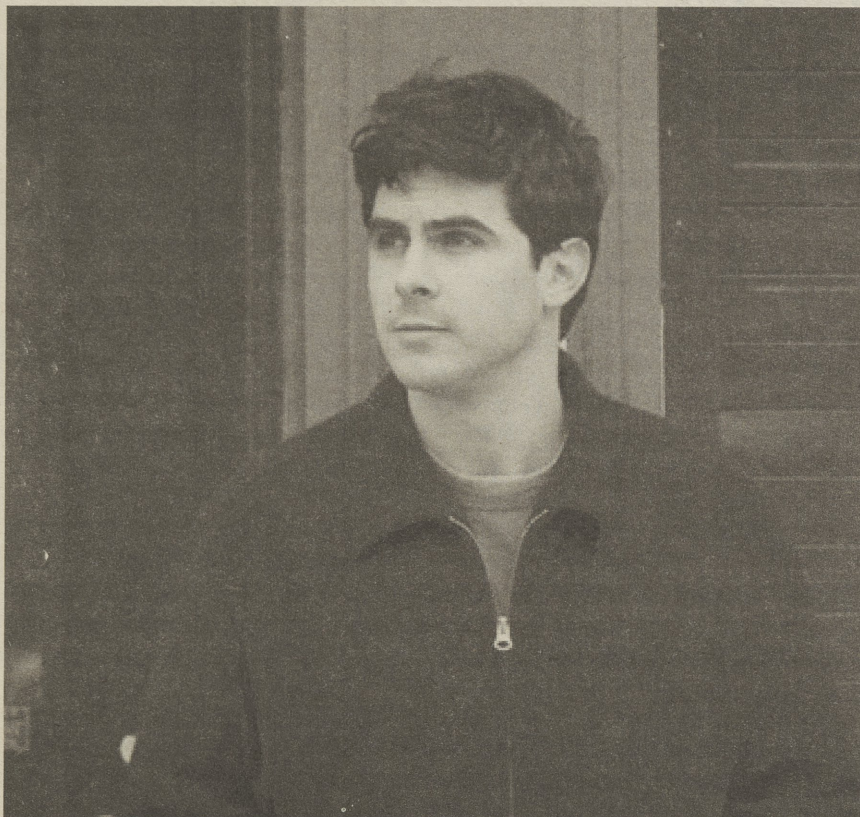


Photo courtesy of www.timblaine.com

By Pat Scanlon
Lion's Eye Editor
pjs5129@psu.edu

On November 8, 2007, Penn State Brandywine's Fireside Music Series continued its ever increasingly successful run this fall. Stepping up to the stage this time was the folky, streetwise sounds of Tim Blaine and his genuinely talented two-piece band. Joined by fellow Boston natives Adam Olenn and James Williams, Blaine's only form of initial introduction was simply "Ok, we're gonna play some songs for you." This turned into a serious understatement, as Blaine and his band wove a tapestry of modern adult contemporary stylings with a combination of the street wisdom of Jason Mraz and John Mayer, and echoes of a fusion of Jack Johnson and Dave Matthews.

However, comparing these players to bigger names is certainly unfair, as Tim Blaine and his band of performers have found their own simultaneously ethereal/down-to-earth alternative sound, possessing a deeper sense of soul and personality than any of their mainstream familiars. Crafting a classic pop rock duo between acoustic guitar and electric bass, and a single drum box style instrument called a cajon, Tim Blaine's modest personality shines in his performance, allowing an exceedingly genuine connection with

the audience and creating an experience perfectly suited for the fireside atmosphere.

Blaine himself switched between his trusty six-string to a Yamaha keyboard to perform the eponymous track from their newest album, Clockwork. The band then followed with a much mellower piece entitled "Drifting and Driving", evoking the tones of a starlit stroll through the city and crafting a calm, soothing feeling that encompassed the entire Lion's Den. Rejoining his band on foot, Blaine returned to his guitar for the latter portion of the set, achieving the feat of actually making their performance of Fall Out Boy's "Dance, Dance" actually sound interesting and, more importantly, listenable.

Having been to our campus before, Blaine and his comrades seemed right at home performing in our midst. The sun energy exuded by the energetic tones of their chosen tracks was more than welcome against the oncoming November flavored chill, which has descended with the autumn.

Needless to reiterate yet still bearing repeating, Tim Blaine was, simply put our stand out performer for this season's Fireside Music Series.

Philadelphia Goes Wireless

By Tom McGlinchey
Lion's Eye Staff Writer
tam5160@psu.edu

Philadelphia is the first city in the world to be totally wireless, but there is a catch. The wireless is not yet fully operable. The company that will supply the network is Earthlink, a wireless provider, and spokespeople have stated that they aim to have it working throughout the city by January 2008.

A variety of places in the city do have strong connections, such as The Philadelphia Museum of Art, Washington Square, in North Philly by Temple, and in West Philly near the University of Pennsylvania. Earthlink has set up 23 free access zones throughout the city.

The Penn State Brandywine campus is completely wireless, so does this mean that we are more advanced than the city of Philadelphia? Not necessarily, according to the investigation done by NBC 10. Philadelphia has a wide area to cover, whereas our campus is very small in comparison. The city is filled with areas and codes. There is North Philly (including northeast and northwest), South Philly (including southeast and southwest), and West Philly that Earthlink has to connect, whereas our campus is not even half of the Penn State system. PSU Brandywine is 1/20th of the system. The majority of the users would be up at University Park being that it is the largest campus of Penn State. The difference between PSU and Philadelphia is that PSU is a free wireless connection (reportedly), when Philadelphia uses a subscription to create a wireless Philadelphia.

Philadelphia city councilman Frank Rizzo thinks that a free connection is not always the right way to go. He is skeptical about Earthlink, citing the company's financial problems and making the point that they laid off 900 employees in recent history. However, Mayor John Street has stated that he has been in contact with Earthlink representatives and has been assured that the city would be wireless by the first month of the New Year. When asked about how many people had signed up for the service, Earthlink declined to comment, but did mention that there is no service in the northeast or northwest part of the city.

According to Justin DiMatteo, an assistant in the Information Technology Services, the wireless connection here on campus that is in place right now is temporary, and he agrees that comparing us to the city of Philadelphia isn't really fair, as a city versus a small college campus are worlds apart.

Currently, Penn State Brandywine is looking to change from the VPN client that is in place something more like what the city of Philadelphia is aiming for, primarily to aid in more reliability in the connection.

Hometown Hero

Name: SrA Aiden Kaskela

Age: 26

Hometown: Yeadon, Pa.

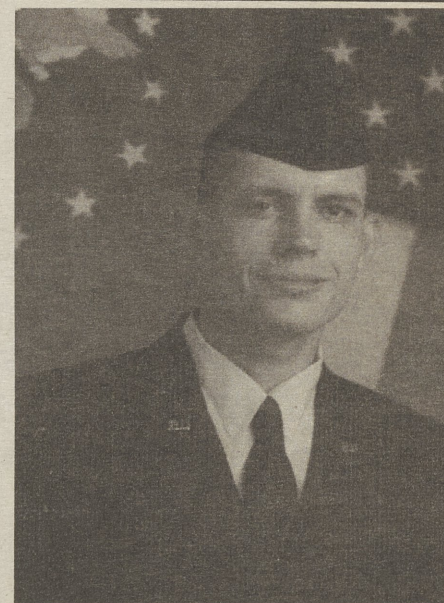
Service Branch: Air Force

Status: Air National Guard

Boot Camp: Lackland AFB, Texas.
February 2005 - 6 ½ weeks

Technical Training: Keesler AFB, Biloxi,
Mississippi. April - November 2005

Special Training: Combat Communications,
specializing in networking



~ SrA Kaskela joined the Pennsylvania Air National Guard in 2004 after graduating from Shippensburg University with a degree in Computer Science. He now resides in Alexandria, Virginia working as a software developer. He attends training with his unit one weekend a month near Harrisburg, Pennsylvania.

Do you know a hometown hero? If you want your service member featured in The Lions Eye, email [Erin Kaskela at eck137@psu.edu](mailto:Erin.Kaskela@eck137@psu.edu).