



# The Lion's Eye

Vol. XXXVI, No. 4

Penn State University, Delaware County

November 2, 2004



## AT PENN STATE DELCO ...

# It's a Kerry landslide

### Lion's Eye poll gives challenger wide campus support

By ANYA TAKOS  
Lion's Eye staff writer  
AAT128@psu.edu

President Bush has lost substantial ground on campus with voters citing their dissatisfaction with the war in Iraq and the economy, according to the final *Lion's Eye* poll of Penn State Delaware County students and faculty before today's election.

Almost two-thirds of respondents, 64.6 percent, support Democratic Sen. John Kerry, giving President Bush, the Republican, 24.6 percent of the vote.

Less than 4 percent of those polled to Libertarian candidate Michael Badnarik.

The *Lion's Eye* poll was an unscientific survey conducted on campus.

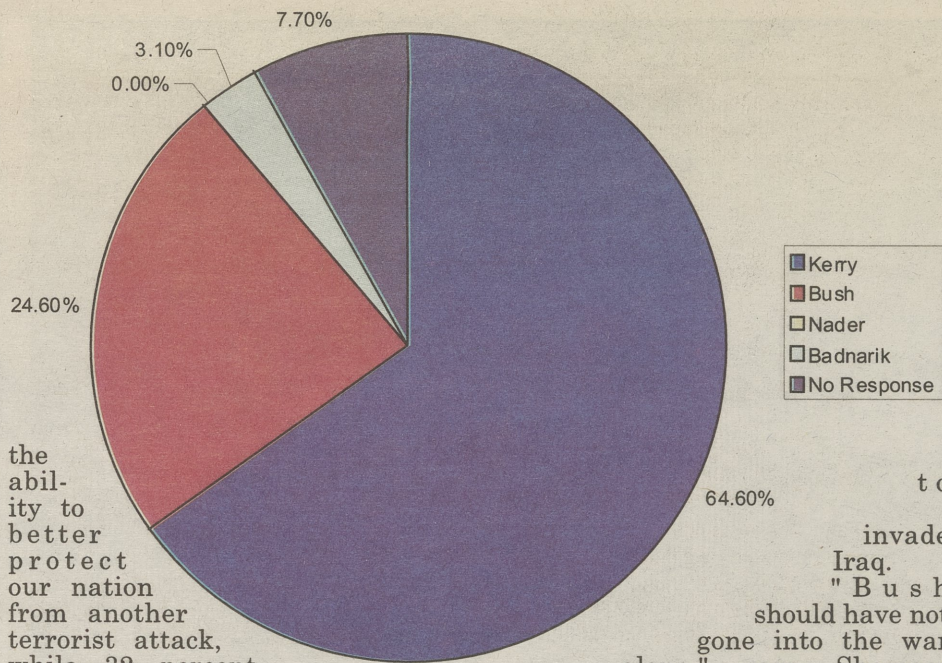
Kerry faces significant competition in the next few hours with close to 40 percent of respondents believing that the Bush administration will remain in the White House for another four years.

Although both candidates have tailored their arguments following the presidential debates, it appears that neither has completely put to rest the voting public's concern over national security.

"I don't believe we are free from terrorist attacks and I have little faith that Kerry would be as proactive as Bush has been in the event of another domestic terrorist attack," said student Mark Cooke.

But about 58 percent of respondents believe Kerry has

Which candidate do you support to become President?



the ability to better protect our nation from another terrorist attack, while 32 percent say they feel safer with Bush and believe him to be more qualified.

That's a problem on campus for Bush compounded by the fact that 69 percent of respondents believe the situation in Iraq would be better handled by Kerry.

Particularly problematic for President Bush is the rising sentiment against the Iraqi conflict, with nearly 74 percent of respondents saying they do not agree with the war. Findings published in a *Lion's Eye* survey last February had 64 percent of students disagreeing with the justification the United States used

to George Bush's 2000 tax plan, which President Bush still supports, financial aid will be cut from the federal level. I can't afford that."

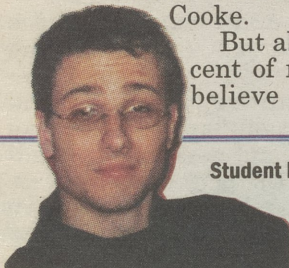
According to the survey, Kerry is the preferred candidate regarding the issue of education among Penn State Delco students and faculty receiving the support of 69 percent of respondents.

While a majority of respondents believe the Democrats to be running a more credible campaign, the gap between the two parties begins to close with 30.8 percent of respondents giving the thumbs up on credibility to the Republican-lead campaign and 58.5 percent to the Democrats.

There is a lack of consensus among students and faculty who agree with neither Bush nor Kerry on the ethical issues of abortion and capital punishment. While 20 percent of respondents agree with Bush's moral agenda, over 35 percent do not approve of Kerry's or Bush's stance on such issues.

However, the issue of a constitutional ban on gay marriage is proving to be somewhat of a pivotal issue with 56.9 percent of respondents agreeing with Kerry's position against a constitutional ban, and 24.6 percent agreeing with Bush's position for a constitutional ban.

Although 10.8 percent of respondents believe that the nation has not been significantly divided as a result of the election, 30.8 percent believe it has been somewhat polarized, and 53.8 percent believe it has become drastically polarized between Democratic and Republican ideals.



Student Profile

How Buddhism helped transform Robert Hyers  
Page 3

## INSIDE

Class of the Month.....	Page 2	Editorial.....	Page 6
Penn State Day.....	Page 3	Basketball previews.....	Page 7
Crossword .....	Page 4	THON Halloween Dance.....	Page 7
Entertainment.....	Page 5	Baseball.....	Page 8