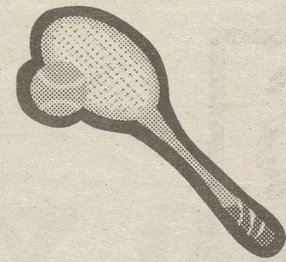


# Sports



## Athlete and scholar: Carolyn Hilden wins Egli award

BY SARAH GALLATIG  
Staff writer

Carolyn Hilden, a sophomore human development and family studies (HDFS) major at Penn State Delaware County, was recently awarded the Penn State Commonwealth Campus Athletic Conference's (CCAC) John S. Egli Scholar-Athlete Award.

The Egli Award is given to "the outstanding female/male scholar, athlete

presented in recognition of successful athletic participation and academic excellence at common wealth campuses." This year it was given to four students, two males and two females. Over a thousand people apply so it is extremely difficult to win.

Hilden has been on the Dean's list at Penn State Delaware County the past three semesters. She was the recipient of the campus's Joseph J. Bradley Memorial Award for the 2001-2002 academic year, and is part of the campus's volleyball and

the basketball teams.

Hilden, who was the basketball team's captain this past season, was also selected to the CCAC's All Conference Basketball Team. Additionally, she is the current president of the campus's Student Athletic Association.

Hilden was nominated for the award by Doris "Tiz" Griffith. The reason Griffith gave for nominating Hilden was "because she does outstanding volunteer work, is an excellent student, and is the member of two varsity teams."

The award was presented at a banquet by Dean Disney and Tim Curley. Tim Curley is the athletic director at University Park. The banquet was held at the Nittany Lion Inn at University Park.

Hilden accepted with a short speech, "It was a great honor to win it because it is out of so many people."

This is the second year that a student athlete at Penn State Delaware County has won the John S. Egli Scholar-Athlete Award. Last year's winner was Colleen Kelly of Glen Mills.

## Lady Lions shoot and score

BY SARAH GALLATIG  
Staff writer

The girl's basketball team had an amazing season. The team was 11-9. They made it to the semi-finals but were defeated by one point at Penn State York.

The team was led by coach Brain Donoghue and two assistant coaches, Lauren Menichini and Chuck Priestly.

This year's team had two returning players, Carolyn Hilden and Ryan McCarthy. Both had a great year. McCarthy finished second a career high score. Hilden was honored as an outstanding player and received the Egli award.

Donoghue said that he is "looking at six or seven players returning next year."

Liz Baronofsky, a transfer from Eastern College, played point guard for the team. Coach Donoghue was quick to say, "She had incredible ball handling skills."

Megan Mann averaged twelve points for the season. She led the team in rebounding and was third in scoring.

### Lady Lions

Megan Kasmer,  
Ryan McCarthy,  
Megan Mann,  
Carolyn Hilden,  
Jeannine Parrish,  
Liz Baronofsky,  
Jessica Ridpath,  
Courtney Gilligan,  
Karyn Speckhals,  
Chrissy Kelly,  
Jill Reilly,  
Arriane Flemming,  
Jill Giosa,  
Jen Orihuela

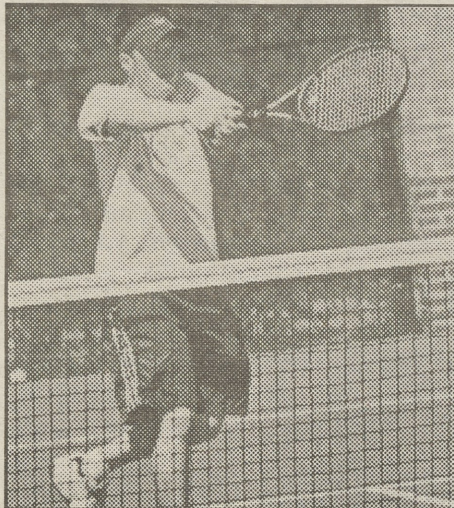
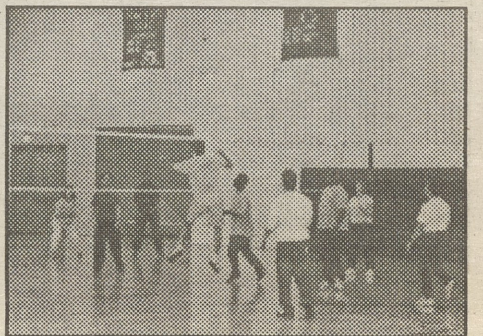


Photo by Anteia Consorto  
Students play tennis for credits during this semesters tennis course. Some of the class are also members of the tennis team.

Photo by Meredith Becker  
A student jumps up to slam the ball into the opposite court.

Students and faculty/staff get together every Tuesday and Thursday during common hour to play volleyball and have some fun bonding time together. Watch for announcements regarding a schedule for the fall semester.



## Final exam time... check out the schedule

### Class Begins

MWF	8:30 a.m.
MWF	9:30 a.m.
MWF	10:30 a.m.
MWF	11:30 a.m.
MWF	1:30 p.m.
MWF	2:30 p.m.
M	3 p.m.
MWF	3:30 p.m.
MWF	4:30 p.m.
W	3 p.m.
TR	8:30 a.m.
TR	10 a.m.
TR	1 p.m.
TR	2:30 p.m.
T	3 p.m.
TR	4 p.m.
R	3 p.m.

### Final Exam

Mon.	April 29
Tues.	April 30
Tues.	April 30
Mon.	April 29
Wed.	May 1
Thurs.	May 2
Thurs.	May 2
Fri.	May 3
Wed.	May 1
Wed.	May 1
Wed.	May 1
Thurs.	May 2
Fri.	May 3
Mon.	April 29
Mon.	April 29
Tues.	April 30
Tues.	April 30

### Final Exam Time

8:30 a.m. - 10:20 a.m.
8:30 a.m. - 10:20 a.m.
12:30 p.m. - 2:20 p.m.
10:30 a.m. - 12:20 p.m.
12:30 p.m. - 2:20 p.m.
2:30 p.m. - 4:20 p.m.
2:30 p.m. - 4:20 p.m.
12:30 p.m. - 2:20 p.m.
4:30 p.m. - 6:20 p.m.
4:30 p.m. - 6:20 p.m.
8:30 a.m. - 10:20 a.m.
10:30 a.m. - 12:20 p.m.
10:30 a.m. - 12:20 p.m.
2:30 p.m. - 4:20 p.m.
2:30 p.m. - 4:20 p.m.
2:30 p.m. - 4:20 p.m.
2:30 p.m. - 4:20 p.m.

### Common Exams

Monday, April 29, 2002

101 Main  
305 Main

Alexander  
Helou

Tuesday, April 30, 2002

101 Main  
Wednesday, May 1, 2002

Baffoe-Bonnie

101 Main  
103 Classroom

Lombard  
Lombard

101 Main

DiMatteo

12:30 p.m. - 2:20 p.m.  
Math 22.1,2,3  
Math 141.1,2

10:30 a.m. - 12:20 p.m.  
Econ 4.2,3

10:30 a.m. - 12:20 p.m.  
Math 21.1,2  
Math 21.3,4  
2:30 p.m. - 4:20 p.m.  
Nutr 251.1

