

Opinion

THE LION'S EYE

Vol. XXXII, No. 1
September 18, 2000
Penn State University
Delaware County

EDITOR-IN-CHIEF
Aimee Stone
acs166@psu.edu

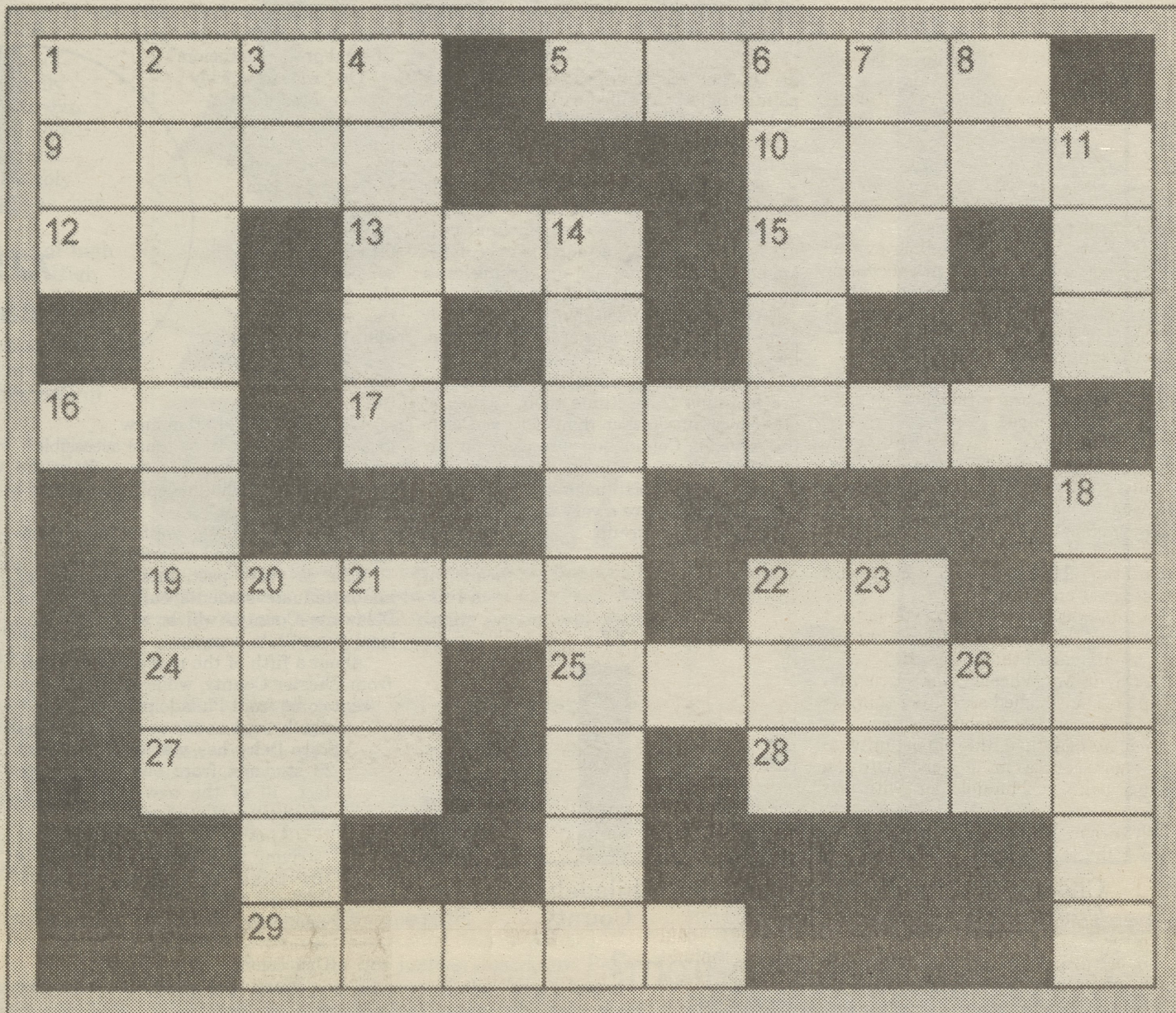
ASSISTANT EDITOR
Doris Ruiz

STAFF
Owen Burgwall
Paul Butler
Anteia Consorto
Mary DiMeglio
Mari Ostbye
Charles Reed
Connie Ringgold
Adam Wojciechowicz
Dan Zacher

ADVISORS
Lyn McCafferty
John Terrell

The LION'S EYE is published monthly during the academic year by the students of the Delaware County Campus. Submissions are welcome from all students, faculty and staff. Material must be typed, double spaced, and submitted in the LION'S EYE mailbox located in the Lion's Den.

The LION'S EYE is funded by the SGA and Student Activity Fee.



ACROSS

- 1. Shoe Company est. 1971
- 5. To Change Ones Environment
- 9. Pinnical
- 10. Defile
- 12. Misses (abbr.)
- 13. AOL or Earthlink
- 15. What is _____?
- 16. Rice-A-Roni: The _____ Treat (abbr)
- 17. Triometric function
- 19. Kings and Queens, for example

DOWN

- 1. Vietnam (slang)
- 2. It's a fact! (lat.)
- 3. Kentucky
- 4. To be

- 6. Dramatic stage direction
- 7. _____ O' Gold
- 8. Texas Instruments (adr.)
- 11. Fifth sign of the Zodiac
- 14. WE ARE _____!
- 18. Not quite MBL
- 20. Extreme emotion
- 21. Not White or Pumpernickel
- 22. First
- 23. New World Order (abbr.)
- 26. Advertisement

Lion's Eye Poll

Staff writer Anteia Consorto asked upper classmen and faculty at the Welcome Back picnic:
What advice do you have for freshmen at Penn State Delco?



"College is not like high school, you have to work harder."

Samantha Loung,
student



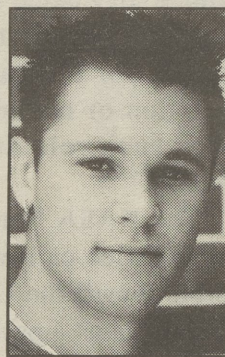
"Plan ahead, study hard, and get involved."

Doreen Hettich Atkins,
Director of Student Life



"Don't be afraid to ask for help."

Jamilla Geter
student



"Transfer."

Pat student,
(refused to give his last name)



"Get involved, keep up with your studies, and have a great time."

Jowo Samah,
student



"Study hard, party when you can, and don't sweat it."

Ron Casey,
student

On Saturday, Oct. 14, the Delaware County campus will hold the annual Family Day event. From noon - 3 p.m., students, families, faculty, and staff will have the opportunity to participate in a variety of campus events.

From pumpkin and face painting to temporary tattoos, everyone is bound to have fun. And not to mention the free food and drinks (sorry, it will be non-alcoholic).

Also, at 1 p.m., the Penn State Delaware County campus soccer team is scheduled to square off with Penn State Mont Alto.

"We are very excited about this year's Family Day, because of the popularity of the first two events. Plus, with the alumni invited, our entire campus family is now involved with this great day," said Karl Grieb, alumni and public relations coordinator for the campus.

All are invited to attend and admission is free! Students and their families are encouraged to attend.

**EARN EXTRA MONEY
WORKING FROM HOME
CALL
215-602-8677**