



Lion's Den Demolished, Replaced on New Site

By Kaspar Stromme

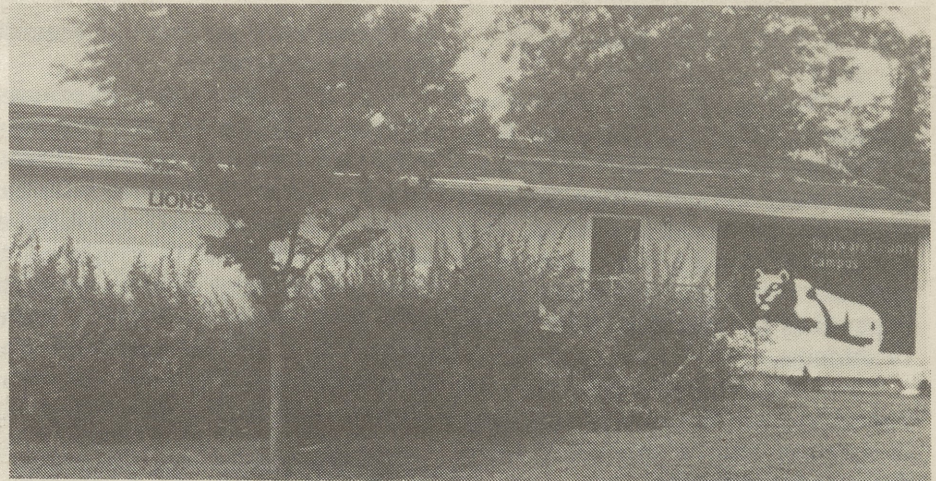
Many students returning this year are probably wondering what has happened to the Lion's Den. A popular place to hang out between classes because of the gameroom, the Lion's Den has now been reduced to a pile of rubble.

However, a new Lion's Den is being assembled over by the ROTC building and the old tennis courts. According to Acting Maintenance Foreman John McKnight, it probably won't open before late September because some work still remains.

The new modular building

will provide much need mailboxes and office space for the student government and the various clubs.

The old modular building, which was demolished by the Army Core of Engineers, has been used by both the ROTC and students since its completion about 15 years ago. Due to its age and some asbestos problems, the building was condemned and a new alternative had to be found. After some debate a new site was selected next to the ROTC's permanent building. The new units arrived in early September.



The "old" Lion's Den before it was condemned and demolished.

Photo by: DIANA MICERI

**Delco's 10th
BUS TRIP
TO
NEW YORK CITY
Sunday, November 8
7:30AM to 10:00PM Stops at
Metropolitan Museum of Art
and Chinatown
Only \$15!
See Connie Kirker in 126LLC
or Diane Wolf in 129LLC
Soon!**

Delco Campus Celebrates 25th Anniversary Tomorrow

By Eric Forte

"The Body, Mind, and Soul of Penn State Delaware County..." What was it? What is it? What will it be? On Saturday, September 19, the Penn State DelCo Campus will be celebrating the 25th anniversary of the school with a reunion party. In 1967, the campus opened on 6th and Penn streets, Chester. "The campus used to be located at an old fish market," said Marianne Rhodes. "Just imagine trying to study in a place that used to store food." Today, twenty-five years later, the campus stands in Media, where plans for the 25th year reunion party have been made.

Activities will start at 1 p.m., when the varsity soccer team plays the Ogontz campus team. At 3 p.m. volleyball and softball teams, made up of both alumni and faculty, will play. At 4 p.m., a faculty seminar will take place, discussing a theme of "The Next 25 Years." A faculty-alumni reception will follow the seminar at 5 p.m. At 5:30 p.m., a picnic dinner, serving roast meats, salads, and beverages, will begin. Following the dinner, a slide presentation featuring the history and memories of the campus will take place at 6:30 p.m. The Anniversary Reunion will finally end

with a dance in the gym, which starts at 7:30 p.m. The dance will include music from the 60's, 70's, 80's, and the 90's.

Marianne feels as if "the alumni will be enthused to see old friends and teachers. The campus as a whole, was a really close group." Overall, she thinks the day will be "a whole lot of fun."

Tickets are \$25 for adults, and \$10 for children under 12. Tickets must be bought in advance. For more information and ticket sales, see Marianne Rhodes in 111F, Main.

Pepsi: Really the 'Choice' Of a New Generation?

By Artin Armani

It is called the choice of a new generation. It also goes by its other name, Pepsi Cola. Now you too can have this softdrink in your hands to do with as you please. The fact is, Pepsi is the only cola that you can choose from according to the new contract between Pepsi Inc. and the Pennsylvania State University.

The question that stands out is, "Why did they do it?" The

been controversy. It seems that as soon as the policy went into effect the Global Awareness group was questioning the procedures used to collect and properly recycle campus trash.

"It's a joke!" one outgoing sophomore said this summer. "This campus does not properly carry out what they have proposed to do."

In response, Ms. Diane Jankowski, Campus Business Director, laid out the basics of the recycling policy:

1. The containers used to collect recyclable goods are provided by Bolinski and Sons, who also pick up these containers and dispose of the goods

2. Office paper, cardboard, aluminum cans and, though on a smaller scale, newspapers are all being collected. The collected goods are then brought to the Matinance Shed and separated, though not by students.

Ms. Jankowski stated that in an attempt to improve and rectify the Global Awareness groups' trust and fears, the campus offered to let the group itself collect and oversee the overall procedure of campus recycling. They surprisingly

declined, although it was by their request that the campus initiated a recycling program.

So the campus recycling program marches on. The program has changed little if any in its two year existence and seems to have no intentions of changing now. "Save the Earth!". At Penn State, at least on the surface, they seem to be trying.

Security Issues Are Vandalism And Parking

By Roger Lee

Security officer Andy Kearney has been patrolling the Delco campus for 25 years, since this campus was founded. Kearney, who is a former Philadelphia police officer, stated that since this is a transient campus, there have been fewer problems than students living on campus. The major problem on this campus is with vandalism. Other problems include theft and sexual crimes. New lighting will be added on pathways to help prevent this crimes.

Anyone driving on campus must get a parking permit from 116 Main Building, in the Campus Security Office. Parking permits are free. All you need is your driver's license. You will receive a \$15 ticket for parking without a permit on your car. The speed limit on campus is 15 miles per hour. Violators will be given a ticket for "Driving too fast for Conditions," and a fine of \$10. All traffic citations must be paid within 72 hours.

Continued on Page 6

Continued on Page 6