

# OPINION and REVIEW

## Editorial

### Bottom Line: Vandalism Costs!

By Angela Deal

Well, it is good to know that if I am ever stuck for something to write about I can always refer to our vandals on campus and fill up a short column.

Actually, according to Diane Jankowski, campus Business Director, we (the campus) have not been confronted with this sort of problem in a couple of years; not since a group of kids hid a slew of library books in the ceiling of the first floor of the library.

Some of the behavior which has taken place over the past month includes, to start with the foulest, smearing of feces on toilets and walls in one of the men's restrooms, soda being poured into radiators and on chairs, and cups of hot chocolate, which are luckily very small, thrown on chairs and walls in classrooms. These are only a few examples!

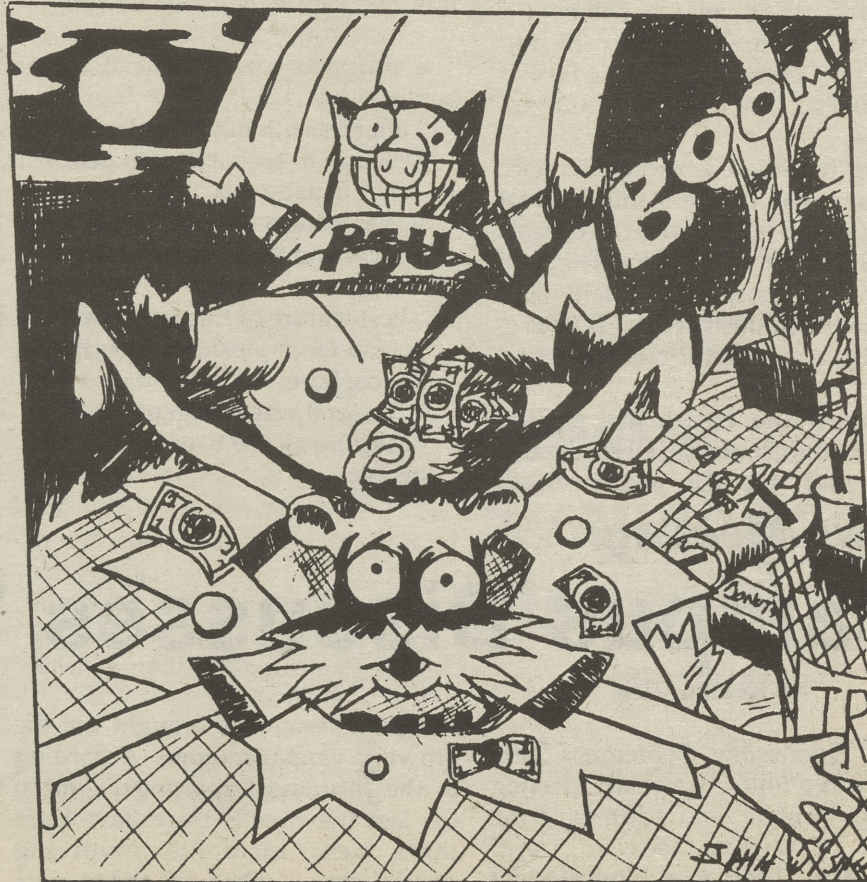
It appears that we have quite a mystery at hand. The culprits have yet to be discovered and, interestingly enough, there is speculation that they are not students.

Regardless of who these people are, the question remains whether or not we are going to tolerate this behavior. Do we as peers and members of this campus possess more power than we realize in controlling this behavior?

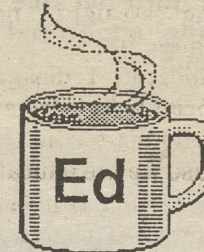
Perhaps we do. Obviously "These things are intentional," says Jankowski. If this is a product of student behavior Jankowski feels students need to apply peer pressure to halt this type of disrespect.

It is beyond a moral issue. These outrages are eventually going to affect our budgets and possibly our pride as Penn State students. It has a snowball effect.

I don't think anyone can explain why these things are happening, but I think the best solution would be for students to put their feet down. Let people know that we will not tolerate this sort of behavior.



## THE FRONT DESK



by Ed Tomezsko  
Campus Executive Officer

# THE LION'S EYE

Vol. XXIII, No. 3    The Pennsylvania State University    October 11, 1991  
Delaware County Campus

EDITOR-IN-CHIEF  
Angela Deal

ASSOCIATE EDITOR  
David Rhoades

PHOTOGRAPHY EDITOR  
Diana Miceri

### STAFF REPORTERS

Peggie Cahall	Roger Lee	Chuck Spector
Frances Callahan	Robin Longaker	Kemba Vick
David Clements	David Miller	Jamie Wismer
Shawn Cullen	Meg Muldoon	Tracy Zikowitz
Jim Doolittle	Liz Russo	
Eric Forte	Andre Smith	

### ARTISTS

Kaspar Strommer	Ali Afshari	Jamie Wismer
-----------------	-------------	--------------

PHOTOGRAPHER  
Gina Lucchesi

### ADVISORS

Barbara Daniel	John Terrell
----------------	--------------

The LION'S EYE is published Monthly during the academic year by the students of the Delaware County Campus.

Submissions are welcome from all students, faculty and staff. Material must be typed, double spaced, and submitted in the LION'S EYE mailbox located in the Lion's Den.

Letters, articles and cartoons represent only the views of their authors.

Advertisements do not necessarily reflect editorial opinion.

THE LION'S EYE regrets it cannot guarantee the return of any material submitted. All submissions are subject to editing.

"A Campaign for Excellence: The Report of the Task Force on Undergraduate Education" has a nice ring to it. The Campaign for Excellence is a play on the previous campaign for excellence which raised about \$350,000,000 for Penn State's endowment funds. Now to shift the emphasis in excellence to the classroom is an idea whose time has really come. Some of you have already read the report or have seen summaries of the report in the newspapers.

The campaign is highlighting three primary goals:

- elevation of the art and science of instruction;
- elevation of the academic atmosphere;
- elevation of student-involved learning.

Basically, the report states what we have known and have done on this campus for a long time - be excellent teachers first. Teaching is an art and there is a science about it. Good teaching is what we do best here at Delaware County Campus. This comment is born out in some data which I saw from the Admissions Office at University Park. This Admissions Report concludes "whether a student starts at a commonwealth campus (CWC) or at University Park (UP), both are equally likely to graduate after five years. A student's chances of getting into a controlled major may be better if they start at a CWC rather than UP based on the fact that they would have a higher GPA after the first two years."

The academic atmosphere is something that we can move forward on this by the students and faculty working together on the issues raised in the document. A lot of the issues are already part of our daily discussion and activities. We can do more.

The most interesting part of the Campaign for Excellence is the third goal - Elevation of Student-Involved Learning. The students can influence what goes on in class, but more importantly what goes on out of class.

I want to ask some questions of YOU THE READER and YOU HAVE TO RESPOND TO ME - 111 Main Building.

Question 1. The campaign recommends that the University (that's us) provide increased opportunities to become actively engaged with faculty in scholarly endeavors, including research. Should we keep a list of the scholarly interests of the faculty for students to see and become involved? Should we have regular programs where faculty discuss their scholarly interests? What other ideas do you have?

(Continued on Page 9)