

LION'S EYE

Vol.,XVIII, No.1

Pennsylvania State University, Delaware County Campus

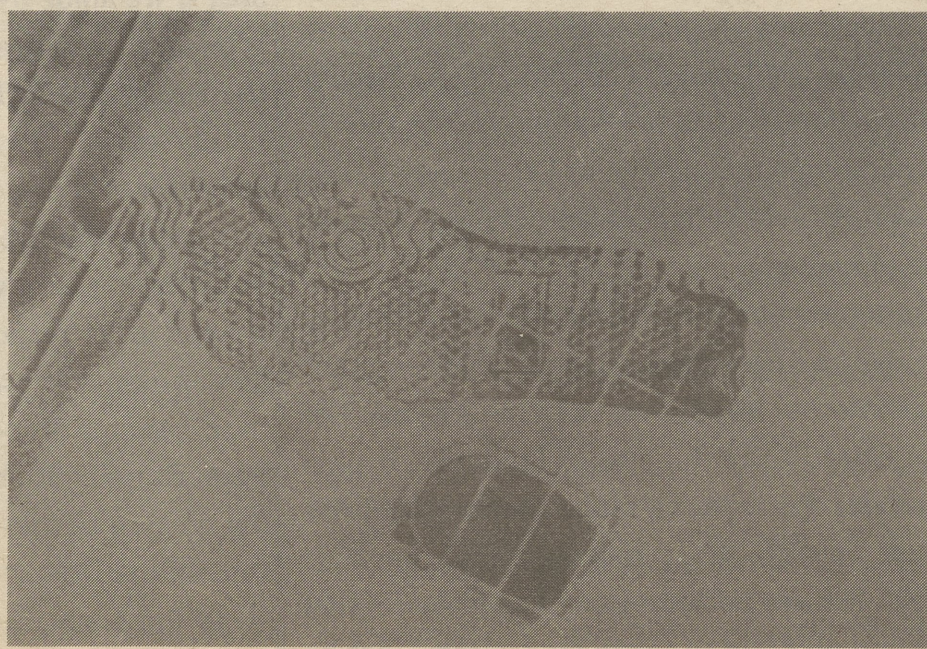
March, 1988

Vandalism becomes a major problem at P.S.U. Delco

by Linda Wahowski
Assistant Editor

Vandalism and theft on campus are problems that have been escalating and have reached astounding proportions during the past semester.

At the end of the spring semester 1987, the Student Government Association's office was broken into and their computer, answering machine, and other valuables were stolen. The second week of the fall semester 1987, the Main building lounge received new furniture; three days later someone scribbled graffiti over the new furni-



Pictured above: footprints of vandals left behind after the demolishing of the men's bathroom in the lower level of the Library/Learning center. The vandals sprayed the room with fire extinguishers.

ture.

In October, the lounge in the lower library was "trashed", meaning fires were set, tables were turned over, fire estinguishers set off, and seats slashed. The damages have cost the campus over three thousand dollars.

The campus security force has been increased to help deal with this problem. In addition, the students and faculty have been united through this crisis, and have been reporting any suspicious actions or happenings. Basically the vandalism has been hap-

pening early in the mornings before classes begins and late in the afternoon around 5 pm. For instance, the bathrooms have been vandalised in the mornings between approximately 7 and 8 am. Dr. Ed Tomesko, the Campus' Executive Officer, concluded

that "We (the campus) are getting help from students and faculty. It is refreshing to see that more are interested in the campus community as a whole."

Dr. Tomesko ascertains that it must be a small group of individuals that are the cause of this trouble. Sadly, as this paper goes to press, acts of vandalism have continued, the latest act involving 500 books "hidden" in the ceiling tiles of the lower level of the library. Dr. Tomesko has warned that violators will be prosecuted under full Pennsylvania law. Dr. Tomesko added that it is his hope that this problem will be solved.

New gym building promises more than athletic facilities



by Linda Wahowski
Assistant Editor

The new gym building will have more in it than

just the athletic department. The new building is going to have a full service cafeteria as well as a larger bookstore. It will also have

a two hundred seat Conference Center which will be used mostly for Continuing Education programs. Unlike the MODS (modular units) there will be plenty of room to hold over 200 staff and students. The new building will also have faculty offices in it. The expected date of completion is March, 1988. The facility will be fully functioning for all members of the Penn State Community by the fall semester, 1988.

IN THIS ISSUE...

Editorials Page 2

Features Page 3

Sports Page 4

Poetry CornerPage 3