

Bloodmobile

Continued from Page 2

tial donors must be turned away at this station.

Giving blood, for most people, is a painless experience. The donation process usually takes about sixteen minutes. Afterwards, the donor is asked to relax for a few minutes before he is led by a volunteer to the snack area. There he is asked to drink plenty of liquids to replace some of the liquid portions of the blood just donated. Donuts, pretzels, and homemade cookies from the Keystone Society helped to

keep donors a little while longer to regain their strength.

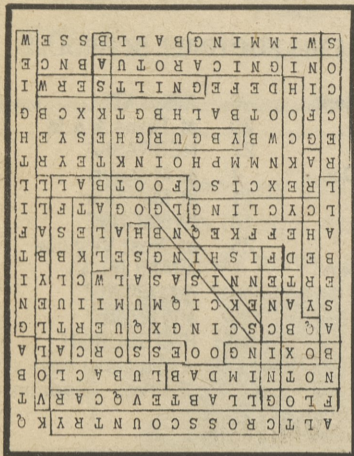
Jim Kirstien, a third-term advertising major and first-time donor, was in fine condition after his experience. Jim wanted to donate to overcome a personal fear. Although he realized that there is really nothing to it, he doesn't think he will donate again.

Not all donors feel this way, in fact, the Red Cross compiles a list of those donors interested in contributing again when the Bloodmobile is in their vicinity. Mrs. McElroy, a Red Cross

volunteer for six years, considered the Blood Drive here a success. The goal of 75 units was realized and passed, as 91 units were collected. It was the highest amount ever collected at a Delaware County Campus Bloodmobile in one day.

This program can only continue if it has the support that it needs. That means concerned citizens donating whenever possible. The American Red Cross reminds us, "We can't operate without you."

- Kathy Farrell



The Lion's Eye Photography Contest

Deadline For Entries:
Midnight Friday, April 18

Official rules available in room 203

NAME _____

ADDRESS _____

CITY _____ STATE _____ ZIP _____

TELEPHONE _____ STATUS _____

NO. OF PHOTOS SUBMITTED _____

RETURNED ENVELOPE ENCLOSED - YES NO
(Circle One)

-ONE COUPON PER PERSON-

Et Cetera

In the Nation...

Check Your Answers

WASHINGTON (AP) - College Entrance Examination Board officials, seeking to halt passage of more test-disclosure laws, said last week that high school students will now be able to obtain their Scholastic Aptitude Test answer sheets to make sure they were scored correctly. The 1.5 million high school juniors and seniors who take the SAT each year, a requirement for undergraduate entrance to most American colleges and universities, will be able to buy back the answer sheets and the scoring key for a fee "well under \$4." Test questions will not be returned.

The board, which has its headquarters in Princeton, N.J., also will make public each fall a Scholastic Aptitude Test used in the previous year, along with statistics on how it was scored, the standard error of measurement, and other information. It also plans to increase efforts to weed out test questions that appear to be racial, culturally, or sexually bias.

At University Park...

Board of Nukes

University President John W. Oswald recently accepted a position on the board of directors of General Public Utilities, parent company of the operator of the Three Mile Island nuclear power plant, the Daily Collegian reported. Oswald was elected to the nine-member board for an indefinite period effective this month.

Metropolitan Edison is operator of the crippled TMI plant in Middletown, Pa., which is also the home of the University's Capitol Campus.

Oswald is the only member of the board involved in education. Other board members have backgrounds in business and government, a company official said.

Room, Board Up

The University Board of Trustees approved a \$55 per term increase in room and board costs for next year at its meeting last month. The cost of a standard double room will be \$610.

The 9.9 percent hike is the highest since 1975-76, when room and board increased 12 percent. The \$55 per term increase will affect all types of rooms, except for some graduate housing and temporary space.

The trustees approved the hike with no discussion almost two weeks after students at University Park submitted their dorm contract applications.

- The Daily Collegian

women's medical center

Confidential Service

birth control counseling free early detection pregnancy testing outpatient abortion facility

(215) 265-1880

20 minutes from Philadelphia

DeKALB PIKE AND BORO LINE ROAD
KING OF PRUSSIA, PA 19406

INFECTIOUS MONONUCLEOSIS PATIENTS

If you have mono, or have been diagnosed within the last two weeks, you are urgently needed for a research program. Earn up to \$50 per week.

Call Mrs. Roman

922-7810

for more information

Delaware County Campus

The Pennsylvania State University



Continuing Education

THERE'S STILL TIME TO REGISTER FOR THE FOLLOWING SEMINARS THAT WILL MAKE SPRING *SPRING*:

1. Cinema As Liberal Art

Enjoy four great movies and then expand on by discussing your ideas with other viewers. Films to be shown are masterpieces of international cinema.

Tuesday: April 22, 29, May 6, 13; 6:45 to 9:15 p.m.

Cost: \$25.00 per person for entire series of four sessions

Instructor: Dr. Robert Ginsberg, Professor of Philosophy, Penn State Univ.

2. Fallen Woman and New Woman

Changing Images in Victorian Art and Literature. Against the Turbulent backdrop of Victorian England, the Fallen Woman are discussed in art, literature and the theater.

Mondays: April 28, May 5, 12, and field trip (to be announced) 7:00 to 9:00 p.m.

Cost: \$25.00 per person for entire series plus field trip

Instructor: Anne Sue Hirshorn, Instructor in Art, Penn State University

3. Effective Parenting

To provide some basics about child rearing and discipline, Fathers and mothers (and any others) are encouraged to attend this seminar and discussion of new approaches.

Wednesdays: April 23, 30, May 7, 14; 7:00 to 9:00 p.m.

Cost: \$20.00 per person for entire series of four sessions plus textbook

Instructor: Dr. James Swanson, Assistant Professor of Educational Psychology, Penn State University

Come out to Penn State's Delaware County Campus. It's your chance to join Friends and Neighbors, Sharing Ideas and Learning together. To Register for the seminars, contact Phyllis Payne in the Continuing Education Office.

The Pennsylvania State University
Delaware County Campus
25 Yearsley Mill Road
Media, PA 19063

For more information, call: 565-3300, ext. 22

In The Area...

Save Gas

The Governor's Energy Council offers a free pamphlet "How to Save Gasoline and Money," with tips on reducing driving by 15 miles a week and on cutting gasoline bills by 40 percent through careful planning. Experts estimate that 5.5 billion gallons of gasoline could be saved annually if every driver in the nation reduced consumption by 5 percent.

For copies of the booklet, write to the Governor's Energy Council, 1625 N. Front Street, Harrisburg, Pa. 17102, or call the Energy Conservation Hotline between 8 a.m. and 5 p.m. weekdays at 1-800-822-8400.

CPR Course Offered

Riddle Memorial Hospital, Rte. 1 in Media, will sponsor a free six-hour course in Cardio-Pulmonary Resuscitation (CPR) this month. Certified by the American Heart Association, the course is open to the general public and teaches artificial respiration and care of emergency heart cases.

There will be two three-hour classes - the first to be held at the hospital on Monday, April 21, and the second on Thursday, April 24. Both begin at 7:00 p.m. and end at 10:00 p.m. Registration will be on April 21 immediately preceding the first class. The class will be limited to the first 30 adults to register (it is advisable that you arrive early).

For additional information, call the hospital at 566-9400.

TV/12 Auction

Once again it's time for the Annual WHY TV/12 Auction, ten days of bidding and buying with all proceeds going towards the support of PBS, the public television station network, TV/12, and WUHY-FM Radio. The Arts and Antiques Auction will be held on the first four evenings, May 6 - 9, 6:00 p.m. to 11:00 p.m. An extraordinary collection of paintings, sculpture, rugs, crafts, rare books, autographs, stamps, coins, and more will be auctioned off on those days. The General Merchandise Auction will take place on the evenings of May 12 - 17, 5:00 p.m. to 12 midnight. Guest and celebrity auctioneers will auction off items like televisions, theatre tickets, camping equipment, shopping sprees, restaurant forays, and more. All contributions are tax deductible. For more information, call 243-2258.

Gardens for Rent

The Delaware County Department of Parks and Recreation has garden plots available to rent for the summer.

"Green World," the county's gardening program, has 500 20-foot by 25-foot plots for rent for \$6 a season at Rose Tree Park, at Fair Acres, and adjacent to the Delaware County Campus here.

Plots are available on a first-come, first serve basis. For further information, contact the park office at 891-2391.