



## Spring Week Activities Planned

Spring Week is coming, April 28 — May 2. The traditional week is full of competitions, special events, and other exciting activities.

According to several officers of student clubs and organizations on campus, plans are underway for the annual Spring Week Picnic, a kit-flying contest, a talent show, Monte Carlo Day, a coffeehouse, a drama presentation, the annual Clothesline Art Exhibit, a Karate demonstration, a Spring Week T-shirt Sale, the annual Awards Ceremony, a Mud Football Game, a photography exhibition, and much more.

The annual Spring Week Picnic, featuring free food, live music, and faculty/student sports, will be held Thursday, May 1. The Awards Ceremony will take place in room 101 on Wednesday, April 30 at 12:00 p.m. The Second Annual Clothesline Art Exhibit will be on display Monday, April 28 through Wednesday, April 30. Spring Week T-shirts will be on sale throughout the week.

The movie "Dirty Harry," starring Clint Eastwood, will be shown in room 101 Monday, April 28 at 11:00 a.m., Tuesday April 29 at 12:15 p.m., and Wednesday, April 30 at 1:40 p.m. In addition, the film "Reefer Madness" will be shown in the Student Lounge Monday, April 28 at 1:30 p.m., Tuesday, April 29 at 8:45 a.m., and Wednesday, April 30 at 9:30 a.m.

If you're interested in volunteering, your help is needed in the following areas: The Clothesline Art Exhibit needs students to help with set-up — contact Dean Richard Shaffer. The Undergraduate Student Association needs volunteers for Monte Carlo Day and several other activities — stop by the U.S.A. Office.

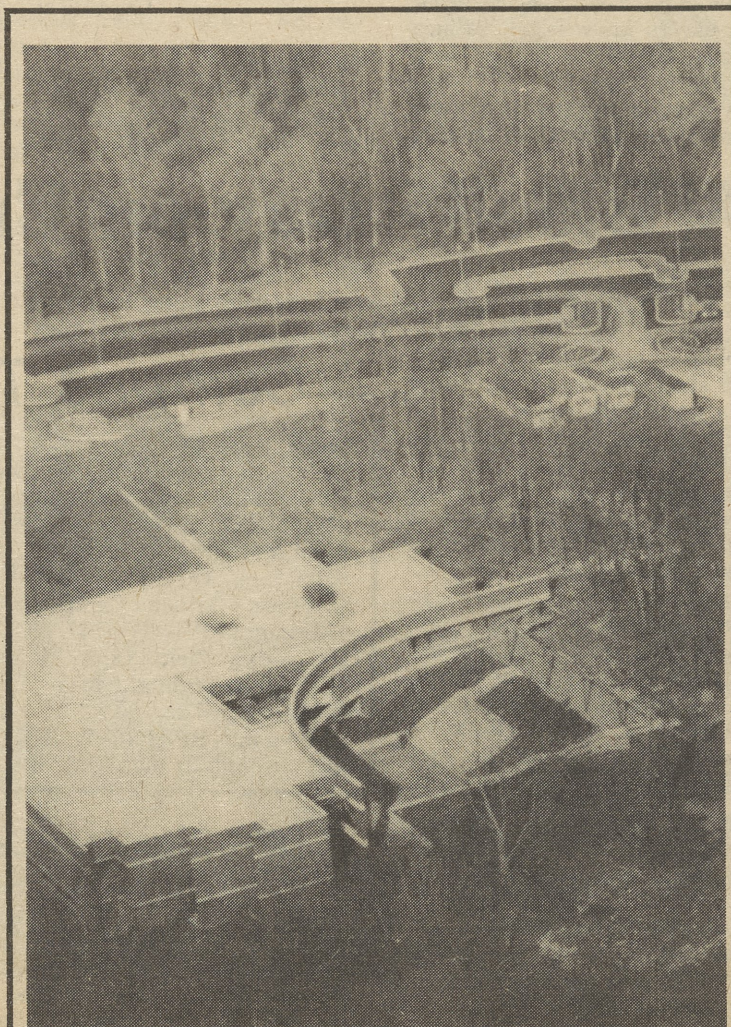
## Faculty, Staff Participate In Speakers Bureau

In 1977, Delaware County Campus faculty and staff members put their minds together and came to a conclusion. They formulated that with their knowledge and skills, they might be helpful to others if they would speak to the general public. It was with this initial thought that the Speakers Bureau was formed.

The Speakers Bureau originally started with just twelve participants. The number of members gradually grew, and this year, there are 30 speakers covering nearly 100 topics.

The topics range from Art to Women's liberation to Philosophy to Science to Career Counseling.

The speakers are highly-qualified and informative experts in their respective fields. They all participate on a



(Photo by Tom Watson)

Aerial view of the nearly-completed Library-Learning Center on campus shows the building and the new parking lot adjacent to the tennis courts.

The completion date for the new complex has been extended to June 30, 1980. University officials said the new center will be open by Fall Term if the new completion date is met. The construction, which began July, 1978, was originally scheduled to be completed by March 3, 1980.

According to an official from the Pennsylvania Department of General Services, which oversees the project, initial excavation of the building location and inclement weather caused the construction to fall behind schedule. Only general contracting inside the structure remains to be done.

## Photo Licences are Here

The Pennsylvania Department of Transportation (Penn DOT) began its photo-licensing program throughout the state March 28.

The Delaware County photo station is on the Delaware County Community College campus.

Motorists whose licenses are renewed on even-numbered years will be processed first. Odd-numbered operators will be processed the following two years.

Motorists' renewal applications will indicate whether they have to get their photos taken," a PennDOT spokesperson said.

Currently, photo-license programs are being operated in 42 states and the District of Columbia, according to PennDOT Secretary Thomas D. Larson.

"Citizens nationwide have found photo licenses to be a valuable means of preventing the fraudulent use of lost or stolen licenses," Larson said. "In addition, photo licenses provide a convenient method of positive identification when traveling or conducting business."

Present licenses must be renewed every two years. The new licenses will only be renewed every four years, with the renewal fee remaining at \$5.00 per year. There will be an additional charge of \$1.50 to cover the cost of the photograph. The four year license will cost \$21.50.

For more information on the Speakers Bureau, contact the Office of University Relations at 565-3300, ext. 18.

— Judy Sealy

## Ex-UPI Chief Substituting Here

A seasoned newsman backed by 27 years experience with the United Press International wire service has come to the Delaware County Campus on a temporary teaching assignment.

Ed McFall, married and the father of 3 children, is substitute teaching the freshman journalism class for Spring Term, while Lynn Martin Haskin, Assistant Professor of Journalism, finishes her dissertation for her Ph.D.

For McFall, this is just one more job in his busy schedule. He is also part-time journalism instructor at Temple University, where he has taught for the past 7 years.

However, in his seeming affinity for colleges and universities, McFall spends much of his time at yet another educational institution.

He is Director of the News Bureau at the University of Pennsylvania, a position he has held since April 1979, when he left the UPI as a 10-year veteran manager of the Philadelphia Bureau.

He took the U. of P. job because he was given a good offer and because, after 27 years with the wire service, he was getting bored.

"I sort of knew what to expect," he said.

"I wanted to see if I could be skilled at some other aspect of

journalism."

However, at the same time he decided to leave UPI, Three Mile Island erupted, the type of incident reporters dream of covering.

McFall reminisced jokingly, "I almost felt as if I had made the wrong decision, because I had announced my decision before TMI occurred."

He would have looked forward to covering the event.

McFall, a Ridley Park resident, is not unfamiliar with the Penn State system. He attended the Delaware County Campus before it was moved from a Chester facility to Lima in 1970.

After one year, he went to University Park, where he stayed half a year, then transferred to Temple University, where he received his bachelor's degree in Journalism in 1954.

Involved with journalism his entire life, McFall began working fulltime for the UPI while he was a fulltime sophomore at Temple.

Since then he has not lost his deep interest in the profession and still misses the wire service.

He feels he has benefited greatly from the journalism profession and stated assuredly, "If I had to do the same damn thing over again I'd do it the same way."

— Carolyn Horning

## Financial Aid Answers

The Pennsylvania Higher Education Assistance Agency (PHEAA) has three toll-free hotlines for college students who need immediate answers to questions on federal and state financial aid programs.

The number for information on state grants to students is 1-800-692-7435, and the number for information on student loans is 1-800-692-7392.

Information about the federal Basic Educational Opportunity Grant (BEOG) can be obtained by calling 1-800-553-6350.

Financial Aid information is available on campus from Dean Richard Shaffer, in the Student Affairs Modular Building.

Shaffer reminds all students that the deadline for 1980-81 state grant applications is May 1, 1980.

## Going To U.P.?

If you're planning a trip to University Park this term, you may want to attend a sports or entertainment event.

Admission to all spring sports events at the main campus is free, except that a student I.D. card or \$1 is required for admission to baseball games.

Tickets for Artists Series performances may be purchased by mail or by phone with a credit card. Make checks payable to: The Pennsylvania State University and mail orders to: PSU Artists Series, Pine Cottage, University Park, PA 16802. For phone orders or a listing of Artists Series events, call (814) 863-0255.

University Resident Theatre Company plays are \$2.75 for students on weeknights and \$3 on Friday and Saturday. Tickets may be obtained from the Resident Theatre Box Office, 137 Arts Building, University Park, PA 16802. Phone: (814) 865-1884.

Special events during Spring Term include the Phi Psi 500 this Saturday, April 19, and Gentle Thursday, April 24.

For a taped message of daily University Park events, call (814) 863-1100.

## In This Issue...

- \* Word Find, Page 2
- \* Tennis Team Action, Page 3
- \* Et cetera, Page 4

