



Office of the Director to be Evaluated

The Office of the Director of the Delaware County Campus will be evaluated in the coming year to determine its major

strengths and weaknesses. The ultimate objective of the review is to improve faculty, staff, and administrative relationships at the campus.

Phase one of the project took place October 12 as Robert G. Quinn, Dean of Academic Instruction for Commonwealth Campuses, presented an explanation of the evaluation process to campus faculty and staff members. Campus personnel completed questionnaires concerning their views on communication, employment, staff relationships, and policies at the campus.

Results from the questionnaires will be used as a basis for the actual evaluation by a committee of professors, administrators, and a student representative from several Commonwealth Campuses and University Park. It is expected that the Committee will visit the campus some time in February. The committee will then submit a report to Dean Quinn, who will in turn review the evaluation with faculty and staff members here.

According to Campus Director John D. Vairo, internal reviews of campus operations

have taken place in the past. Vairo notes that he is always "anxious to know how we're doing on an ongoing basis. We really have evaluations everyday."

Vairo has submitted a 50-page report on campus operations to the committee.

"It's (an evaluation) a healthy thing for any organization," Vairo adds.

In addition to the Delaware County Campus, the committee will also review the Office of the Director at the Fayette and Shenango Valley Campuses.

—Harry MacCartney



(Photo courtesy University Relations)
Campus Director, John D. Vairo

Artist and Lecture Series

Mark Twain Sketches to be Performed

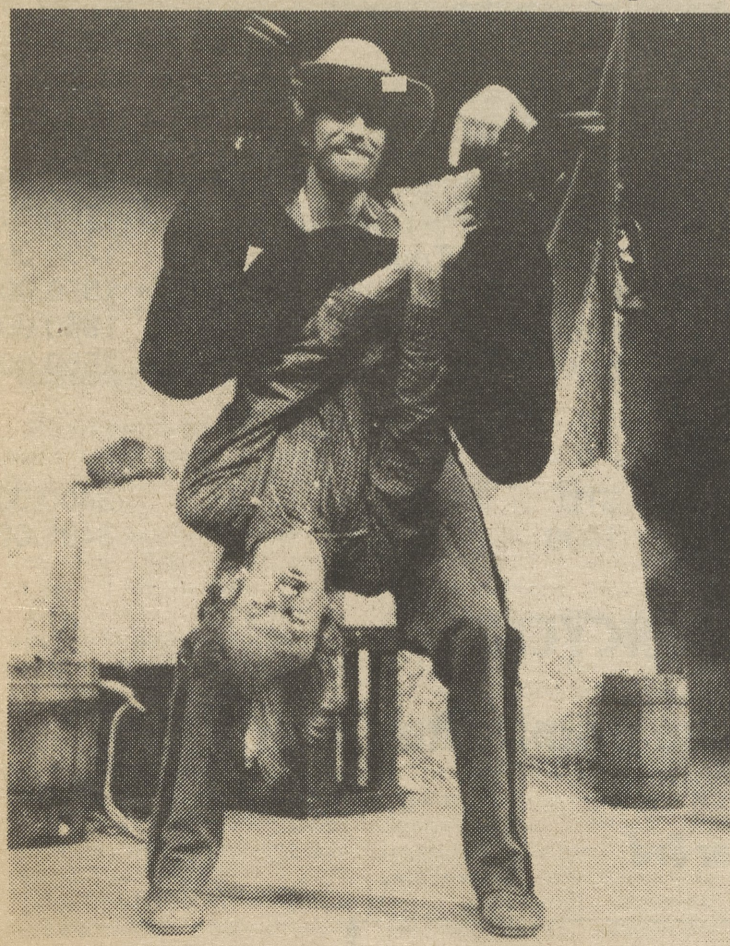
The Artist and Lecture Series Committee will present the Chamber Repertory Theatre performing its nationally acclaimed live production of *Mark Twain Sketches* Tuesday, October 30 at 2:15 in room 101.

Mark Twain Sketches is an outrageous stage production

based on selections from the writings of America's greatest humorist. The Chamber Repertory Theatre has toured twenty-six states pleasing audiences of all ages and is now in its third consecutive year of performing the Twain play.

Set in a small town on the

Continued on Page 5



(Photo courtesy Chamber Theatre Productions)
The Chamber Repertory Theatre, Boston's continuously touring professional theatre company, will perform its nationally acclaimed stage production of *Mark Twain Sketches*, Tuesday, October 30 at 2:15 p.m. in room 101.

See Snow? Listen for 495

'Snow Days' added to Schedule

The unexpected snowfall on October 10 served as a reminder of last year's harsh winter; and perhaps provided a warning of the long, cold winter to come.

Last February 19, a near-record fourteen inches of snow blanketed the Delaware Valley area and forced the closing of the Delaware County Campus. Several students, faculty, and staff members were inconvenienced when the term break was shortened to make up for cancelled classes.

As a result, the schedule for Winter Term 1980 will include two extra days for snow emergencies.

Winter Term classes will end Thursday, December 20 for the holiday recess and will resume Wednesday, January 2. This shortens the break by two days from the original plans.

The last day of classes for the Winter Term will depend on the weather. If there are no all-day cancellations, classes will end Monday, February 18.

One all-day cancellation will move the last class day to Tuesday, February 19. The loss of two days will move the last day of classes to Wednesday, February 20.

Final examination dates will not change from February 21-25, as presently scheduled. If

neither February 19 nor February 20 are needed to make up lost snow days, they can be used as study days for finals.

For days in which partial cancellation is necessitated (where one or more periods may be lost but not the entire day), the next Saturday will be used for make-up of lost periods.

If the abbreviated schedule is used on any day, classes will begin at 9:30 a.m. and all periods will be shortened, with no make-up day being scheduled.

The following radio stations

will provide information on campus operations during winter emergencies: KYW, WCAM, WCAU, WDAS, WFIL, WFLN, WHAT, WIBG, WIP1-FM, WIP, WPEN, WTMR, WWDB-FM, WYSP.

The radio code for daytime class cancellations is 495. The abbreviated schedule code is 6495 and the evening class cancellation code is 2495.

Students are advised to listen for radio announcements rather than to call the campus.

—Carolyn Horning

Enrollment Down Here

Although enrollment throughout the University increased this year, the number of students attending the Delaware County Campus this Fall is down from last year.

According to figures released by the Office of Student Affairs, Fall Term enrollment at the campus totals 1,134. Preliminary figures show that 53,680 are enrolled throughout the University. Enrollment at University Park totals 31,792.

The majority of students at the Delaware County Campus reside in Delaware County (781), however, the number is down 3.4 percent from 1978. The second largest source of students at the campus is Chester County (211), up 6.6 percent from last year.

COUNTY	1978		1979	
	No.	%	No.	%
Bucks	9	.8	5	.4
Chester	141	12.0	211	18.6
Delaware	852	72.3	781	68.9
Montgomery	47	4.0	31	2.7
Philadelphia	123	10.4	81	7.2
Others	6	.5	25	2.2
	1178		1134	

Monte Carlo Night a Good Deal

On Friday, October 12 students shot craps, sat in on poker and blackjack games, and laid bets on a roulette wheel. Casino fever, complete with cigarette smoke and loud music, was in the air as the Student Activities Commission (SAC) sponsored Monte Carlo Night in the student lounge.

Following three and one-half hours of gambling with bogus money and a last half hour of frantic unlimited betting, several prizes were auctioned off to the gamblers bidding the most money cash.

Prizes included Philadelphia Eagles tickets, dinner for two at Le Crepe restaurant, a one-month pass to Kirkwood Spa,

Continued on Page 5

In This Issue...



- Campus Observer, page 4
- Art in the Area, page 5
- Penn State Football, pages 6 and 7
- Campus Timetable, page 8