

## Cooperative Extension Service Is For Your Use

The Delaware County Cooperative Extension Service of the Pennsylvania State University was established in 1916 to help all county residents to help themselves in areas of agriculture and family living.

The Extension Service is sponsored through the cooperation and funds of the County, State, and Federal Governments.

Research done at Penn State as well as at other land-grant universities and the U.S. Department of Agriculture is the basis for the up-to-date information in both Agriculture and Home Economics provided by the Service.

Horticultural and Agri-

cultural information is available for home gardening, soil testing, livestock and crop production, pesticides, and more. Extension home economists provide help in all areas of family living, including nutrition and food buying, consumer education, and home furnishings.

Youth development through 4-H clubs is another important part of the Extension Service.

You can take advantage of these educational services and programs by calling, writing, or visiting the Delaware County Cooperative Extension Service, Toal Building, Second and Brange Streets, Media, PA 19063, (215)891-2491 or LO 6-0142.

## Widener Now A University

CHESTER, Pa. — Widener College in Chester, Pennsylvania — the city in which the Penn State Delaware County Campus was originally located — is now Widener University, as of July 1, 1979.

According to a spokesperson, the new name better describes what Widener has to offer students in higher education.

Dr. Clarence R. Moll, President of the educational institution for the past 20 years, has been through two of the school's three name changes.

In 1821, John Bullock, a leading Quaker, founded the original select school for boys in Wilmington, Delaware. The school introduced military instruction in 1858 and four years later became known as Pennsylvania Military Academy. The early curriculum extended from preparatory through college. In 1892, the school, by then located on its present Chester campus, assumed the name Pennsylvania Military College.

The long tradition as an exclusively military college ended in 1946 with the admission of

returning World War II veterans as non-cadet students. And, in 1966, an even longer tradition was broken when the formerly all-male institution admitted its first female students. To reflect this evolution into a coeducational, predominantly liberal arts college, the name was changed to PMC Colleges (Penn Morton the designation for the civilian component, Pennsylvania Military for the cadet enrollment).

In 1972 as a result of a series of academic and philosophical changes, the institution retired the colors of the cadet corps and adopted the name Widener College.

Widener College is now the four-year undergraduate component of the University with graduate offerings and continuing education also being offered under the auspices of the University. Brandywine College is the two-year component, and the Delaware Law School is the graduate professional component. The Brandywine College and Delaware Law School campus is located off Rt. 202 in Wilmington, Delaware.

## Traffic Jam Affects Campus

Continued from Page 1.

because its deteriorating condition was hazardous to motorists.

Original plans called for the deck of the bridge to be lifted in one piece when removed, but instead the deck was blasted with over 400 sticks of dynamite last month.

The state's plans stipulate replacement with a two-lane structure. Middletown Township Council had opted for a fourlane replacement.

"The cloverleaf has a terrible traffic problem," Township

Solicitor Joseph Lancellot was quoted as saying. "It's absurd to replace it with a two-lane bridge," he added.

But according to a PennDOT official, the replacement is for "safety reasons, not for traffic."

It is not definite yet as to how long the project will take. Detour routes have left traffic in the area bottlenecked.

PennDOT had planned to begin work last spring, but Rose Tree-Media School District officials suggested the work be delayed until summer to avoid school traffic.

## Lending An Ear

Work on the broken ear of the Nittany Lion Shrine, at University Park, is expected to be completed by this week.

The shrine was damaged by vandals last November. In the past, the Lion has been the target of minor defacing - such as a coat of orange paint or blue and gold stripes, courtesy of visitors from Penn State's opponent colleges on football weekends - but has never been damaged to this extent.

The Lion was a gift from the class of 1940. The statue was carved from a 13-ton piece of limestone and cost \$5,340. The University symbol was vandalized following last year's Penn State-Pitt game at the campus.

## Faculty Spotlight

### Athletic Director Dan Doran

Assistant Professor of Health and Physical Education Dan Doran began his career at the Delaware County Campus of the Pennsylvania State University in 1970 and he plans to stay here.

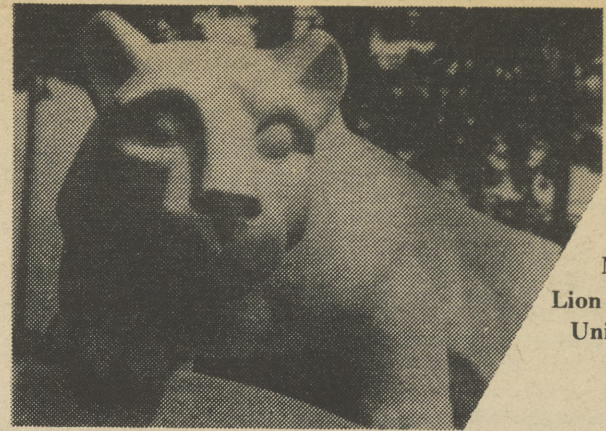
Doran is Athletic Director and Coordinator of the Department of Health, Physical Education and Recreation (HPER) at the campus.

Last year Doran served as faculty advisor of the Outing Club, in its first year as a University-recognized organization.

Doran, who teaches Health and Physical Education classes at the campus, comments that he probably enjoys teaching Self defense and Camping the most. Those courses offer "more flexibility to students and are not as rigid as other PE courses," according to Doran. The Camping course includes over-night trips during the term to provide the "total camping environment."

Doran is head swimming coach and assistant soccer coach at the campus. He also coaches soccer in the Rose Tree-Media Boys' Club.

The athletic director explains that the sports program at the Delaware County campus is limited. All coaches at the campus are also members of the faculty and do not receive additional pay for coaching. Because the coaches must double as instructors, there is a shortage of time and personnel - not to mention funds - for addi-



The Nittany Lion Shrine, University Park

The Lion's German-born sculptor, Heinz Warneke, 84, was called in from his home in East Haddam, Conn. to mend the ear.

"It's very depressing," he

said when he saw the damage. "They (the vandals) must have used a sledgehammer to do it."

Warneke prepared a clay model of the ear which will be cut into stone.

### DCCC Starts Late

The start of classes at Delaware County Community College was postponed until September 10 as a result of a teacher's strike.

The work stoppage was in effect as more than 6,000 students registered for classes at the end of August.

Teachers, librarians, counselors, and other personnel turned down a proposed contract the first week of September. Their two-year contract expired August 17.

Faculty members have picketed the three entrances to the school on Route 252 in Marple Township, carrying signs that said, "No contract, no work."

A teacher with a masters degree at the college earns \$18,000 a year.

### Lion's Energy Eye

#### Tire Pressure Saves Gas

Keeping your car's tire pressure up to "full load" as recommended in the owner's manual can save you as much as 5 gallons of gas out of every 100 you buy.

Although you'll get a little firmer ride, the tires are likely to last longer.

Check pressure when tires are cool (invest in a good gauge since gas station indicators are often unreliable).

Note: When tires are hot, pressures build up; it's normal.

#### Free Car Pool Ads

As a service to our readers, the *Lion's Eye* would like to help you cope with the current energy situation by offering you FREE CAR POOL ADS in our classified section.

Your message is limited to 4 lines (20 words). Use the coupon in today's classified section and specify "Free Car Pool Ad."

Check our free car pool ads in each issue of the *Lion's Eye*.

## Did You Know?

... The largest library of the world is the State V.I. Library of the USSR in Moscow. Founded in 1862, the facility holds 27,000,000 volumes. The largest U.S. university library is at Harvard University, with more than 9 million volumes. Penn State's Pattee Library at University Park ranks 28th in the Nation with over 2 million catalogued volumes. The Delaware County Campus library holds approximately 27,000 volumes.

... The English language contains about 490,000 words - plus another 300,000 technical terms. That represents the most words in any language, but it is doubtful if any individual uses more than 60,000.

## In Other Eyes . . .

. . . Two Years Ago

The following stories appeared in the September 26, 1977 issue of the *Lion's Eye*.

... Undergraduate Student Association President Norman Aamodt and Campus Director John Vairo have started negotiations with various food service companies to replace the vending machines in the modular building with hot food service. The service would be provided to students at a reasonable cost.

... The Pennsylvania State University is facing serious financial problems, which extends from the inability of the State legislature to secure the \$300 million budget recently passed. According to PSU President John W. Oswald, the Legislature "took all the funds that are normally appropriated to Penn State, Pitt, and Temple and (used) this money to meet the needs of other State responsibilities."

... *Cheap Trick* released its second album, *In Color*, on Epic Records and Tapes. *Beach Boys* drummer Dennis Wilson, brother of Brian, has decided to embark on a solo career with his first project being *Pacific Ocean Blue* on Caribou Records and Tapes.

MEDIA OFFICE SUPPLY COMPANY  
COMMERCIAL and SOCIAL STATIONERS

11 — 13 West State Street  
Media, Pennsylvania 19063

566-6250

School's open  
drive carefully 