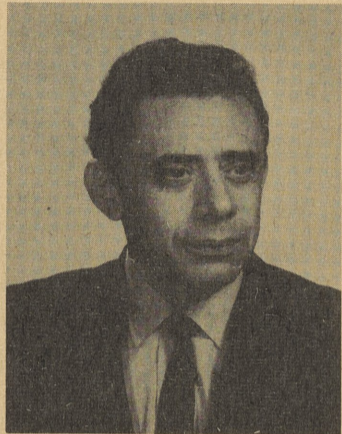


DEAR PENN STATE STUDENT...



JOHN D. VAIRO
Director

Greetings and welcome to Penn State's Delaware County Campus!

I wish to congratulate you upon your acceptance into The Pennsylvania State University, one of the world's great universities. We are very proud of Penn State and know that, through the years, you also will come to hold it in high esteem.

Our faculty and staff are eagerly looking forward to having you here as a student. Working together, we believe we can make your stay here intellectually productive and socially enjoyable. We have dedicated ourselves to developing an academic program which will be of the highest quality. However, we alone cannot do the job that must be done in order for you to take your place in society as a productive citizen. Your cooperation and all the effort you are able to bring to us are needed to do the job that has to be done. This should be your commitment, as I am sure it is.

My hope is that you are looking forward to coming here as much as we are looking forward to having you.

Best regards.

Sincerely,
John D. Vairo

STEPHEN CIMBALA NEW ASSOCIATE DIRECTOR, ACADEMIC AFFAIRS

Dr. Stephen J. Cimbala, assistant dean for undergraduate studies at the State University of New York at Stony Brook, has been named associate director for academic affairs at The Pennsylvania State University's Delaware County Campus, effective August 1st.

His appointment was announced jointly by John D. Vairo, campus director, and Dr. Robert G. Quinn, dean of academic instruction for commonwealth campuses.

Dr. Cimbala is the first person to hold the position of associate director for academic affairs at any Penn State campus. This is a new position that has been designed to enhance the total academic program of the campus, including both the resident education and continuing education programs.

Cimbala holds a B.A. in Journalism from Penn State and an M.A. and a Ph.D. in political science from the University of Wisconsin. Along with the appointment as associate director, he will hold the academic rank of associate professor of political science.

Cimbala was selected after an examination of several candidates by an advisory search committee composed of faculty, administrators, and students.

Cimbala has been assistant dean for undergraduate studies at Stony Brook since 1971. Prior to that time, he was assistant professor of political science at that campus.

As assistant dean he has

developed programs in administrative science and other interdisciplinary programs dealing with social science and liberal arts. He is the author of a number of published articles in the field of political science.

STUDENT LOAN FUND

The Bernreuter Emergency Loan Fund has been established for students at the Commonwealth Campuses throughout the State. These monies are available for students who have an immediate need for short term loans. The maximum amount is \$50.00 which can be used for as long as 30 days. The only limitation on the use is that it not be used for tuition.

The Media Rotary Club has given \$2,000.00 and the Chester Rotary Club has given \$500.00 to another loan fund. This \$2,500.00 is available to students who need a maximum of \$100.00 for 60 days.

If you need a loan, contact the Dean of Student Affairs Office, 212.

CORRECTION TO ORIENTATION SCHEDULE

Thursday Nite Movie, September 6th at 8 and 10 - "Play Misty For Me" with Clint Eastwood.

NEW FACULTY AT DELCO

MARIETTA R. RANERI -

assistant professor of English. A.B. in English and social sciences, and M.A. in English, State University of New York at Albany; Ph.D. in English, The Pennsylvania State University. Formerly teacher of English at Bethlehem Central High School, Delmar, N. Y., and teaching assistant at Penn State. Member, Pi Gamma Mu, social science honorary; Kappa Delta Epsilon, education honorary; Signum Laudis, scholastic honorary; and Phi Kappa Phi. Awarded graduate fellowship and graduate dissertation fellowship at Penn State. Joined campus faculty in 1973.

FREDERICK C. CHOW -

instructor in economics, B.A. in political science and law, Taiwan University; M.A. in labor and industrial relations, University of Illinois; Ph.D. in economics, The Pennsylvania State University. Formerly teaching assistant and part-time instructor of economics at Penn State. Joined campus faculty on one-year special appointment in 1973.

GARY J. ICILLIAN -

assistant professor of biology. A.A.S. in food technology, State University of New York at Farmingdale; B.S. in zoology and M.S. in biology, Kansas State University; Ph.D. in dairyscience, The Pennsylvania State University. Formerly laboratory and graduate teaching assistant at Kansas State, and research assistant, Penn State. Member, Phi Kappa Phi and Society for the Study of Reproduction. Joined campus faculty on one-year special appointment in 1973.

LIKE IT IS

This column will be a regular feature in the *Lion's Eye*. Hopefully, it will be as entertaining as it is informative. Throughout the year I will pass on my comments concerning what's happening in the University and report on some behind-the-scene activity taking place on campus.

Every month there is a meeting held at University Park at which all the commonwealth campuses attend as part of the Council of Presidents (C.O.P.) Program. The purpose of the program is to provide an environment for an orderly analysis of the direction of the university community. The analysis includes determination of problem areas, offering alternative solutions to areas of concern, and providing an appropriate mechanism for implementation of these solutions. In general, such programs have provided participants with a better understanding of the complexities within



SGA President Bob Joseph will represent Delaware this year in Council of Presidents Program.

the university community. C.O.P. acts as an advisory board to University President, Dr. Oswald. Through such a sounding board, student sentiments are voiced and taken into consideration. One such appeal was made to Dr. Oswald in the form of an Official Policy Statement concerning the recent elections to the University Faculty Senate, a legislative body within the University. I present it to you as an example that C.O.P. and Bob Joseph are working for you. Following is the context of that statement...

COUNCIL OF PRESIDENTS OFFICIAL POLICY STATEMENT

The Council of Presidents wishes to express its dissent of the recent elections of student senators to the University Faculty Senate, for the following reasons:

1. Commonwealth Campuses were given insufficient time to inform our students of their eligibility to become candidates for student senators to the University Faculty Senate, for conducting proper elections.
2. Commonwealth Campuses were given insufficient time to adequately publicize and set up the proper apparatus for conducting proper elections.
3. Commonwealth Campuses were given insufficient time to adequately publicize the qualifications of the candidates to the University Faculty Senate.
4. Commonwealth Campuses received no information regarding the elections from the following colleges:

a. Agriculture	d. Human Development
b. Arts and Architecture	e. Physical Education
c. Earth and Mineral Sciences	

In view of these circumstances and the election results, we cannot possibly condone these elections as being representative of either the students at University Park or at the Commonwealth Campuses. We also believe that the very voting rights that were to be protected with these elections have been stripped away. In an attempt to enfranchise Commonwealth Campuses, these elections saw the almost total disenfranchisement of the Commonwealth Campus students. The Council of Presidents officially condemns these unjust elections.

We would also like to restate some of the reasons why we believe that Commonwealth Campus students should have their own representation in the University Faculty Senate.

1. The academic environment at the Commonwealth Campuses is different than that of University Park, creating different problems for the Commonwealth Campus student. For example, course selection is very limited, and advising is often done by a faculty member who is not in the student's college or major.
2. The relationship between faculty and students at the Commonwealth Campuses is different than that at University Park. Due to the smaller ratio of faculty to students, the students have, and take advantage of, a better opportunity to add constructive suggestions in regards to bettering curricula, academic advising, etc.

The Council of Presidents firmly believes that since the University Faculty Senate has seen it feasible to give Commonwealth Campus Faculty their own representation in the Senate, then it is only logical that the Commonwealth Campus students be given their own representation in the Senate.

We present these grievances, and statements of our need for our own representation in the Senate, for what we truly believe are in the best interests of our University.

Adopted April 14, 1973