



# THE Lion's Eye



Vol. 1 Num. 2

Delaware Co. Campus P.S.U.

Feb. 1968

## OSGA to cooperate with Undergraduate Government

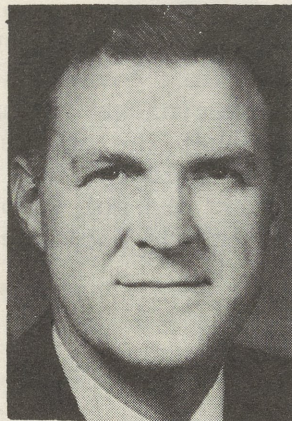
UNIVERSITY PARK (APS)--Student Government Association presidents and vice presidents from 19 branch Commonwealth campuses attended the Winter Term Conference of the Organization of Student Government Associations (OSGA) last weekend at University Park. Following adjournment of the Saturday session, OSGA president Robert Bauer said, "This has probably been the most successful conference OSGA has held in recent years."

Jeff Long, president of the Undergraduate Student Government (USG), addressed the general meeting Friday. During his speech Long repeatedly emphasized that both the USG and OSGA had common problems. He suggested that cooperation between the two groups would aid in solving major issues such as Senate representation, the University tuition hike and the recently instituted pass-fail grading system.

"Students are for the first time discussing policy and rules which affect student life," Long said. "We are all here for the same purpose, to benefit the student."

Two major pieces of legislation were approved during the Friday session. First under consideration was a bill passed by USG last term, which delegated to OSGA the authority to elect the commonwealth campus representative to the Faculty Senate Committee on Student Affairs. cont. P. 3

## SHAFER'S \$100 HIKE BRINGS protest at PSU



Gov. Shafer

### GCM Moves Chester

The Greater Chester Movement (G.C.M.), located at 28 E. 8th Street in downtown Chester is the official Community action agency for Delaware County. G.C.M., is a private, non-profit corporation and provides programs in health, education, job training, legal services, community organization and economic development for the citizens of Delaware County.

The movement is currently funded by the Office for Economic Opportunity, the Dept. of Health, Education and Welfare, the Labor Department and the Commonwealth of Pennsylvania. G.C.M., operates the anti-poverty programs in Delaware County.

The Greater Chester Movement  
Cont. P. 3

Governor Raymond P. Shafer submitted his 1968 budget proposals to the Pennsylvania General Assembly several weeks ago. It contained a proposal for a \$100 hike in the tuition rates for students at State-related universities, among them Penn State, Pitt and Temple Univ. The budget must still be approved by the legislature and would become effective on July 1st.

The governor contends that such a hike is necessary to meet the demands of enrolling more students and new programs of education. Whether the hike will pass depends to a large extent on the effect of pressure now being brought on the legislature by students and parents who wish to see increased expenditures met by increased taxes rather than increased tuitions.

Undergraduate Student Government President Jeff Long and Daily Collegian Editor, Richard Wiesenhutter sent a telegram protesting the hike to Governor Shafer, the majority and minority leaders of the State House of Representatives, and the chairman of the House Appropriations and Budget Committees. They also plan letters of protest to every legislator.

Long and Wiesenhutter have promised to "keep in touch with any organized student effort necessary to voice our opinion!" A recent tuition increase suggested by Governor Ronald Reagan, of California, was shelved after militant student protests against having the burden of education fall more heavily on the student's shoulders.