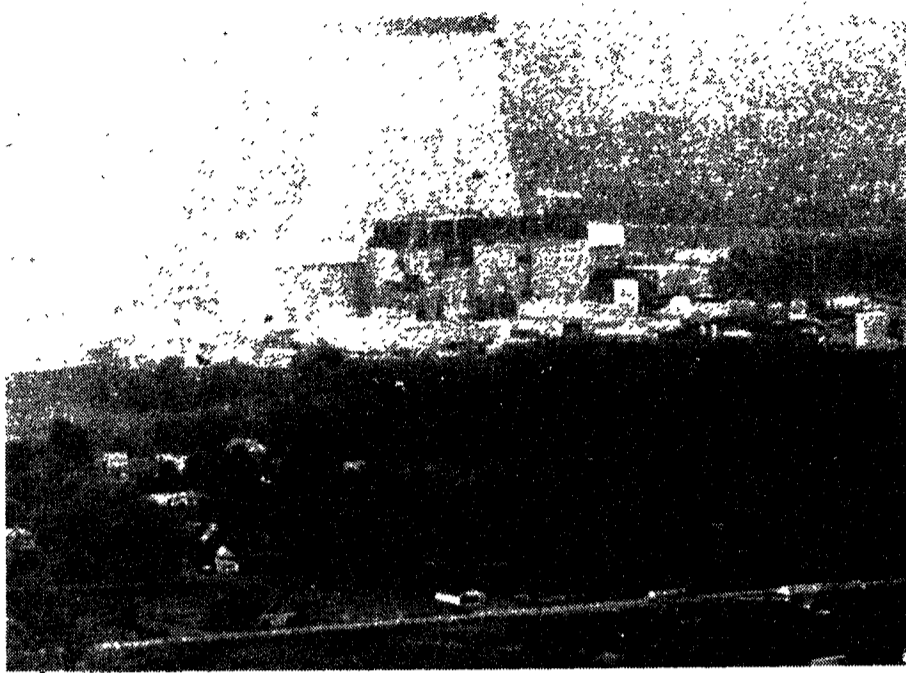


## Evaluation by Police Services Committee Completed



A view of the new Susquehanna Nuclear Plant as seen from the Council Cup Overlook shows the great size of one of the two cooling towers to be built at the site near Berwick. The plant is expected to be in operation by 1980. (Photo by David Kraft)

### Nuclear Power: Closer To Home Than You Think

At the center of today's Energy controversy is nuclear energy. Nuclear energy is the power produced by fissioning, or splitting atoms of elements such as uranium.

Those who oppose nuclear energy claim the risks of using nuclear energy are too great. The process of fissioning produces radioactive wastes which take many centuries to de-contaminate. A major problem is where to place these wastes so that no one or anything will be harmed by the radioactivity. There is also a risk of a "power plant accident" which means something would go wrong in the process and radioactivity would escape.

Advocates of nuclear energy claim that these risks have been minimized due to advanced research into the best designs for the safest plants. They claim the benefits outweigh the risks. Nuclear energy is easy to produce because the United States has an ample supply of the basic elements needed. Therefore, the cost to consumers would be approximately what gas and oil cost before the energy shortages sent prices soaring.

THE COLLEGIAN is investigating the nuclear energy question. Using the Susquehanna Nuclear Energy Plant, which is located approximately twenty minutes from campus, near the Council Cup overlook, as a major source of information we will present the advocates' view of nuclear energy in the December issue and the oppositions' view in January.

Nuclear energy is closer to home than you think.

During the 1976-77 school year the Student Government Association, in an attempt to evaluate the Police Services of the Hazleton Campus, formed the Police Services Committee. The need to evaluate the Police Services was brought to the attention of S.G.A. by several student inquiries into the adequacy of the protection received at the Hazleton Campus.

The Committee chose, as their evaluation procedure, to send an evaluation questionnaire to the directors of security forces at all Commonwealth Campuses. The questionnaires asked the directors several questions pertaining to their security operations. The content of the questions dealt with things such as the size of the campus, the duties and powers of the student personnel, type of training available to personnel, etc.

Some of the general information that relates to the security of the Hazleton Campus is: the Campus consists of 97 acres, with 13 major buildings and one residence hall housing approximately 210 persons. Over 900 students attend classes during the day and approximately 300 attend night classes. The Police Services Department of the Hazleton Campus is headed by Mr. Paul Cerula, who is also the Business Manager of the campus. Three full-time officers are employed in the Department and a number of part-time student employees. Their official duties are: to protect the life and property of all who are associated with The Pennsylvania State University, to serve as a communications service on campus, and to assist in any investigation of outside police agencies as they relate to the campus. The department also directs and manages traffic and occasionally does odd jobs

when called upon by campus personnel. One of the officers has completed a twelve-week police course and another has safety training.

The results of the questionnaires were compiled into a chart and compared with the Police Services of Highacres. The Committee reached this conclusion, based on the comparison:

"We have come to the conclusion that security on our campus is adequate, but not ideal, and there is much room for improvement. In comparison to other Commonwealth Campuses, our security protection is about average."

The quality of Police Services personnel was found unquestionably adequate. The Committee felt that they do as well a job as can be expected.

Some deficiencies were discovered. There is a lack of twenty-four hour coverage. Only sixteen hour coverage is maintained on most days, with no security protection after midnight. The portable radio equipment issued to security forces is in poor condition and has no direct link to outside police, fire, or other emergency departments. Uniforms are in poor condition and they are in short supply.

It was realized by the committee that many of the improvements are unattainable at the present time because of the financial difficulties the University is experiencing.

Some improvements are already being made. A new radio has been installed in the Business Office and is in the process of being connected to the portable units. Uniforms have been ordered but have not, as of printing date, arrived yet.

The evaluation was not meant to demean the campus' Police Services but merely to find areas where improvement is needed.

# DO YOUR THING

## A Page to Take Out Final Frustrations On