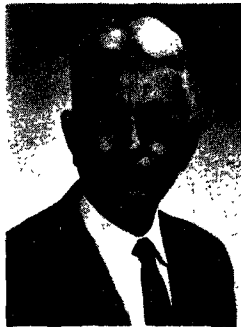
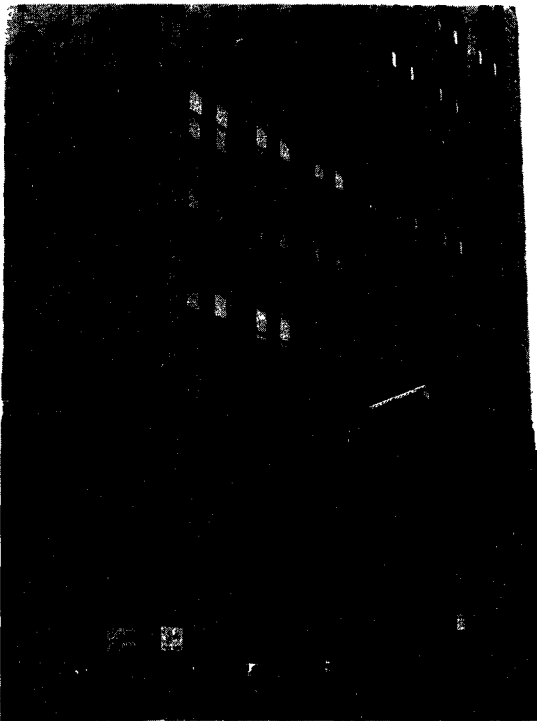


Hazleton Campus



ROBERT EICHE
First Head

1st SITE: FORMER
MARKLE BANK
BUILDING

THE HISTORY OF HIGHACRES

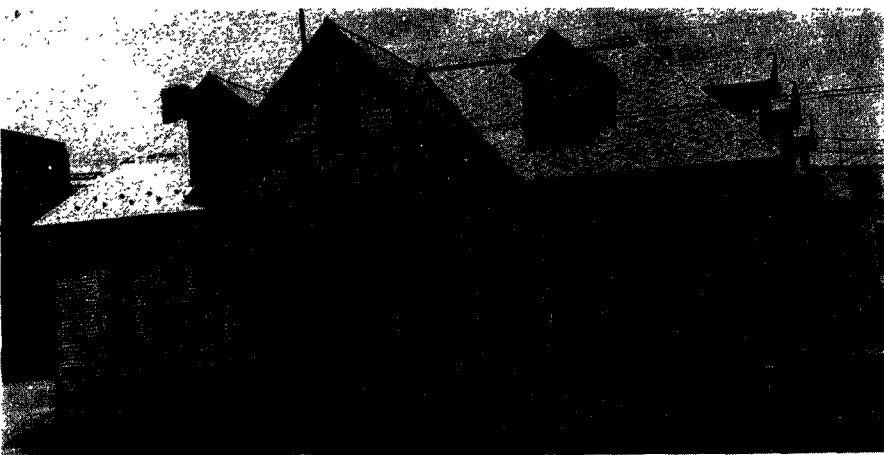
The Pennsylvania State University has enjoyed a rich history from the time it was chartered by the Pennsylvania Legislature in 1855 as The Farmer's High School until it achieved the status which it holds today as one of the nation's leading universities.

One element contributing to the richness and texture of this history was the progressive step taken in the year 1934, when Penn State extended its courses to the young people of the Hazleton area by establishing the Hazleton Center of the Pennsylvania State University and thus beginning its commonwealth campus services which now extend to fourteen such corners.

Being part of this deep tradition, the history of the Hazleton Campus is already very rich.

In 1932-33 a group of far sighted men saw the need for a college to serve the residents of Hazleton and nearby communities. Officials of The Pennsylvania State College petitioned, and after a careful study of conditions and available facilities here, the

continued next page



2nd SITE: FORMER WEST BROAD STREET SCHOOL (Recently Razed)