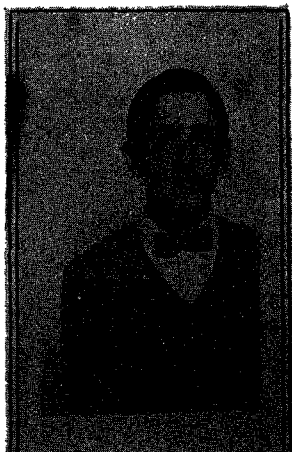




1

## PHACULTY PHOTOS

How well do you know your  
profs and administration  
people? Well, here's a novel  
way of finding out. Study  
these pictures and try to  
guess who the individuals are.  
Submit your answers in the  
same manner as the "It's On  
Campus" Quiz. Make as many  
guesses as you wish, one at a  
time please. All photos are  
of Hazleton Campus faculty or  
administration members. The  
prize to the winner? Once  
again, a PIZZA HUT pizza!



2

3



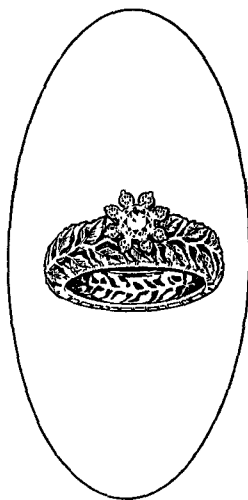
# WHCB

The Broadcasting Club  
hels a re-organization meeting  
for WHCB, the campus radio  
station, on Oct. 3, 1974.  
Officers were elected as fol-  
lows: Tom England, Station  
Manager; Frank Pully, Program  
Director; Dennis Williams,  
Chief Engineer; Mark Butler,  
Business Manager; Sharon  
Slingerland, Secretary. Mr.  
Caliva is the Faculty Advisor.

Meetings will be held  
every Thursday at Common Hour,  
S.U.B. downstairs. WHCB is  
expected to be on the air next  
week. Watch for notices.

*Orange Blossom*

*Symbol of a Dream*



*Holly.*

An engagement ring  
with a Continental heritage:

Light bursting  
from a band of lace ...  
eight diamonds clustered  
in starlight ...  
and each leaf  
in the band individually  
handpolished.

*Holly.*

As unique as it is beautiful.  
Just in time for happiness.  
Just in time for love.

*Fellin's*

14 E. BROAD ST.

HAZLETON PA.