

The Highacres Collegian

VOL. II

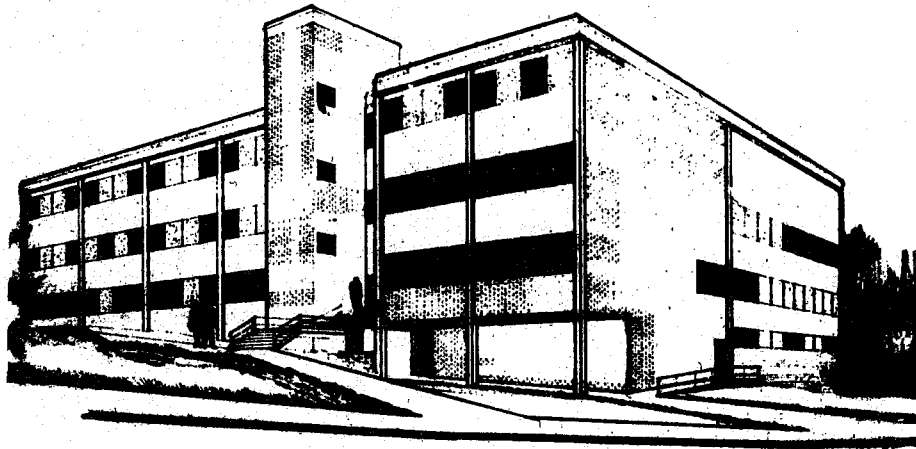
Hazleton, Pennsylvania



Friday, February 16, 1968

No. 2

HIGHACRES 1970?



CLASSROOM-LABORATORY BUILDING to be constructed at the Hazleton Campus of the Pennsylvania State University is depicted in the sketch above. Construction is expected to begin in the late Spring on this new building.

Spring Construction Date

Students, teachers, rejoice! The days of crowded basement classrooms will soon be only memories to Highacres students. Construction of the new classroom-laboratory building will begin in the Spring. Upon its completion, the building will afford the students a better opportunity for academic study.

A large lecture room accommodating 182 students will be the main feature of the ground floor. The first floor will contain six classrooms, computer and language labs, seminar rooms, and faculty and administrative offices.

Two electrical labs, two drafting

rooms, a physics lab, preparation rooms, and a classroom will occupy the second floor.

The third floor will have a biology lab, preparation and sterile rooms, an organic chemistry complex, a general chemistry lab, and independent study rooms.

The new building will increase the PSU investment in Highacres by over a million and a half dollars. This and the recent purchase of the adjoining Markle property will undoubtedly place our campus among the top ranks of the Commonwealth Campuses.

LIBRARY NEWS

'Cantata' 700 Background Music System, a 3M Product, is the latest addition to the library. This new concept in background music consists of a playing console and two speakers, located in the main reading room. For those who prefer, the reference room maintains a silent atmosphere. The system plays 700 selections of music (instrumental only) without title repetition. This innovation comes to the Library through the generosity of the classes of 1967 and 1968.

The addition of the 'School and Library Atlas' of the World' has been purchased and is located in the reference room. This eye-catching volume has its own stand and features many statistical tables and over-sized maps.

A new fifteen drawer section of the card catalog has been added to the main catalog.

Sorority NEWS

The Theta Sigma Pi sorority at Highacres has several events scheduled for Winter term. Among these are a ski trip to some nearby resort, a Mother-Daughter Tea, a fashion show with fashions supplied by the Village Tree, and plans for the May Ball. As soon as the Collegian finds out more about these events, we will relay that information to you.