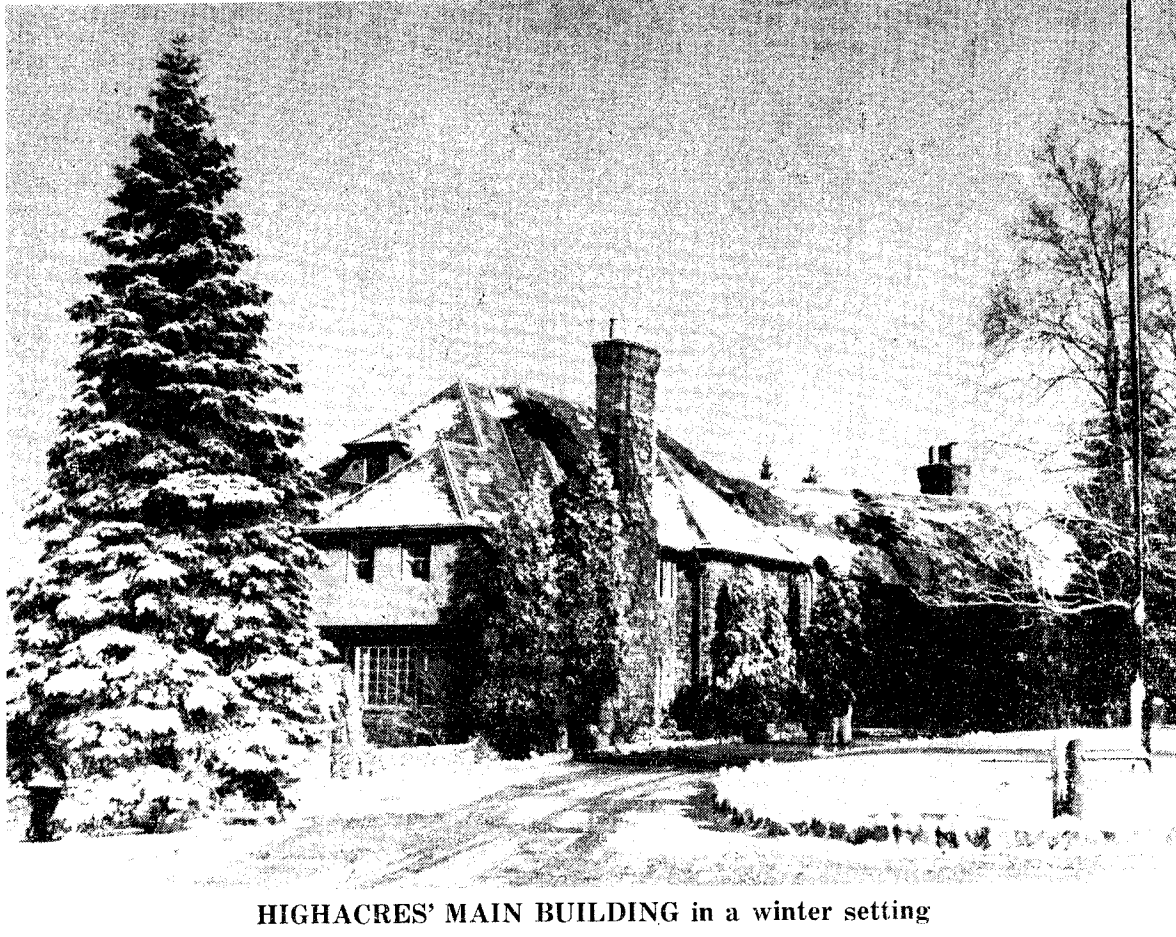




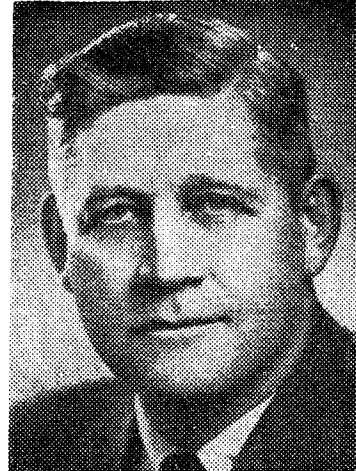
Hazleton Campus Looks To The Future



HIGHACRES' MAIN BUILDING in a winter setting

Kostos Reviews Future Growth, Needs, and Suggestions for Expansion

[Editor's note: In response to the question asked Mr. Frank Kostos, Director of the Hazleton Campus, by your editor, concerning Highacres' future growth, needs, and expansion, Mr. Kostos released the following statement for publication:]



MR. FRANK KOSTOS

During the past several years we have been faced with the staggering statistics predicting growth in our school populations. These figures not only call to our attention the growing trends in elementary and secondary school ages, but also an increase of students at the college levels.

The Pennsylvania State University is well aware of these problems which confront them and all other Colleges and is accordingly taking all possible steps to meet this situation. The addition of new dormitory space, new Engineering and Home Economics Buildings at the University Campus are evidence of the University's sincere effort to cope with some of the future needs.

The Commonwealth Campuses located throughout the State are an integral part of the University and without doubt will be called upon to ease some of the problems facing all Colleges and Universities as well as The Pennsylvania State University. Our local Campus now in its 26th year here in Hazleton has enjoyed a remarkable progress since its opening back in 1934. There is no need to review this brief history except to call attention that it was just about ten years ago that the Highacres Campus, formerly the Markle residence, had been converted to its present use. The enrollment in 1949 was approximately one-half our present student body. Since 1949 a number of physical plant changes had been made to meet not only the growing enrollment, but to allow for laboratory spaces needed for development of courses, such as the Associate Degree Program which had been introduced a few years ago. However, no appreciable addition of classroom space had been made since the move here to Highacres. Changes were made to develop the most efficient use of the limited classroom space. One of our most recent changes, the conversion of the first floor of the Main Building formerly a Student Lounge and Dining Room to Administrative office space, office for our Counseling Division and provision for a more efficient Library location, the relocation of our Dispensary from the former Student Building. These are examples of physical plant changes. These as we all know would not have been possible but for the construction of our new Student Union Building.

The University has made every effort to keep pace with growing needs during the past ten years. We are continually confronted with the need of a further development of our present facilities and the addition of others. We all realize that our classroom space and laboratories are limited; that improvements of these facilities are limited and that replacement of some of the facilities by erection of new buildings may be the only feasible solution in the future. Typical of this situation is our Library, which undoubtedly is limited in expansion possibilities, and because of these limitations, the only answer for the future may be the erection of a new Library Building. This is an example of the type of problem that is confronting the Hazleton Campus. Furthermore, the number of students that can be accommodated at our Campus is limited and the enrollment beyond such limits would necessarily bring about a need for additional classrooms and laboratories. Any such additions would have to be considered in new construction. On the basis of high school population studies, the Hazleton Campus can meet the needs of

(Continued on Page Four)

Highacres Expansion Calls For Closer Student Relations With Main Campus

The increase in enrollment expected in the near future at Highacres will be accompanied by an increase in the importance of orienting students to the Main Campus.

Some forward-looking steps have already been taken along these lines. For instance, magazines published on Campus such as *Froth and Penn State Engineer* are now being sold in the SUB and it is hoped that some copies of the "Daily Collegian" will soon be made available to Highacres' students. Closer relations between the student leaders of Highacres and those of Main Campus are being fostered by Mr. Thomas Kidd, student activities co-ordinator at Highacres.

To aid transfer to University as "Where's Nittany Hall? How do you get to Beaver Field? Where's the Chemistry Building?" Mr. Kidd will hold a series of informative meetings concerning the Main Campus. These informal group discussions scheduled for the week of January 6-13 will try to prepare those students who are transferring to Main Campus for college life on a larger scale than they now know it.

These discussions will be held in the meeting room of the SUB during the second and seventh periods of each day. All students planning to transfer for spring semester are invited to attend whenever they have free periods during the stated times. Among other things, such attendance will serve to orient the prospective transfer to social life at University Park.

Federal Loan Applications To Be Available In Spring

Students who are interested in student loans under the National Defense Education Act should keep in mind the following: Loan applications for the 1960-1961 academic year will not be processed until late next spring and during the summer. Therefore, it is suggested that Hazleton Campus students request applications from Mr. William Schneider after the mid-term of the spring 1960 semester.

How Active Is The Associate Degree Student In Highacres' Extracurricular Program?

By Sandie Pohlman

(Ed. note: The COLLEGIAN has conducted a general survey of the Hazleton Campus to find an answer to the question posed in the headline, that is "How active is the Associate Degree student in Highacres' extracurricular program?" and to find answers to these additional questions: How MANY Associate Degree students are actually in the memberships of the various student activities at Highacres? Do those Associate Degree students who are in activities ATTEND meetings regularly and SUPPORT the activities? If not, why not?

We have tried to be objective in our presentation of our findings and certainly hope that no one will be offended by our attempting to answer these questions. (Incidentally, by Associate Degree students we mean D.T., E.T., and the Medical Technician Curriculums.) We must realize that there are fewer Associate Degree students enrolled at Highacres, compared with the Baccalaureate students. Any study of statistics, therefore, must consider this.)

The following advisors gave these replies to Collegian reporter Sandie Pohlman concerning membership and participation in their respective activities:

Mr. Wilcox: "In the College Arts Society there are very few Associate Degree students in comparison to last year when they were in equal proportion to the Baccalaureate students."

Mr. Esher: "In athletics the number of Associate Degree students is just about equal to the number of Baccalaureate students. Their participation is good and

attendance is regular." Miss Garbrick: "In the College-Community Chorus there are very few Associate Degree students in comparison to last year. I believe the main reason for the decreased number to be lack of leadership in drawing these students into various activities."

Mr. Kafka: "In both the Belles Lettres and the Journalism clubs there are very few Associate Degree students and there always have been few."

Mr. Kidd: "In the newly organized ICG there are very few, if any, Associate Degree students so far. In the Photography club, however, they are somewhat better represented."

Mrs. Bodenstein: "Sixteen of the 41 members of the Sorority are in the Associate Degree group. Although these 16 girls represent a minority (about 1/3 of the total membership), on the whole they participate in sorority activities."

Why do some Associate Degree students participate in activities while others do not? Answers to this question were given by a representative sampling of opinions of the Associate Degree students themselves.

Sallie Beltrami (2-ET): "I am not in any activities at Highacres because I don't have any time. I also work nights. I do find time to attend dances, however."

Dominic Mariano (2-ET): "I am on an intramural basketball team and am captain of the bowling team. I attend regularly. Those Associate Degree students who do not participate in activities

(Continued on Page Four)

HAZLETON CAMPUS ALUMNI PLAN ACTIVE YEAR

The Hazleton Campus Alumni Association is comprised of all students who have graduated from Highacres, both those in the Associate Degree program and those who leave Highacres to continue their studies at the Main Campus or elsewhere. In brief, all students who have attended Highacres are eligible for membership.

The objectives of the Alumni Association are these:

1. To continue old friendships and cultivate new ones among members.
2. To supply members with news of fellow members through the Alumni Association Newsletters.
3. To work closely with the administration and faculty of the Hazleton Campus in order to offer suggestions concerning courses.
4. To assist the graduates with problems of placement.
5. To recommend the organization of night classes at Highacres according to the needs of the area graduates.

The Association conducts social as well as business affairs. For instance, last spring they sponsored a reunion banquet at which Dean Merle Campbell, Dean of Students of the Commonwealth Campuses, spoke. Officers of the Association are the following: President — William E. Kahler, class of 1956; 1st Vice President—Andrew Kavalec, class of 1959; 2nd Vice President—Joseph J. Lana, class of 1957; Secretary—Remo Molino, class of 1959; Treasurer — William R. Mace, class of 1959. The Faculty Committee members are Andrew Kafka (chairman), Frank Defina, and Frederick Esher.

Former Highacres students are enthusiastic about this organization. A number of them are working nearby — others are in remote parts of the United States. Whether near or far, for them Highacres persists in being memorable — their feelings reflect the

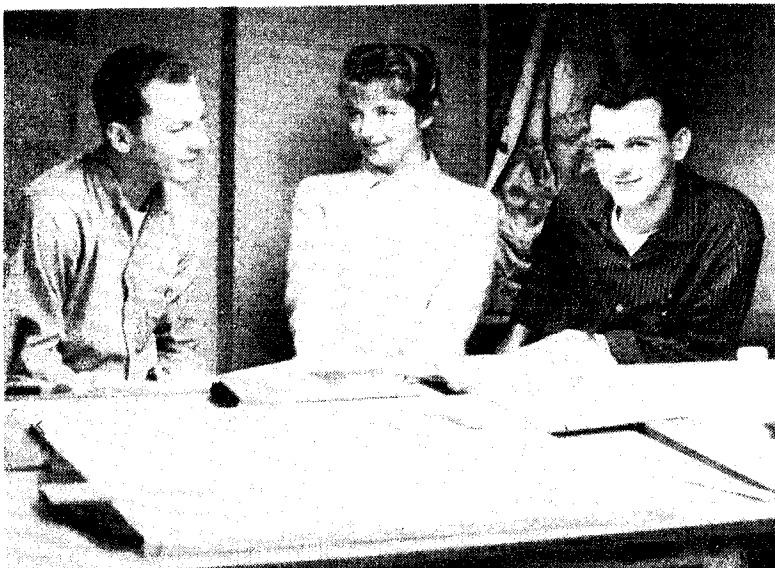
(Continued on Page Four)

34 STUDENTS TRANSFER TO CAMPUS IN FEBRUARY

Thirty-four Hazleton Campus students are transferring to the Main Campus for the 1960 Spring semester. They are:

J. Baradzic, R. Bartkowiak, J. Bartol, T. Brennan, T. Brill, C. Casper, E. Ceol, R. Cheeka, P. Cheplick, J. Chesonis, T. Clatch,

P. Cohen, V. Cortez, F. Dagostin, T. Drusa, L. Dubetsky, J. Dugallo, E. Ecker, W. Gillespie, A. Goshko, A. Jumpeter, S. Kozuch, J. Lindenmuth, L. Melatti, J. Melley, J. Moody, M. Ogorzalek, R. Redwinski, S. Sorce, J. Sorosky, F. Sullivan, R. Tirpak, R. Wagner, B. Washo.



Sandie Pohlman (middle) discussing the activities of two Associate Degree students, Fred Bernoski (left) and Robert Lawrence (right)