

BEST WISHES FOR A MERRY CHRISTMAS, HAPPY NEW YEAR, and
A BIGGER AND BETTER HIGHACRES CAMPUS



Highacres Greatest Need:
**A STUDENT UNION
 BUILDING**

Highacres Collegian



PENNSYLVANIA STATE UNIVERSITY

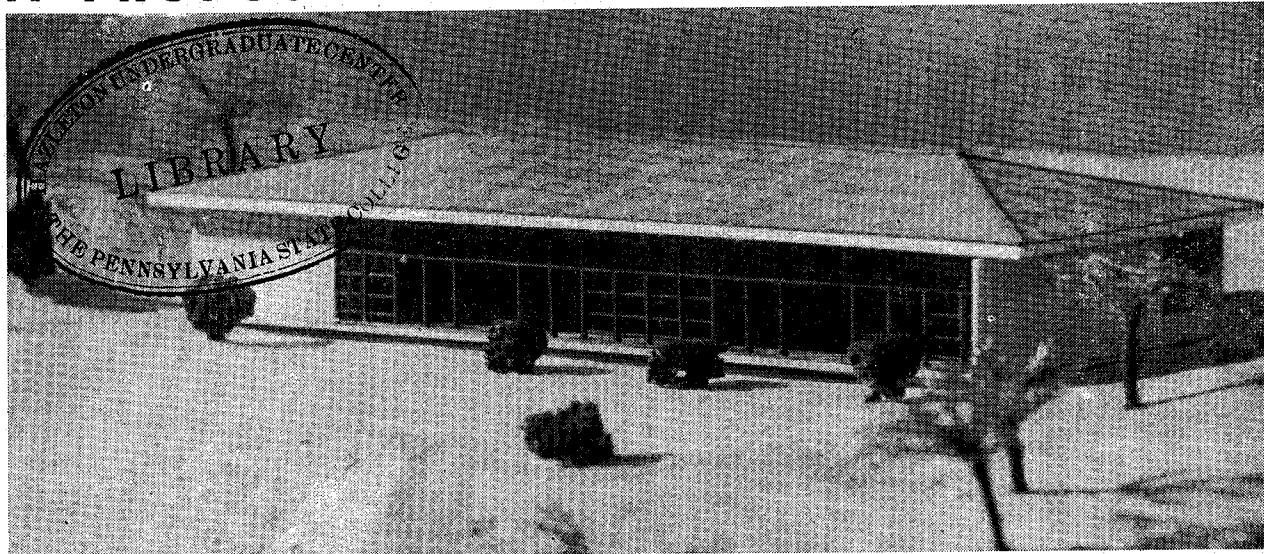
Highacres Greatest Asset:
**LOYAL, COOPERATIVE
 STUDENT SPIRIT**

Vol. X.—No. 8

HIGHACRES CAMPUS, HAZLETON, PA.

DECEMBER 20, 1956

A PROPOSED STUDENT UNION BUILDING



Professor George Nelson, of the Highacres Engineering Department, designed the model of the proposed Highacres Student Union Building which could be located in the upper section of the campus, across from what is now the faculty parking area. This proposed location provides a picturesque view of the beautiful Conyngham Valley. The building itself would be approximately forty by eighty feet, and of the modern split-level construction. The lower level would feature a lounge and spacious dining area, convertible into an auditorium. The upper level consists of the cloak room, dining hall and cafeteria service area, and rest rooms.

The stage area rooms are located in the north wing of the proposed building. Space would be provided for such diverse activities as ping-pong, chess, television, lounge, and study areas. A flagstoned terrace would provide the setting for outdoor dining or dancing. The entire building and grounds would combine the best characteristics of utility and gracious modern living. Indeed, it will be both a practical and aesthetic addition to our Highacres Campus. In addition, it would add usable space in the other buildings, for the cafeteria, "Rec" Hall, etc. would be moved into the new structure.

Now do YOU see what YOU are missing without a Student Union Building!

Reported by T. WATERS

New President Of The Pennsylvania State University



DR. ERIC A. WALKER

The students, faculty and staff of The Highacres Campus wish to extend our best wishes to Dr. Eric Walker, new President of The Pennsylvania State University

SO MUCH ACTIVITY IN SO LITTLE BUILDING SPACE

Reported by J. AVIGLIANO

While we are proud of the picturesqueness of our Highacres Campus, it is nevertheless inescapable that we should be thinking and talking about a Highacres problem which is becoming increasingly worse. There is no Student Union Building to house our many student activities which are a vital part of college life. Truly, **SO MUCH ACTIVITY in so little building space**, for Highacres has outgrown the plans originally made for it. It is bursting at the seams.

Let us examine some of the crowded student spots scattered on the campus at Highacres:

Step into the "lounge" in the Main Building. It is usually filled with students who are either visiting one another, or attempting to do some last-minute home work, thereby preventing the space from being used for its intended purpose—as a reception room and waiting room for people who need information and guidance from Mr. Kostos or Mr. Schneider. This space is being used, because we have inadequate student lounge or student study-hall space.

Come into our "Cafeteria" to eat your lunch, and no doubt you may find that there are no available seats or tables. You frequently have to go hunt for a vacant classroom. All this while you are pressed for time, as it is! This is further aggravated by lack of space for our briefcases and coats, for student lockers are almost non-existent.

Enter the miniature recreation "building," sometimes called "K Cottage." It is much too small to accommodate the large number of students who would like to use it at any one time. Observe the floor space: it is impossible to put anymore candy or soda vending machines in the "rec" building. The playing of games is sadly limited to a few tables of chess, checkers, or cards, etc. In addition, the important services of the Health Department take more space away.

Ask any member of the popular Highacres Sorority, Theta Sigma Pi, concerning a pet complaint. It is the lack of space for activities. The Sorority has no place to conduct leisurely meetings and its numerous affairs. Often, a home of one of the members is used. The Sorority must rent places, such as the Eagles' Ballroom and Genetti's Pennsylvania Rooms, in order to hold social gatherings, like dances. This is expensive. Take a look in at the College Community Chorus planning its affairs.

(CONTINUED ON PAGE TWO)

Highacres Is At Saturation Point

Reported by G. OPILLA

"A long-range plan is needed for the development of the Hazleton Highacres Campus." These words were spoken by the Administrative Head of the Highacres Campus, Mr. Frank Kostos, during a recent Collegian interview. "Although we have 99 students in the two-year terminal program," said Mr. Kostos, "we had to turn 20 others away because we had no room for them. Every bit of space in the Highacres buildings is being utilized, and more is seriously needed."

Highacres Campus has a total enrollment of 303, divided as follows: 198 full-time four-year program students; one part-time; three special part-time; 99 full time in the two-year terminal program, and two part-time. In the four-year program, almost all curricula offered on the campus are given at Highacres. In that program, thirty-one courses are offered this semester with a total of fifty-four sections. In the two-year terminal program, Drafting and Design Technology and Electrical Technology, seventeen courses with a total of twenty-four sections are being given.

That the Pennsylvania State University actively supports the local campus is shown by the fact that it put \$30,000 directly into

the 1956-57 budget of \$209,000. Actually, the college's contribution to the center is much greater than this, Mr. Kostos pointed out. Classes at the center are supervised directly by Deans and Department Heads coming here from the main campus, and these and other expenses do not show up in the local budget. "It is a mistake to think that the center can be operated on the fees paid by the students," Mr. Kostos declared.

Most of the students enrolled at Highacres are from the Hazleton region, but there are many from distant towns and cities. Among the more distant communities represented in the student body are Danville, Kingston, Nesquehoning, Allentown, East Stroudsburg, Harrisburg, and Nanticoke plus several others who attended high schools in Michigan, Maryland, and Oklahoma. Thus, it can be seen that the Highacres Campus is a very vital and important community institution.

The only way by which the Highacres Campus can continue to serve the needs of the community is by a continuous program of addition and expansion. The addition of a Student Union Building is one way by which this program can be carried out.