

Producer Combines Audio and Visual Staging "As Darkness Falls"

By VINCENT DANGOLOVICH
COPY EDITOR
VWD5006@PSU.EDU

Communications
Prof. Catherine Ann
McCormick invited
a horror anthology
production

to perform at PSH last Thursday.

As Darkness Falls, created by John C. Alsedek combines minimalist costuming, props and staging of a dramatic reading with the sound effects of an old time radio drama.

The two featured episodes of Thursday's performance included "An Ungentle Wager," in which a jaded soap opera star makes a dangerous bet with a young ingénue, and "Madeline's Veil," in which a jazz singer exacts a mysterious revenge on her gangster fiancé and murderer.

Writer/director John Alsedek, the son of Open Stage of Harrisburg founders Don & Anne Alsedek, used local talent in casting the Thursday night performance. Among them were professors Jennie Adams and Kelli Kauterman Eberlein of PSH, as well as Dave Olmsted of Hacc theaterworks.

Following the show, Alsedek complimented his cast following an outburst of "it was awesome" from an anonymous audience member.

"I live in LA," said Alsedek, "you'd be surprised how you find more good actors here. Out there, they are more interested in being stars."

As questions flowed from the crowd, Alsedek explained his roots and his reasons for the format of the production. After being raised in a theater family, he got a degree in Journalism which, as he states, proceeded not to use.

Instead, he used a childhood love of anthology shows like *Night Gallery* and *The Twilight Zone* to write his own. There are currently seven episodes of what he calls "a work in progress." The combined radio and stage drama presentation stemmed from a lack of funding to create a full stage or television production. Alsedek and actress Dana Hayes turn theaters and college campuses with the show.

Prof. McCormick became interested in bringing the show to PSH in October when the show was performed at the Gamut Theater of Harrisburg's Harrisburg Shakespeare Festival group. The combined styles were a reminder of the past crossing into the future of media.

"Convergence as a principal is definitely out there," said

McCormick.

Others were less enthused about *As Darkness Falls*.

"The actors were good, the rest was not," commented grad. student Mary Warner, 24.

She and fellow audience member, Matt Toth, 25, mentioned the presentation seemed muddled by a confusion of styles. Actors standing in front of speaking characters and unsynchronized sound and actions were, to them, distracting. The theater errors also highlighted the fact that the show was written for one form but forced into a "lazy hybrid."

Never the less, Alsedek's production received warm praise from Thursday's audience.

"Everyone has been so nice here," said actress Dana Hayes. "They can be some mean at other campuses."

Both Alsedek and Hayes were grateful for the opportunity to perform at PSH and for the aid of the Capital Players in providing sound and lighting for the event. When asked if he would return for another show, Alsedek, the former Harrisburg native answered quickly:

"Of course, it's home."

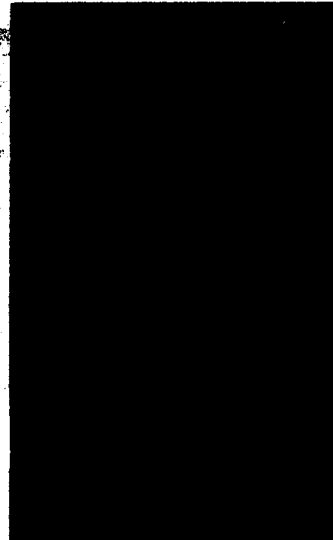


Photos by Chyna Geib/ The Capital Times

Above: The death scene
Below: Lori Meyers and Jennie Adams



Jay Miffoluf as Theo
Dimitrakos
and Lori Meyers as
Angelina
Andrews



Dana Hayes as Madeline Charles



Dave Olmsted as Vincent Basso, Kelli Kauterman Eberlein as Dolores and Dana Hayes

The Captimes wanted to know what you're doing on spring break. Here's what a few students said:

man on the street

Cody Page



Photos by Chyna Geib/ The Capital Times

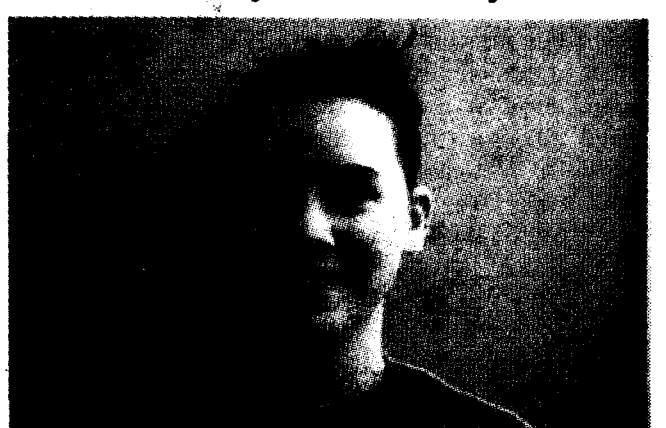
"I will be staying a Middletown over spring break. I will probably we having rehearsal everyday for the spring show "The Wild Party".

Amy Kirby



"Take it easy. Catch up on sleep. It's kind of all up in the air right now".

Jordyn McCrady



"I'll be staying here, doing rehearsal, and probably working every day".