

# campus life

## Plans approved for Harrisburg residence hall

Hershey, Pa. — Penn State's Board of Trustees today (March 20) approved the final design and authorized the awarding of contracts for the construction of a new residence hall at Penn State Harrisburg.

The four-story, 100-bed apartment-style project to serve first-year students was designed by the architectural firm of SMP Architects of Philadelphia and construction is expected to be completed in time for the fall 2010 semester. The new building will bring the number of students housed on campus to 430.

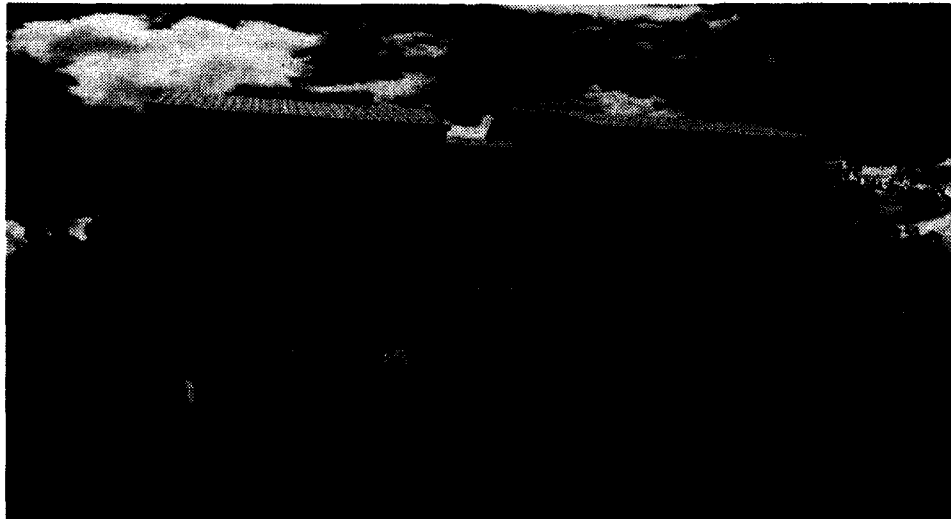
With the continued growth in enrollments at Penn State Harrisburg, the need to increase housing capacity has prompted the project. The waiting list for housing continues to grow each year as the campus and University Housing and Food Services work to implement a plan for replacing

beds previously available to students on campus when Meade Heights and Church and Wrisberg Halls were in operation.

"With our increasing enrollment

and look forward to the completion of the construction phase."

In keeping with the University's commitment to environmental sustainability, the \$10 million,



and demand for on-campus housing, the new residence hall will fill a critical void and will serve us well in meeting the needs of our first-year student population," said Penn State Harrisburg Chancellor Madlyn L. Hanes. "We are grateful the trustees have approved the plan

30,000-square-foot project is planned to be LEED (Leadership in Energy and Environmental Design) certified and considers energy efficiency, including a ground-coupled geothermal system, which will heat and cool the building. "The design is conceived as a living and learning

opportunity for students to understand the daily impact they have on our environment," said Edward Dankanich, director of Business Services. "Faculty are already engaged in developing educational opportunities including storm water management, landscaping, soil conservation and energy-saving mechanical systems."

"The floor plan for the second, third, and fourth floors are identical," said Donald Holtzman, senior director of Student Services. "The design is not simply a dormitory. The primary guiding principle of the new housing is the grouping of student rooms around community spaces that will encourage student interaction."

Each group of student rooms includes four double suites with shared bathrooms for a total of 16 students and four bathrooms per pod. Each floor consists of two groupings with a study area and lounge in the center. There also is a resident assistant apartment on each floor.

The new residence hall, the

adjacent Student Community Center and existing apartments will frame a new exterior quad, which will include new walkways connecting all buildings. The facility's look will mirror the previous housing. The entire complex is conveniently located close to the library, academic core of campus, and recreation facilities.

The first floor main entrance will lead to a reception desk and sitting area. Also included on that level are a housing office, two-bedroom staff apartment, mechanical rooms, laundry and building storage. The facility also is serviced by an elevator.

The advent of all-new student apartment-style housing at Penn State Harrisburg began in August 2002 with the opening of accommodations for 300 students. That was followed in 2005 with additional similar housing for 32 first-year students.

Story and Photo courtesy of Penn State Live ([www.live.psu.edu](http://www.live.psu.edu))

## Faculty member earns Northeastern teaching award

The Northeastern Association of Graduate Schools (NAGS) is honoring Penn State Harrisburg faculty member Peter Kareithi for what his students and colleagues in the School of Humanities have known all along — he is a remarkable teacher.

An associate professor of humanities and communications, Kareithi has just been named winner of the prestigious 2009 NAGS Master's Teaching Award, presented to a faculty member in the Northeast in recognition of excellence and creativity in the teaching of graduate students at the master's level. The award will be formally presented April 3 during the organization's annual meeting at the University of Delaware.

NAGS is one of four regional affiliates of the National Council of Graduate Schools with a membership of 101 U.S. and 21 Canadian institutions of higher

education from 10 states, the District of Columbia, and six provinces. Members include Harvard, Yale, Dartmouth, Penn, Cornell, Syracuse, Boston College, Temple, Georgetown, Rochester Institute of Technology, Maryland, and Penn State.

"Overwhelmed" at the news of the award, Kareithi says, "I am happy my style of teaching is acknowledged. It's what I call a personally engaged student-centered approach in which I try to get to know students not just in the classroom, but in their lives outside of class. That way I get to learn where their academics and personal lives intersect. We need to break down power barriers between teacher and student and although it can be risky, it is also powerfully productive."

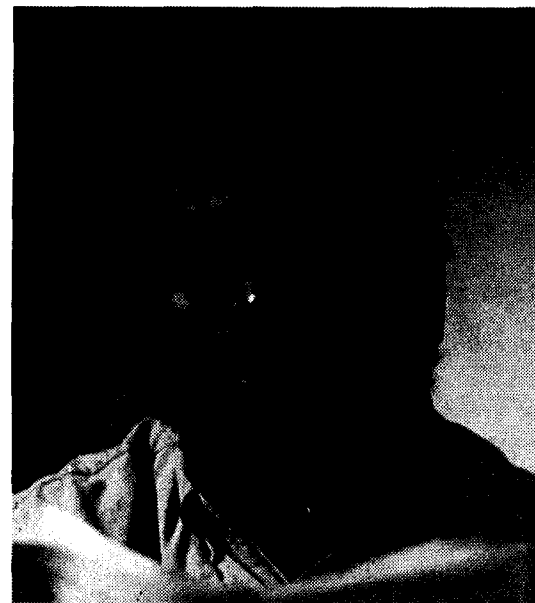
Kareithi adds that his winning this award is the result of the type of environment for teaching and

learning fostered at Penn State Harrisburg. "The environment truly allows faculty and students to examine issues from multiple perspectives. It's an environment which encourages faculty to view seriously different ways of teaching and learning, and even take risks. And due to the interdisciplinary nature of our college's curriculum, faculty and students from across disciplines can learn from each other. Another help has been the indispensable mentoring from my highly capable and experienced senior faculty colleagues since my arrival on campus in 2001.

Associate Dean for Research and Graduate Studies Marian Walters, commenting on the honor, says, "Having faculty from Penn State Harrisburg receive significant national awards is a strong reflection of the high quality of our faculty and their achievements.

We at Penn State Harrisburg have always known that quality, but recognition from outside the University is an important demonstration that their achievements and abilities are also recognized by the larger community within their academic fields.

Students are quick to point out Kareithi's contributions in the classroom. Typical comments about his courses include "important," "relevant," "exciting," and "challenging." Bringing a unique blend of in-depth cultural knowledge, theoretical sophistication, and



total commitment to teaching, Kareithi's "teaching style inspires

Please see **KAREITHI** on page 12