

Library gets a new image A fresh look on an old place

Continued from Page 1
 the book collection where the Special Collections, curricular materials lab and Art Slide library are located. One of the special collections, The Alice Marshall Women's History Collection, offers more than 11,000

Best Sellers, which was started by Crawford and other staff members. The structure of the three-story library contains 122 windows that allow maximum utilization of natural light. In addition to the natural lighting, all rooms and open

Crawford said it's hard to tell if the library is used enough because of the electronic resources that can be accessed from anywhere, but it has proven to be an integral part of education at PSU Harrisburg. "The computers and classrooms are used heavily," said Crawford. He is quite proud of the high quality of the library's collection. Since the campus doesn't have a lot of majors, it's easier for the library to have a focused collection that pertains to these specific courses.

"I'd have to say I'm most proud of the library staff," said Crawford, whose administrative assistant, Jennifer Dimeler, received the Penn State Harrisburg Staff Service Award in 2003.

Continued from Page 1
 Schiavoni. Most items are made fresh daily by staff.

Food services offer two meal plans for students. LionCash is an online, prepaid spending account accessible through Penn State id-cards. By depositing money into accounts, students never need to carry cash. Students can make purchases using their id-cards at Stacks, Biscotti's and the bookstore. Deposits to a LionCash account can be made online, with cash or

beverage items.

Students who purchase an A La Board meal plan will have to pay two plan costs. The base cost, a food court operating fee and a point cost, which are the funds made available after a meal plan purchase. The A La Board meal plan provides food purchasing for students who eat twelve or more meals per week on campus. "You put money up front and actually get 65 percent off, but you have to put more money up front," said

dormitories have full kitchens.

Stacks and Biscotti's currently employ 7 full-time workers, 4 cashiers and 20 to 25 student workers. Student workers are allowed to work up to 20 hours a week. Stacks and Biscotti's do 80 percent of their business around lunchtime and the busiest time is from about 12 p.m. to 1:30 p.m., said Schiavoni. He said Stacks and Biscotti's are more than just dining areas; they are good study areas and offer a time to relax in such a high-pressure



Stacks Market has been a staple at PSH for a few years, replacing the basement cafeteria

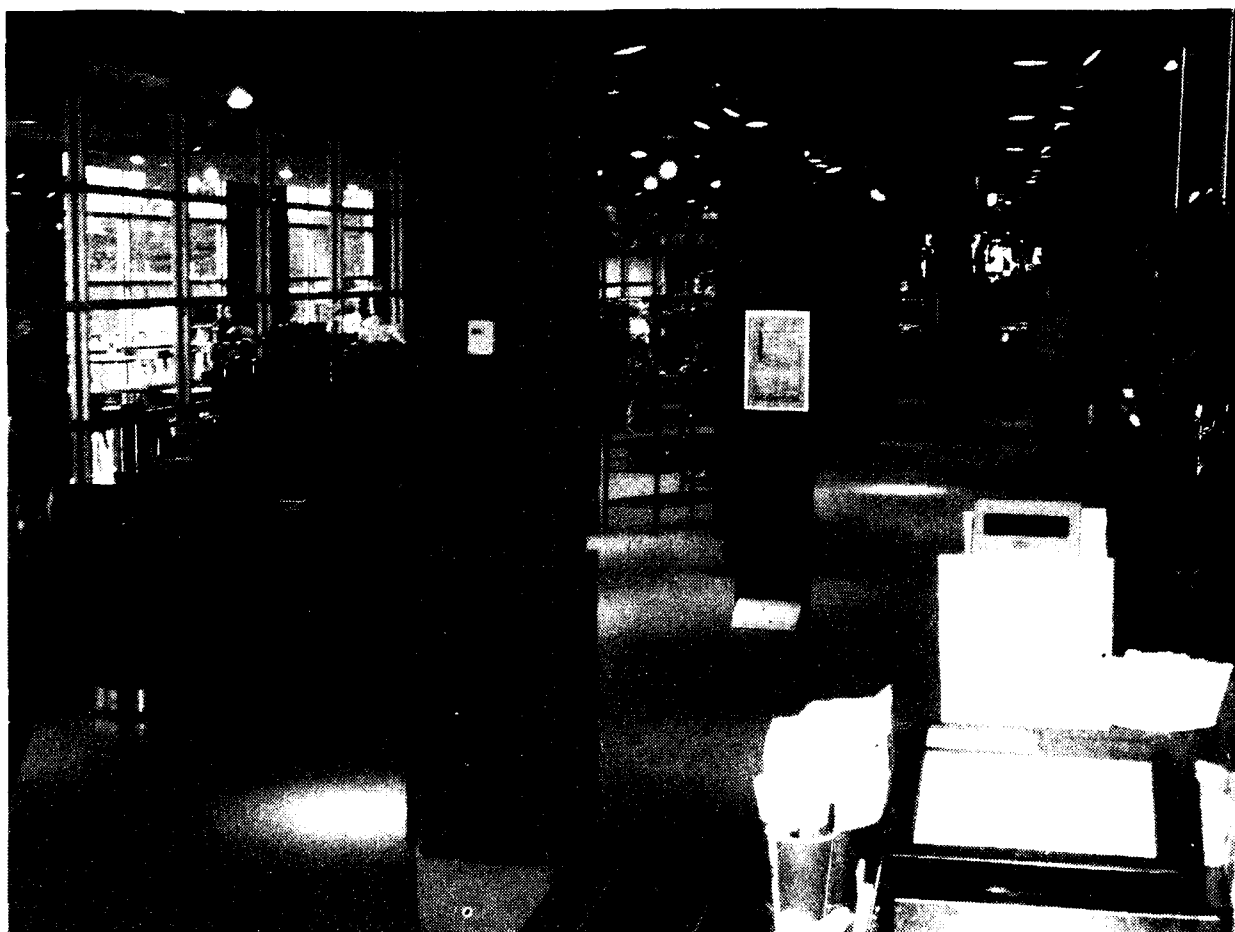


Photo by MATTHEW SARVER Capital Times

books, posters, campaign buttons, sheet music, correspondence and other items focusing on the stereotyping of women.

In addition to the women's history collection, the library also offers the Holocaust and Genocide Collection. This collection consists of classic and scholarly works by leading historians in the field, as well as personal accounts. Students have access to general histories, reference sources, documents, juvenile books, curriculum materials and conference proceedings, in all formats: monographs, encyclopedias, video recordings, DVDs, compact discs and microforms.

Crawford said the library's strongest collections are the Alice Marshall and the Holocaust collections. "The Holocaust studies was the result of a gift and an endowment," said Crawford. "Every year, there is more added to it as a result of the endowment and it really helps." He's also fond of the New York Times

locations are zone temperature controlled to meet individual needs. The library's Spacesaver shelves allow growth of print collections for



over 26 years, so books will never need to be stacked on windowsills as they were before.

Crawford, whose administrative assistant, Jennifer Dimeler, received the Penn State Harrisburg Staff Service Award in 2003.

"Come in and meet the staff, use the collections, and study," said Crawford.

check at the Housing and Food Services office, or with cash at the food service registers. There is no fee to use a LionCash account and only a initial deposit is needed to activate the card. Those who use their id-cards receive a 10 percent discount off of most food and

Schiavoni. Students can charge the cost of the A La Board meal plan to their semester bill for convenience purposes or for financial aid purposes. Penn State Harrisburg is one of the few campuses that does not require students to purchase a meal plan because most of the

environment. "We have added to the school environment and the learning experience," said Coleman. Stacks Market is open from Monday through Thursday, 8:30 a.m. to 8 p.m. and Friday, 8:30 a.m. to 4 p.m. Biscotti's is open Monday through Thursday, 7:30 a.m. to 8:45 p.m. and Friday, 7:30 a.m. to 12 p.m.

AS A COLLEGE GRAD, YOU MAY BE ELIGIBLE FOR



ANY NEW TOYOTA OF YOUR CHOICE*



2007 FJ CRUISER†

2007 RAV4



2007 CAMRY HYBRID

2007 YARIS



WWW.WINAYARISONLINE.COM†

TOYOTA | moving forward ▶

TOYOTA

buyatoyota.com

NOT ALL CUSTOMERS WILL QUALIFY. CUSTOMERS RECEIVE \$400 FROM TOYOTA TOWARDS LEASING OR FINANCING THE PURCHASE OF NEW UNTITLED TOYOTA MODELS THROUGH PARTICIPATING TOYOTA DEALERS AND TOYOTA FINANCIAL SERVICES. SEE DEALER OR VISIT WWW.TOYOTAFINANCIAL.COM/FINANCE FOR DETAILS. COLLEGE GRADUATE PROGRAM IS SUBJECT TO CHANGE OR TERMINATION AT ANY TIME. NO PURCHASE IS NECESSARY. MAKING A PURCHASE DOES NOT INCREASE YOUR CHANCES OF WINNING. VOID WHERE PROHIBITED BY LAW. 16 ENTER YOU MUST BE A LEGAL U.S. RESIDENT AT LEAST 18 YEARS OLD AND YOU MUST HAVE A VALID DRIVER'S LICENSE. VISIT YOUR PARTICIPATING TOYOTA DEALER OR WINAYARISONLINE.COM FOR COMPLETE ELIGIBILITY REQUIREMENTS AND SWEEPSTAKES RULES.