

# Group Doshi art in the Morrison Gallery

By **KAREN PLOTT**

Staff Writer

Group Doshi, now located in the Morrison Gallery, is a collaboration of contemporary (mostly abstract) works from various artists from the Susquehanna Art Museum. The title of the show is "Journey Within," which was based on a theme by Doshi founder, Maya Schock. Doshi is the Japanese word for "fellowship."

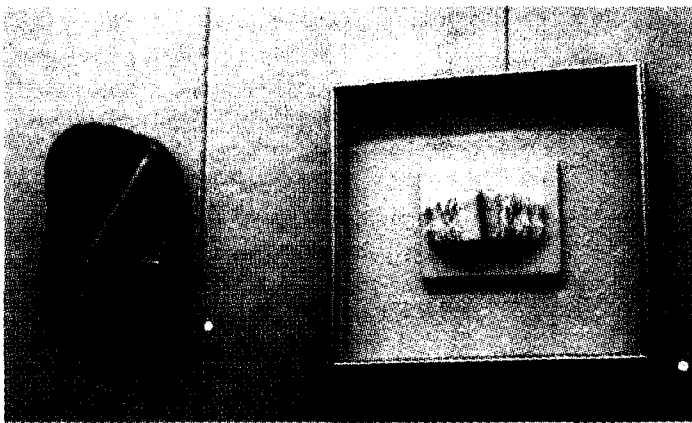
The artwork in the exhibit provokes the study of the inner self in many mediums including stoneware, construction, oil, acrylic, sand, ink, photography, watercolor, tea paper, charcoal and pastels. Just as there are many mediums, the artists succeed in expressing themselves in elucidating what it means to search inside oneself to discover the true identity in numerous different ways.

"Arabian Nights" by Louis Rice combines the elements of fantasy, adventure, romance, fire and magic. Hidden deep inside a world of blatant dull reality everyone has an inner life filled with these elements and has the potential to imagine the impossible. However, this exciting inner life is doomed to be drowned out by reality.

"Just like any other way of life, a precious few find good in anything. The trick

is not to see through rose colored glasses but to accurately reveal what is the nature of the beauty inside," said Rice.

The human is a complex species. "Arabian Nights" evokes this complexity by adequately displaying the contradictory, fascinating and



Above: "Emergence," by Beverlee Lehr

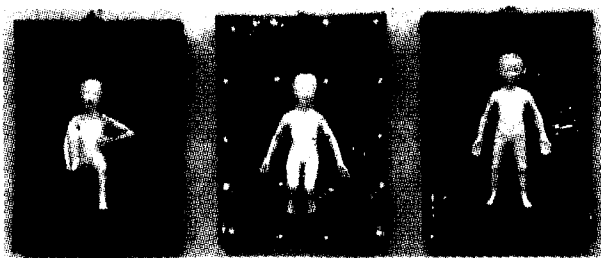
unpredictable nature of the human mind always searching for adventure but never achieving. This is why humans are enthralled with aesthetic stories of another time and place, hence the title "Arabian Nights."

Through the random strokes of reds, purples, blues, greens and yellows there is also structure. It is ingeniously logical, because it is psychologically balanced.

Another work, "Untold Story" by Natalie Locke is simply an empty book made out of tea paper and embossed paper. One might ask, how does an empty book relate to self discovery?

This work is analogous to the childhood classic, "The Never Ending Story" by Michael Ende. Fantastica is the mystical world that symbolizes every human's dream or fantasy where the leader of the world (the only human) writes history as he went along.

"Untold Story" is a book of life that cannot be written in stone, because it is always changing and unpredictable just like in the novel, every individual makes up their own destiny.



Above: "Amy's Transformation," the provocative piece by Beverlee Lehr

hand built stoneware pieces in which there is a figure. The first figure is in horrific pain as she lays on spikes with needles pinned in her. The second figure is peaceful with a quilt-like background, and the third depicts what seems to be a godly awakening.

As with most abstract art there are various ways of interpreting what this piece means. Maybe the three figures depicts the transformation from being pained by being lost to oneself to the glorious feeling of finding oneself almost like the transformation of the caterpillar to the beautiful butterfly.

"Emergence," another work by Beverlee Lehr, is also hand built stoneware. This piece incorporates fire and the petal of a flower symbolizing the vitality of life. The color is orange like the freshness of a new day with a pale blue line down the middle to signify unity.

"...explore creativity into the unknown. The explanation of art is a never ending process," said Locke.

Beverlee Lehr's piece, "Amy's Transformation," is one of the most arresting pieces in the show for its provocative nature. It is a series of three



Photos by Jennifer Kaufman

Above: "Arabian Nights," by Louis Rice. Note the vibrant use of color.

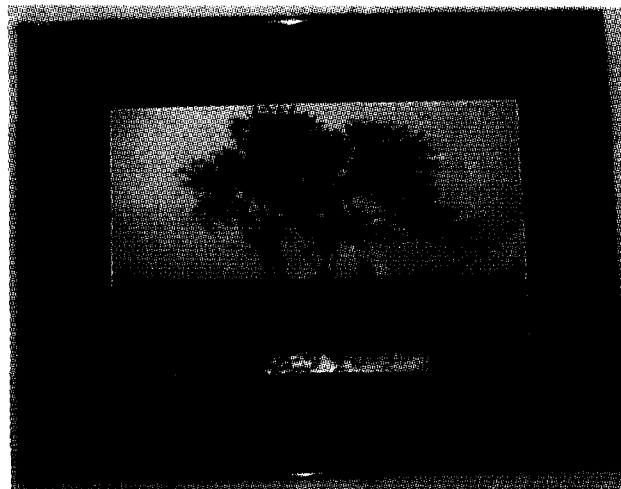
"Visual memories of landscapes, plants and human anatomy journey through my soul and inform by imagery," said Lehr.

"Enlightenment," a color photograph by Laura Zito, consists of a woman contemplating while looking over a grayish landscape with a single red glare of light illuminating her. The woman is obviously looking within herself and obtaining fulfilling answers to light up the meaning of her life.

"Autumn Rain" by Fleur Byers would be a favorite to impressionism lovers. This piece involves getting in touch with nature, which is a theme in many of the pieces in this exhibit. It is also about the play of light, which is analogous to Monet's work. The viewer can almost taste the rain and the cool air autumn brings, and feel the witness as adequately illustrated by the reflections of light in the water on the sidewalk.

The only part of the figure shown in the composition is the legs, which allows the viewer to imagine himself or herself as the person experiencing the contemplative lonely walk in the rain.

Byers, known as the painter of sunlight, rain, snow, wind and shadows said, "I like to focus on the changing moods of nature and the fleeting effects of light and the effects of men and women and their surroundings and how they change in the surroundings in which they live."



Above: "Enlightenment," the impressionistic photograph by Laura Zito