

Family housing situation improves

Continued from Page 1

only has two-bedroom units, Holtzman said he has contacted every realtor in Middletown attempting to find a house or apartment to satisfy other family's space requirements. In addition, he is negotiating with Pineford Village to waive their security deposit for PSH family tenants.

Seong Ju Kang, graduate assistant in the PSH school of public affairs and a doctoral candidate in public administration, said he looked at Aldwyn Courts as a possible place to move his family. Although the apartment is "less spacious than Meade Heights," Kang said, "it looks good."

Besides being next door to PSH, the financial arrangements Aldwyn Courts will extend to PSH students means the rent will be comparable to Meade Heights. Kang said a faculty member advised him of another housing option near Hershey Medical Center, but the higher rent and the commute to PSH makes this a second choice for Kang.

Holtzman indicated positive outcome from a meeting April 10 with the director of the university's housing and food services and PSH's HFS department. Holtzman confirmed that HFS at University Park is working with PSH, "trying to get aid" for students facing relocation.

Holtzman credited JoAnn Coleman, manager of PSH housing and food services, for raising some issues at the meeting that "PSH can't fix," but that HFS at University Park could help facilitate.

This aid includes helping families who do not have their own furnishings. When he met with each family, Holtzman asked them to prepare a list of needed household items. "Depending upon each family's needs," Holtzman said, "housing and food services at PSH will work with the surplus and salvage department at University Park to fulfill furniture needs." Holtzman indicated these items will be low priced.

Other possible accommodations for family tenants include a rent freeze for the ten families if they renew their leases

in Meade Heights from September to December and a refund on their \$100 housing deposit, barring any billable damage to the unit.

These concessions, Holtzman and Coleman said, would be reflected as a credit on the student's housing account, and could help families save some money for their move or absorb incidental costs, such as transfer and re-installation of phone or cable service.

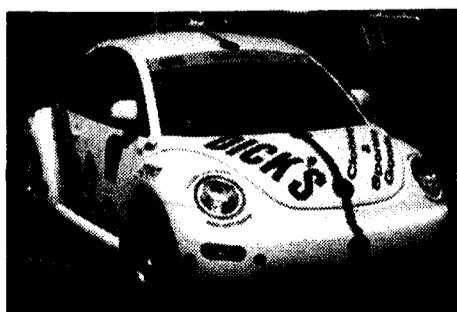
Holtzman plans to begin meeting again next week with each family to collect their furnishings list and to "agree on a plan - here's what we can do now."

In a phone interview from Florida, Dr. Madlyn Hanes, PSH dean and provost, said she was "very pleased we were able to work effectively with our colleagues - particularly in HFS - to do the best we can for students, especially those who are here and will be with us through this transition." Hanes added, "They deserve our help, and I am pleased that we can help."

"Transition," Hanes noted, "is certainly a little unsettling," but she said she feels "the response of PSH faculty and the staff in HFS really did step up to the plate." She also commended the student tenants for "helping us help them."

Hanes said she hopes that other families considering enrolling at PSH will not be discouraged by the current unavailability of on-campus housing for families. She notes, "we are better informed about the community now. Don Holtzman and Ms. Coleman had an opportunity to see what the immediate area has to offer, and we can be of help to students with families. There is affordable housing and there are good schools in the community."

While there is no indication when the family housing phase of the campus construction project will be reinitiated, Dr. Hanes said "the good news" is that "there was a formal design approved all the way though to the trustees. At least that puts us ahead of the game," Hanes said, and she added that, when the program is re-launched, "we won't be deferred."



PADUI Safety Bug does the drinking

PSH students try to drive

On April 9, a small group of students tried their best to negotiate the Olmsted lot in a car that mimics drunk driving, tires squealed and cones flew.



Photo by Cathie McCormick

Ohio University students Nedra Hurley, Luis Garcia, Steve Spence and Chris Scurlock were named the official winners of the IEEE Region 2 Robot Contest during their annual gathering hosted this year by PSH's IEEE.

IEEE Region 2 Robot Contest too close to call

By Cathie McCormick
Capital Times Editor In Chief

Between rounds, the robot builders huddled around machines they've worked months preparing for the April 7 event. Sensors, household appliance motors, remote control race car batteries and microchips programmed by laptop computers were in a variety of cases and programmed to perform the assigned task: gather small balls and move them to a designated location on the board.

The atmosphere was charged, but friendly. "It's a competition - but it's a collective effort," Chris Scurlock of Ohio University said. Three teams competed this year, Ohio and two teams from Penn State Erie. The Penn State teams consisted of students from both electrical and mechanical engineering.

Steve Moses, PSH IEEE president said the Ohio team will continue on to the national competition, but that the PSH competition was so close, the three teams will split the money.

WANT IT. DESERVE IT.

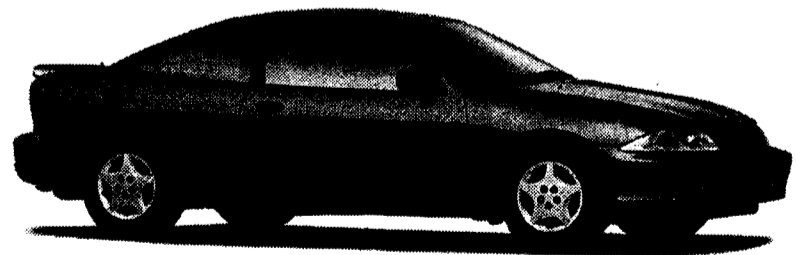
YOU GOT IT!

2001 Chevy[®] Cavalier[™]
Only \$13,645

Cash Back - \$1,250*

GMgrad Cash-Off - \$400*

Your Price \$11,995**



Finally got your degree. Getting a real job. Need a new car. Satisfy your driving ambition with the GMgrad Program.[™]

- Your choice of any new Chevrolet[®] • Quick, easy GMAC[®] financing at attractive rates[†]
 - No credit history required[†] • No down payment on purchase[†] • GMgrad cash-off incentive
- Visit GMGRAD.com or call 1-800-964-GRAD for details.



SUTLIFF CHEVROLET

13th & Paxton Streets, Harrisburg • 1-888-788-5433
Colonial Park, 5001 Jamestown Rd., Harrisburg • 1-800-580-5544

(Cash back offer expires 10-31. Must take retail delivery by 10-31.)
Available toward the purchase or lease of select 2000, 2001 or 2002 vehicles for eligible college graduates. You must either (1) be within 6 months of graduation or (2) have graduated within the past 2 years from a 2-year or 4-year college or post-graduate program. Graduate students are eligible during their entire enrollment period. Certificate program students are not eligible. Must take retail delivery from participating dealer; stock by 9/30/01 and apply to GMAC financed purchase or lease. Length of finance contract is limited. Maximum amount financed required. Monthly payment deferral not available with GMAC SmartLease or SmartBuy. Finance charges accrue from date of purchase. GMAC must approve. Not available with some other offers. Based on MSRP less \$1,250 cash back incentive and \$400 GM College Grad cash off. Tax, title, license and optional equipment extra. Not available with other offers.