

## HOW LONG DO YOU THINK IT WILL TAKE THE PESTS TO ABANDON THE SINKING SHIP "SS MEADHEIGHTS"?

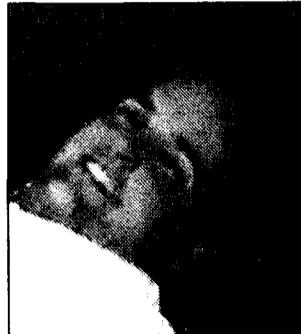
Survey and photos by Debra Glass  
Capital Times Staff Writer



**Varsha Jailal**

Computer Science

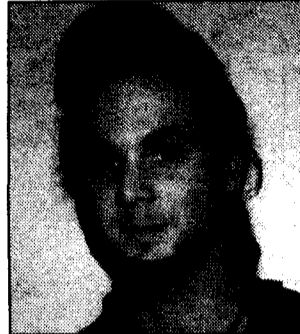
I don't think that they are going to leave, but eventually they will be squished when they tear down Meade Heights.



**Justin Gattorno**

Design Engineering Tech.

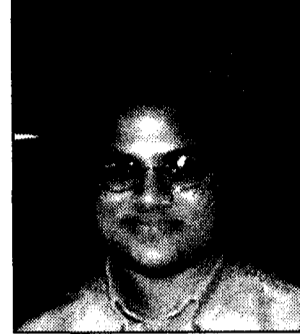
When TMI melts down.



**Peter Grandia**

Literature

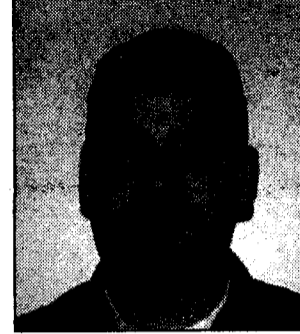
I don't think they will ever leave.



**Sandhya Prasad**

Computer Science

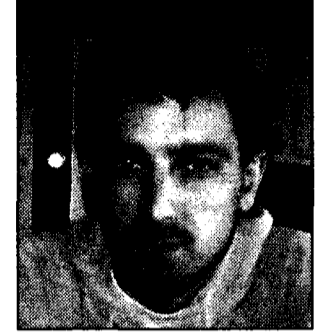
I think they'll find a way to stay, but we'll have to wait and see.



**Keith Smith**

Design & Const. Eng. Tech.

The skunks will never leave! They will just relocate to the new dorms to be a pain in the ASS there.



**Brian Parsons**

Finance

Only time should tell.

### Here Lizard, Lizard, Lizard.



## PSH seeks solution to family housing problem

Continued from Page 5

the move with withdrawing children from school, the higher cost of off-campus housing and the availability of furniture for families who did not transport personal furnishing from overseas or sold their furniture prior to moving into a furnished Meade Heights unit.

As reported in the March 19 issue of *The Capital Times*, after current family housing contracts in Meade Heights expire on Aug. 31, contracts will be renewed only from Sept. 1 to Dec. 31. After that time, on-campus housing for families will be unavailable.

Plans for construction of family housing at PSH, the second phase of student housing projects announced last year, were shelved indefinitely after contractor bids came in significantly over-budget.

Work continues on the first phase of the project, single-student dormitories, located at the east end of the Olmsted building.

Seong Ju Kang, a graduate assistant in the PSH school of public affairs and a doctoral candidate in public administration, has lived in Meade Heights with his wife and two sons since last August.

Kang attended the March 20 meeting and said he was disappointed in the way the meeting was conducted. Kang said he and other family tenants went to the meeting looking for — and offering — suggestions, but were told that the closure of Meade Heights was “a business decision” reflecting the decreasing trend among colleges to provide family housing. After the meeting, Kang said he and other students with families wondered “what [was] the meaning of that meeting? They just wanted to hear what the students are thinking” and that it only seemed like “a negotiation with discussion session.” Kang disclosed, though, that he and several other students are scheduled to meet this week with Dr. Donald Holtzman, senior director of PSH student affairs and enrollment services.

Dr. Madlyn Hanes, PSH dean and provost, reports she has been working with Holtzman on the family housing situation at PSH. In a phone interview March 29, Hanes said developments are transpiring which may portend “some very good news” for the families who need help relocating from Meade Heights. Hanes said she will be able to issue some details about the evolving situation within the coming week.

## Blood drive draws

Continued from Page 5

Challenge, a blood donation competition between local colleges and universities, sponsored by WHP-TV and the Central PA Blood Bank.

Clements believes the success of Wednesday's drive will put Penn State in third place behind Elizabethtown College and Millersville University.

Julie Howard, a professional

accountancy major, said she donated blood on Wednesday “because it helps people and I can't think of a reason not to.”

Jared Rimmer, a professional accountancy major, who donated along with Ms. Howard said, “the deciding factor was that Julie said she would hold my hand if necessary.”

Other students, like Varsha Jailal, a computer science major who was unable to meet the donor weight requirements, simply helped out in her capacity as a Lion Ambassador.



Trudy Grant prepares Jon Meyers to donate blood.

## SGA election decision

Continued from Page 5

ble for responding to Ottaviano's charges, Joe Werner, election co-chair said. Student Court Chief Justice Jason Steigerwalt said the Student Court is investigating the charges and that, “if it's true, it will be dealt with.” Steigerwalt is waiting to meet with student court advisor Dr. Janet Widoff before making a decision.

Despite the fact that the election was being actively challenged, the election steering committee met to tabulate the ballots shortly after the polls closed on Thursday and by Friday morning, the results of the election were posted at the main entrance to the Olmsted building.

The poster announced that Tramaine Harrison had been elected president,

Jason Norville vice president, Lori Mitchell, treasurer, and Danielle Shanabrough, public relations officer.

By Friday afternoon, however, rumors of ballot-counting rule violations were rampant. Sufficient evidence for confirmation was unavailable at press time. Werner admitted that the race for president had been close. Roderick Lee, president of the Graduate Student Association said he heard the difference between Boger and Harrison was only 12 votes.

Steigerwalt said, “It was really close,” but said the decision to order a recount would wait until he had discussed the matter with Widoff and the co-chairs of the election committee, Werner and SGA President Carissa Herwig.