

York County Hate Crimes

Continued from Page 1

In Pennsylvania, certain crimes are considered more serious when motivated by hatred toward race, color, religion or national origin of another individual or group of individuals. "The most disturbing pattern among those hate crimes that are reported is that the offenders are young people. Sixty-two percent of the hate crimes over a five-year period were committed by people ages 11 to 20 and they only make up thirteen percent of the population," Welliver said. Hate groups are recruiting young people, especially teenagers from unstable homes who need a sense of belonging and respect. The hate

group becomes the family the teenager needs.

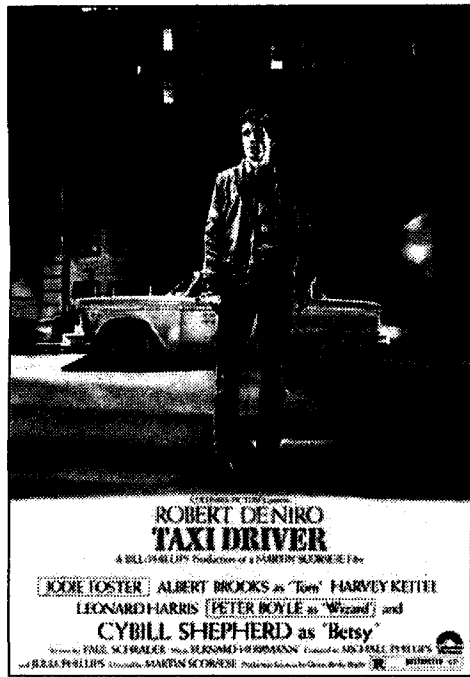
According to Welliver, the only way to end discrimination, which sometimes leads to hate crimes, is recognizing and accepting differences in our society. Witnesses of any kind of ethnic intimidation should report it to the Pennsylvania Human Relations Commission or the Inter-Agency Task Force on Civil Tension. Victims of hate crimes or ethnic intimidation, should report it to local police departments or the state police for investigation and possible prosecution.

American Studies Club Sponsors "Taxi Driver"

The PSH American Studies - Humanities Club is sponsoring the 2001 American Film Series, "Mean Streets and Cowboy Morality: Urban Anti-Heroes in the 1970s."

The first installment in the series will be Martin Scorsese's *Taxi Driver*.

The film will be shown Friday, January, 26 at 8 p.m. in the second floor auditorium of the Olmsted building. Admission is free. The movie is rated R.



SPRING CLUBFEST 2001



Campus organizations staff tables in the Gallery Lounge during Clubfest January 17.

3 WAYS TO PAY THE

RENT

1. CALL (717) 534-3405
2. GO TO THE HERSHEY THEATRE
BOX OFFICE 15 E. CARACAS AVE.,
HERSHEY • MON.-FRI. 10-5
3. ALL RIGHT, FOR 20 BUCKS
YOU GOTTA WORK A LITTLE, SEATS
IN THE ORCHESTRA PIT ARE \$20 CASH
AT THE DOOR, ON SALE 2 HOURS
BEFORE THE SHOW
(No line-up permitted before 9am day of show)

FEBRUARY 13-18

HERSHEY THEATRE

www.siteferrant.com

www.hersheytheatre.com

(Contains mature themes and strong language. Parental guidance strongly suggested. Not recommended for those under age 15)