

“What do you think of reality based TV shows like *Survivor*, *Real World*, and *Big Brother*?”

Survey and photos by Debra Glass
Capital Times Staff Writer



Heidi Puscher

Criminal Justice

I think reality based TV opens the door for removing our privacy and, personally, that disturbs me.



Mark Pauer

Accounting

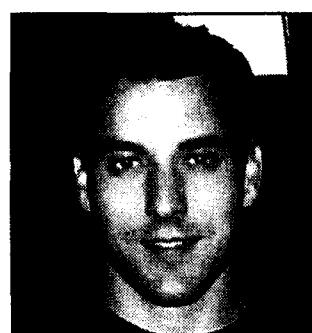
It takes up good program time slots. I could be watching *Law and Order*.



Mark Messner

Applied Behavioral Sciences

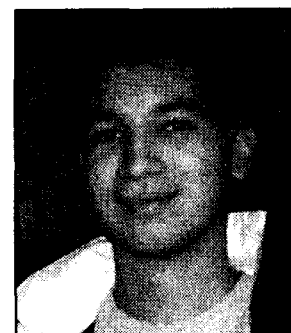
It's like looking at yourself in the mirror every day.



Matt Hartsough

Marketing

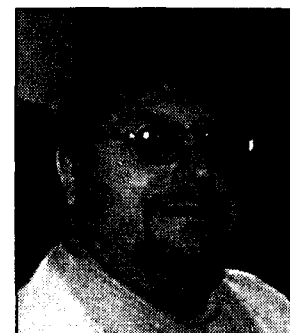
I think most people like to watch people do things they wouldn't do themselves. It's almost, "I don't want anyone to get hurt or die, but I do."



Stephen Rivera

EET

I think reality based shows are a waste of time, effort and energy because they complain about simple issues like their drinking problems and their pathetic lives.



Tony DePietro

Information Systems

I thought it was a bit contrived and designed to get you to keep watching—so I didn't watch.

Computer Hiccups Hassle PSH

Continued from Page 1

whether they are on the Internet or not," Brinkley said. He quickly stressed, though, that problems were confined to some labs and technology classrooms. The Sun computers in Olmsted, which faculty often use for research, have experienced LAN congestion.

Dial-up access problems related to the university's Intranet Service Provider have also contributed to some of the glitches. Overload on the campus dial-up access number cut some students, like Drew Ames, a communications major, off the server after only a few minutes. Other times, it completely denied them service.

Ames first had difficulty with PSH's server on Sept. 5, when he could not connect at all. "The following night," Ames said, "I could connect, but my connection was dropped after only a minute or so online. When I wasn't getting dropped, the connection was very slow."

After repeated attempts to log on with the PSH server, Ames tried a different approach. He searched the PSH homepage with America Online and sent Brinkley an e-mail describing his problem. Brinkley reassured Ames that the problem was with the campus connections, not his computer.

Ames praised Brinkley and his co-workers for their prompt attention to his concerns. "I think Mr. Brinkley and his staff have done a great job not only fixing the problem, but also keeping me informed while they were doing it. I've

received a total of 10 e-mail messages from Mr. Brinkley that . . . were updates on his progress."

IIT's first step to meet this cyber-challenge was to contact Adelpia, the service provider for computers within the PSH system. "Adelpia has been having problems with their database, causing some of our dial-up modem users to be cut off or not to be able to get in at all," said Brinkley.

He explained that, in the past, a lack of modems caused the service slowdown. But there are now 141 modems available for the access number. Adelpia is still updating its database to include the numbers of callers who, at one time, could not get through. Brinkley said the problems with Adelpia are "95 percent solved, although we still get a complaint once in a while." When complaints arise, the IIT staff addresses them immediately.

To tackle the Internet-related concerns, the PSH Office of Telecommunications has already installed more advanced hardware. This has solved these problems for now. But as the Internet continues to expand, Brinkley said PSH could experience similar difficulties in the future.

PSH has also used other measures to alleviate Internet congestion. First, services on Telecom2, the campus's Internet router, have been redistributed to try to lighten the traffic load. The campus Internet server, PSC, has also changed its data center to ease congestion on a link

that had carried the university's commodity Internet and Internet II (Abilene) traffic.

"The commodity Internet is the Internet that we use every day for course Web pages, e-mail and our grades. Internet II is for research and, soon, for video conferencing," Brinkley said.

As far as the LAN troubles are concerned, the IIT staff has already started a three-phase plan to resolve them. The first part went into effect Sept. 27. It involved the design of a switch that will prevent congestion in technology classrooms. The actual installation, which will take place in about eight weeks, will affect more than 70 classrooms in Olmsted and the Science and Technology Building.

The second part of the plan, which will be complete by next August, will install the switch in the general purpose computer labs. The final phase should be finished by August 2002. This will affect program specific facilities and offices.

Until the problems are resolved, Brinkley said all users should continue to work as they normally would. "If there are problems," he added, "we have staff on duty in the computer lab, W305 Olmsted, and they should be told about them. With technology-enhanced classrooms, improvements will be noted in eight weeks or less."

Grace

Continued from Page 1

(3) Develop tactics that allow you to become more effective at motivation and interaction.

"Grace Under Fire" taught me a lot about myself. I encourage you to keep your eyes peeled for future workshops like this one. Getting an education is more than just learning facts, it's about establishing the skills necessary for the professional work environment. For further details about the ICP, visit www.culturalpartnerships.org.

Correction and Apology

Two inductees, Nancy Avolese and Susan Meehan, were inadvertently omitted from the list of new Alpha Sigma Lambda members in the Sept. 23 issue of *The Capital Times*. Please accept our apologies and congratulations on your accomplishments!

Capital Times Policies

The Capital Times is published by the students of Penn State Harrisburg. Viewpoints are solely those of the authors and are not representative of the college administration, faculty or student body. Concerns regarding the content of any issue should be directed to the editor.

The Capital Times
Penn State Harrisburg Campus
W341 Olmsted Building
777 W. Harrisburg Pike
Middletown, PA 17057
1 (717) 948-6440 - captimes@psu.edu