

Huge Workloads

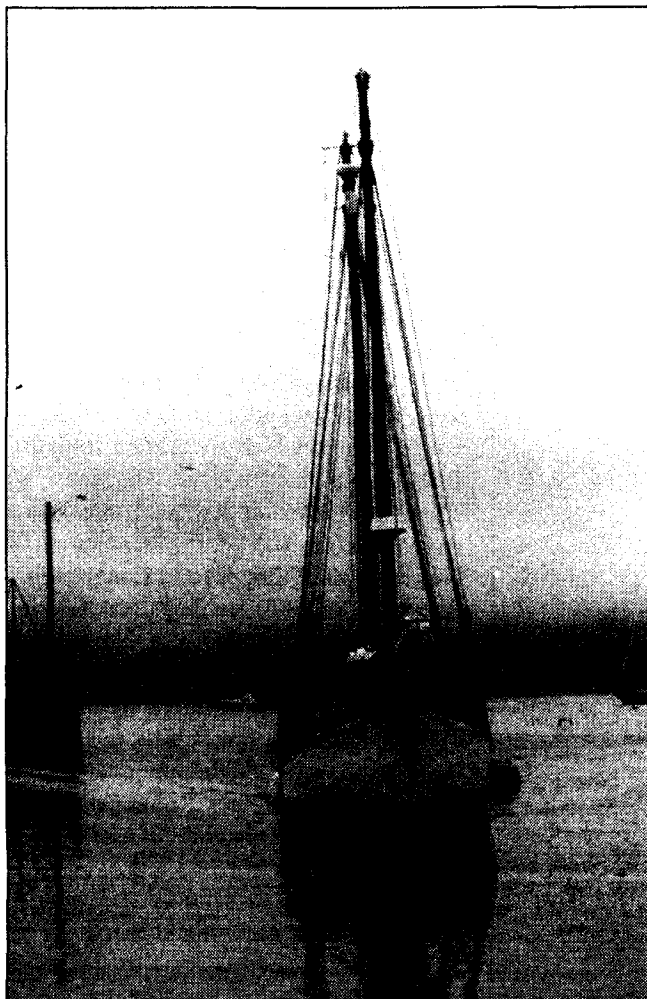
Continued from Page 6

whales spyhopping, lobbing, breaching and fluking, the day's heavy rain and high winds blew the sea swells higher than usual. Many of us were seasick and we were all soaking wet, so we agreed it was time to head for shore.

The next day, we went whale watching aboard the *Sea View*, a comfortable 40-foot vessel with a protective canopy. We again saw seals, porpoises and a few whales. What made this excursion exceptional was the crew's scuba diver, Jen, and her underwater camera. We were able to watch Jen on a video monitor as she pointed out assorted species of marine life on the ocean floor. She gently filled a mesh bag with sea crabs, urchins, starfish, cucumbers and scallops. On deck, we examined the specimens Jen retrieved in a tub of water for a few minutes before we returned them to the sea.

Our final day of whale watching produced fabulous results. We were aboard a large schooner and the sky was bright as we headed for the colder, rougher seas the whales frequent. The day was a photographer's dream. For several minutes, there were finback whales everywhere. It seemed like groups of whales were performing a choreographed show for us — spouting and diving all around the sailboat — before we headed back to shore.

A lecture we attended along the wharf highlighted the importance of protecting the area's natural resources. A 13th-gener-



Students ventured into the Bay of Fundy hoping to spot whales and other marine life.

ation Passamaguoddy Indian presented the lecture and explained how the native

fisherman have provided for their families from the island's assets for many years. But as the economic climate and local politics of the island have changed, so have the fisheries and the fishing industry. One of the island's economic mainstays continues to be the herring caught in nets at sea and in weirs along the shoreline. (Weirs are wooden poles driven into the sea floor and hung with nets to trap schools of fish swimming along the shoreline.) Lobsters are one of the bay's most prevalent catches, but pollock, haddock, halibut, clams, scallops and periwinkles are important to the local fishing industry as well. Floating pens used by commercial fisherman to raise salmon fingerlings for the restaurant market were recently introduced around Grand Manan.

Our class's last excursion was the sunset sea-kayaking around the northern end of the island. We got a final, closer look at the fishing weirs, salmon pens, geological formations, bald eagles and other sea

birds of the island. The week was over too quickly. It was time to head home and to the confines of indoor classrooms. Our stay on the island ended as it had begun, with an afternoon briefing by the lighthouse, followed by a delicious lobster dinner.

I highly recommend this course and other travel opportunities as a creative way to compliment your Penn State education. Mike Bernarsky has previously taught courses for Penn State Harrisburg on Appalachian and Pocono Mountain ecology, the alpine ecosystems of Glacier National Park, the coastal estuary of the Chesapeake Bay, and the coral reefs of Bermuda. I think Mike Bernarsky is a fantastic instructor; look for his courses under EDU460.



Finwhales surfacing for air.

Career Services

Continued from Page 1

and Behrend campuses. To visit the site, students can go to www.career.sa.psu.edu and enter their personal student number in the "User ID" field. The default password is "password." Once in, students can view jobs, companies and coming events.

Each week between Friday at 8 a.m. through Tuesday at 8 a.m., the CMS on-campus recruiting calendar shows which employers will be coming to campus in four weeks. For a \$10 fee, students can post their resume and request interviews. However, the system is unforgiving — students who miss the Tuesday deadline cannot request an interview with those recruiters. To register for this service, go to "My Job Search" on the Career Management System site and click "Self-Registration."

The PSH-specific College Central Network is a free service offering information about employers and job availabilities that have been submitted directly to the Harrisburg campus. The site, which replaces the old TeSS system, has links to dozens of employers, local and national

job-search engines, and resume and cover letter tips. This site can be found at www.hbg.psu.edu/careers. Click on "Employment Opportunities - CCN" and follow the instructions. When prompted to enter the school name, type "Penn State Harrisburg."

According to Karl Martz, career services coordinator, "At no other time in your career are you going to have such easy access to employers and employment opportunities."

Martz stresses the importance of utilizing all of the resources available through Career Services, such as the 48-hour resume critique, workshops, and internship fairs and events. The Career Services Library has several helpful guides including some on salary surveys. The office, located in Olmsted W117, is open Monday through Thursday, 8 a.m. to 8 p.m., and Friday from 8 a.m. to 5 p.m. For more information visit the Career Services web site at www.hbg.psu.edu/careers, or call (717) 948-6260.

WANTED Research Volunteers

People with mild to moderate asthma are wanted to participate in a clinical research study using an investigational (FDA unapproved drug) inhaled steroid.

Eligibility or Requirements

Age: 12 - 50, male or female, healthy, non-smoking, non-pregnant, using Flovent, Beclovent, Vanceryl, AeroBid, Azmacort or Pulmicort.
Four visits over six weeks.

Compensation

Study medication and pulmonary function tests will be provided at no charge. Compensation will also be provided for visits and participation.

Study Director

Dr. Timothy J. Craig

For More Information Call:

Cathy Mende, RN
Section of Pulmonary,
Allergy, Critical Care
Milton S. Hershey
Medical Center
531-4513

This research study has been approved by the Institutional Review Board, under FDA regulations, at Penn State, The Milton S. Hershey Medical Center.

PSH
Library
Journal
"Tarnhelm"
Thurs., Sept. 28
5 - 6:30 p.m.