

Professor Profile: Dr. John Patterson

by Vicki Koon

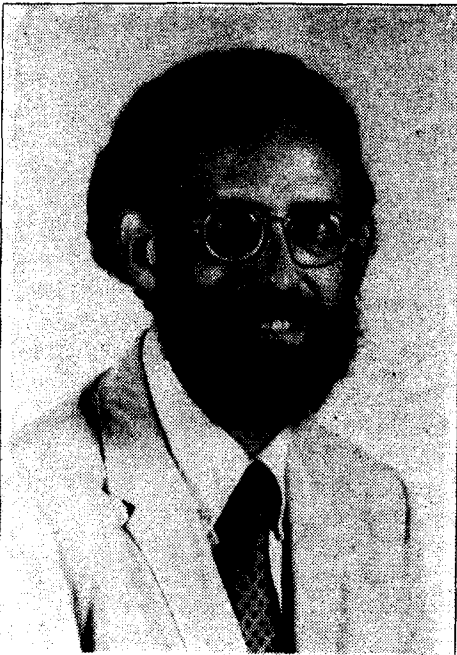
"American Studies isn't just history," said American Studies Professor John Patterson in a recent interview. "I really see it as an interdisciplinary field."

Using Gettysburg as an example, he enumerated. "You can look at the relationship between popular culture within the culture, and people's informal memories. There is folklore, and one could probably write a chapter on Gettysburg folklore. Also, there has been a lot of importance attached to Gettysburg over the years. But it has changed, we don't see it the same way as people did 100 years ago. The meanings that we take away from it are quite different now."

"I think to be able to see that is to be able to see American Studies in action, and you can see it in a lot of ways. There are a whole lot of disciplines - ranging from planning, to parks and recreation, to ancient studies, to public policy, to literature, history, art, and music - that converge. That is what I think American Studies ought to be. It can't be all those things always, but I like to find places to see them come together."

Patterson, a soft-spoken professor in the Humanities Division, received his master's degree in Folklore and his doctorate degree in American Studies at Brown University. "The

American Studies program which I went through was basically history and



literature. So American Studies has really developed as a field of study since I went to school."

As an American Studies professor, Patterson likes to look at moments in history from a multitude of angles. Different opinions and points of reference give one a fuller view of events. Some of Patterson's favorite interests are popular culture, the emergence of consumerism, and the

boundaries between mass culture and traditions. Gettysburg, another favorite interest of his, is also Patterson's main topic of research.

When Patterson isn't teaching, researching, or relaxing with his family, he can be found on public radio station WITF. He is the host of Stacked Chords, a program that airs 8:00 to 10:00 p.m. on Saturday. Patterson plays songs from an extensive collection of folk music, many times arranging the evening's program around a certain theme. He enjoys doing the program as much as he enjoys the feedback he receives in letters from listeners.

This spring, Patterson will be teaching two courses. In The Civil War and Reconstruction the causes of the war as well as some of its lingering effects will be examined. In Twentieth Century American History key events will be looked at as pivotal points in our history.

Registration Lines a Continuing Problem

By Bernie Mixon

Many questions have been raised concerning the efficiency of the registration procedure occurring the two

days prior to the beginning of classes this semester.

Dorothy Guy, registrar, addressed the question in detail recently. Approximately 600 juniors were admitted to Capital College for the 1987 fall semester. Of these 600, only 250 were admitted and accepted by June 15. These 250 students were eligible to register in advance. The remaining 350 students who were accepted after June 15 were not sent instructions for pre-registration.

The long lines for registration were caused by two main factors: the large number of students that were unable to preregister because they hadn't been accepted by June 15th, and the Electrical Engineering Technology students who were unable to preregister. Plus there were some returning students who did not take advantage of the opportunity to preregister sometime between March and mid-August.

While one might suggest that added computer personnel would help alleviate the problem, Guy feels that they would not have the expertise and knowledge needed to answer student's specific questions.

In order to avoid a replay of August 24th, Guy suggests that students preregister. Pre-Registration begins November 2nd and runs through December 11th. It is open only to degree students. All enrolled students should receive the Spring Schedule of classes in the mail by October 23rd. Copies will also be available in the registrar's office.

Final Examination Schedule						
TIME	Mon. 12/14	Tues. 12/15	WED. 12/16	Thur. 12/17	Fri. 12/18	SAT. 12/19
8:00am-10am	2	3	13	common/conflict	5	common/conflict
11:00am-1:30pm	common/conflict	11	4	6	1	common/conflict
2:00pm-4:30pm	12	7	8	14	9/15	
5:00pm-7:30 pm	16,17MW, 16A, 17A M	16,17 TTH 16A, 17A TU	16A, 17A W	16A, 17A,TH	10	
8:00pm-10:30pm	20,21 MW 18A, 19A M	18, 19 TTH 18A, 19A TU	18, 19 MW 18A, 19A W	20,21 TTH 18A, 19A TH		

Schedule of Periods						
MWF (Day)		TTH (Day)		MW/TTH (Evening)		Saturday Only
Per	Time	Per	Time	Per	Time	Per Time
1	8--8:50am	11	8:00 - 9:15am	16	6:00 - 7:15pm	22 9:00-11:30am
2	9--9:50am	12	9:30-10:45am	16A	6:00--8:30pm	23 11:00--1:30pm
3	10-10:50am	13	11:00-12:15pm	17	6:30--7:45pm	24 12:00--2:30pm
4	11-11:50am	Break	12:15- 2:00pm	17A	6:30--9:00pm	
5	12-12:50pm	14	2:00-3:15pm	18A	7:00-9:30pm	
6	1-1:50pm	15	3:30-4:45pm	18	7:25-8:40pm	
7	2-2:50pm			19A	7:30-10pm	
8	3-3:50pm			19	7:55-9:10pm	
9	4-4:50pm			20	8:05-9:20pm	
10	5-5:50			21	8:45-10pm	