

How high will tuition go?

BOSTON (CPS) - By the time the babies born this year get to college, they may have to pay \$45,000 to \$180,000 for their degrees and face a huge post-graduate debt, according to a recent accounting firm study.

"We've witnessed an increase of more than 330 percent in tuition and required fees over the past 15 years in the public sector alone," says Clark Bernard, chair of higher education planning for Coopers and Lybrand, which conducted the college costs study for the American Association of State Colleges and Universities (AASCU).

If such rapid tuition increases continue through the turn of the century, as many financial experts expect, "families who have a child this year will probably have to spend \$45,000 for a public college education in 18 years," Bernard says.

The cost of sending a child to a private college, moreover, will run from \$140,000 to \$180,000, the study predicts.

"The implications (of the study) are extremely serious," says Allan Ostar, AASCU president.

"We may well be creating a debtor class of students" by charging so much for tuition

that students will spend decades paying back their education loans, he says.

Currently, the cost of attending a public college averages \$15,000, Bernard says, while four years at a private institution runs about \$37,000.

A recent University of Wisconsin study, Ostar says, shows that today's average college student already has a debt of \$8200 upon graduation.

Compounding high tuition rates is the federal student aid programs' shift from giving students money through grants to a greater dependence on loan programs.

Two decades ago, Ostar recounts, about 70 percent of all federal student aid was in the form of grants and other awards. Today, 70 percent of all aid money is in loans which students must repay after graduating.

If tuition rates continue to soar and the balance between grants and loans remains lopsided, he warns, "a student's ability to purchase consumer goods, a car, clothes -- just the things it takes to get started in life -- will be seriously im-

paired."

And future college students facing such momentous debts

"may well be influenced in what kind of career they go into based on how well it will help

them repay their loans, rather than choosing the field they really want to go into."

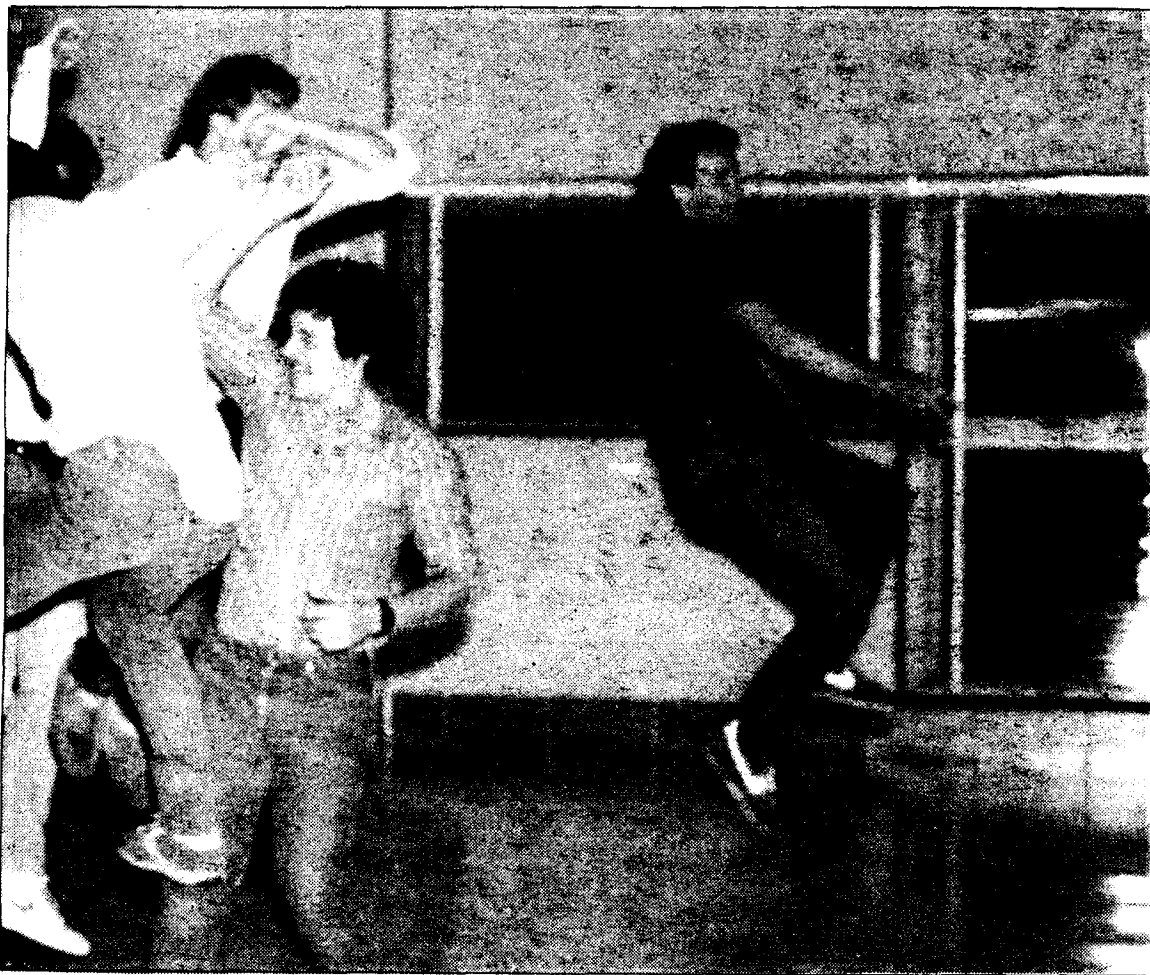


Photo by Lisa Mauss

The Student Center - and this student - jumped with excitement last Friday during S.U.B.O.G.'s Air Guitar Contest.

MID-TOWN PIZZA

Call for delivery prices
944-2195

Mid-town Plaza 450 E. Main St., Middletown, Pa.



PIZZA

	MEDIUM	LARGE	SICILIAN
Plain	\$4.25	4.75	7.00
Onions	4.75	5.50	8.00
Extra Cheese	5.25	5.75	8.25
Pepperoni	5.25	5.75	8.25
Sausage	5.25	5.75	8.25
Mushrooms	5.25	5.75	8.25
Green Peppers	5.25	5.75	8.25
Meatballs	5.25	5.75	8.25
Anchovies	5.25	5.75	8.25
Cheese Supreme	6.00	7.00	9.50
Special	7.75	8.75	11.25
Canadian Bacon	5.25	5.75	8.25
Black Olives	5.25	5.75	8.25
Ground Beef	5.25	5.75	8.25

Each extra item on whole Pizzas...\$1.00

HOT SUBS

	Small	Large
Steak	2.40	3.40
Steak w/Cheese	2.65	3.65
Meatball	2.40	3.40
Meatball w/Cheese	2.65	3.65
Sausage	2.40	3.40
Sausage Cheese	2.65	3.65
Stromboli	3.25	4.25
Sausage Roll	1.70	
Beef Bar-B-Q	1.15	

COLD SUBS

	Small	Large
Regular Italian	2.40	3.40
Ham and Cheese	2.40	3.40
Capicola and Cheese	2.40	3.40
Salami and Cheese	2.40	3.40
Turkey	2.40	3.40
Turkey Chese	2.40	3.40
Tuna	2.60	3.60
Chicken	2.60	3.60
Cheese	2.40	3.40
Roast Beef	2.65	3.65
Roast Beef and Cheese	2.65	3.65
Ham, Turkey and Cheese	2.40	3.40

SALADS

All You Can Eat.....	1.99
Large.....	1.99
Small.....	1.29
Chef Salad.....	2.25
Sm. Chef Salad.....	1.50

DINNERS

Lasagna - Stuffed Shells	
Manicotti - Ravioli.....	3.50
Spaghetti w/Sauce.....	3.00
Spaghettl w/Meatballs.....	3.50
Spaghetti w/Sausage.....	3.75
EXTRA:	
Mushrooms, Green Peppers..	0.75

PLATTERS

Meatball.....	2.70
Sausage.....	2.90
Meatball & Sausage.....	3.25
Green Pepper & Mushroom.....	3.00
Meatball, Sausage, Green Pepper & Mushroom.....	3.75

Hours: Monday thru Wednesday -- 11-12
Thursday thru Saturday -- 11-1 a.m.
Sunday -- 11:30-9

10% DISCOUNT ON ALL FOOD WITH PENN STATE ID