

Moving

Students prepare to go "homeward"

By Barb Myers
and Monica Auld

As the academic year draws to a close, students are faced with the task of moving their possessions. Whether its across town or across country, getting household belongings moved is trying at best, a nightmare at worst.

Moving even a modest household is a lot of work. But with willing friends, early planning, good packing and reasonable scheduling, the job can go quickly and smoothly. Here's a step-by-step approach.

START EARLY. Once you know you're going to move, call the equipment rental companies for preliminary information. Look in the Yellow Pages under "Trailer Renting & Leasing" or "Truck Renting & Leasing." You may not know the exact size of truck or trailer to get, but you will get an idea of availability and what credit or cash you'll need.

According to Hank Willard, Operations Manager at U-Haul, "The amount of material you haul determines your moving needs, but generally a student's vehicle won't be able to transport everything in one trip."

For moves in the busy season, which starts this month and goes through Labor Day, you'll want to reserve the equipment as soon as possible.

If you have some flexibility in

when you can move, try to schedule for midweek because most people move on the weekends. For the same reason, try to plan your move for the middle of the month rather than at the end.

ESTIMATE YOUR LOAD. If you are renting a trailer, check with the firm to be sure your car can pull it without damage to the transmission.

"It's probably more economical to pull a trailer behind a car," says Willard, "but some of to-

Moving even a modest household is a lot of work. But with willing friends, early planning, good packing and reasonable scheduling, the job can go smoothly.

day's compacts can't pull a trailer."

If you have any additional doubts, asks a knowledgeable dealer who sells your make of car. You can have a trailer hitch installed at many equipment rental agencies for an additional fee.

FIGURE YOUR COST Charges are calculated on the distance and the time you have the vehicle. If you exceed the allowed amounts for either, you'll be charged more.

Operations managers at U-Haul, Jartran, and Ryder say they have a large number of main campus students using their rentals and would welcome Capitol students as well.

John Farner, Operations Manager at Ryder, said while they rent only trucks, they "make every effort to find the cheapest way to transport students' possessions."

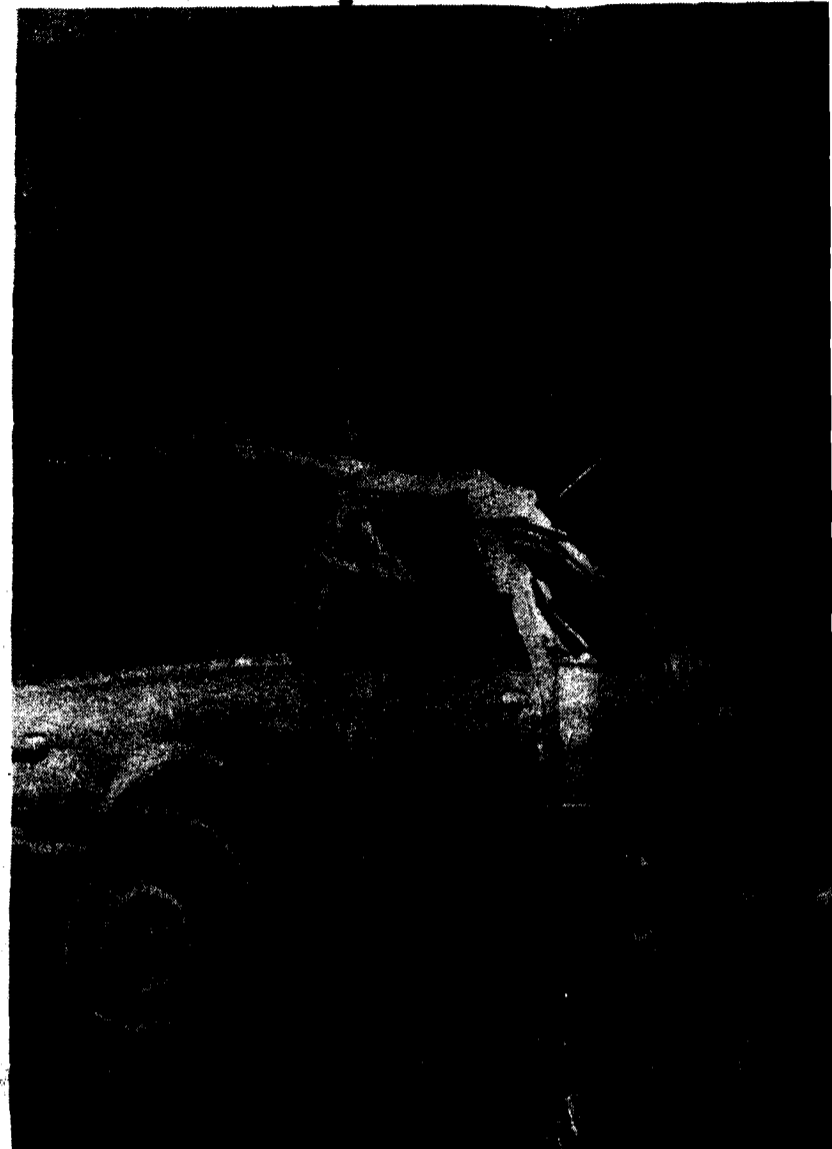
They give a 10 percent discount to students and accept personal checks with a driver's license and accept all major credit cards.

Farner stressed that one of the advantages to renting a truck is the cost factor. "It is more economical because it can be done in one trip, and the vehicle can be dropped off at a destination point."

ON THE ROAD. Driving a truck or towing a trailer is more tiring than you might imagine. Be sure to plan your rest stops adequately and keep in mind the trip is likely to take you 10 to 20 percent longer than if you were simply driving a car. You'll burn more gas than you might expect, so watch the gauge and start looking for a place to fill up while you still have adequate reserve in the tank.

"Our vehicles must have a full tank of gas when they are returned," reminds Ryder's Operations Manager, "because we fill it when you drive away from our lot."

Whether you are towing a



trailer or driving a truck, keep in mind it will take a lot longer to accelerate past a slower vehicle and a lot longer to stop. Safety should always be a priority when moving.

While moving is a lot of fun, these students know that you can't get a fistful of money—50 percent under what a professional mover would charge.

